

Children walker tricycle plan

On this page you can find a plan that you can use for making a Children walker tricycle.

Dimensions of the completed Children walker tricycle according to our plan are as follows: 266,5mm (10 ½ in) x 502mm (19 25/32 in) x 405mm (15 31/32 in).



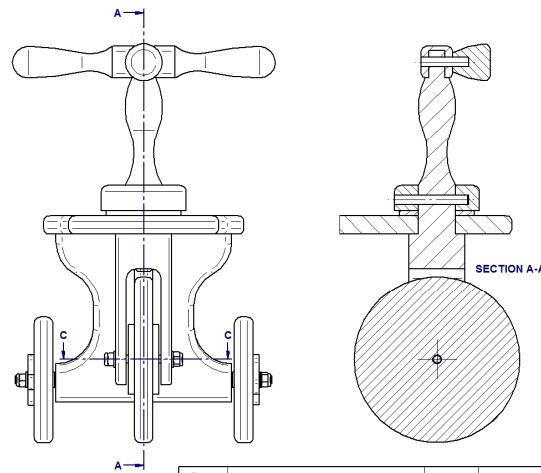
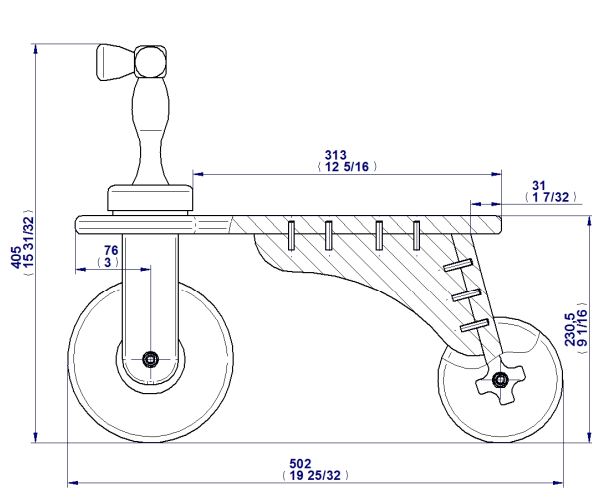
A children's tricycle is a quality toy for toddlers who have recently learned to walk. It will provide countless hours of fun during which the children will develop their physical skills and sense of balance.

If the child is too small, i. e. can not touch the ground with their feet, wait for a few months until they have grown and reached sufficient height to play with this toy. With very small children, you should initially take care of them while on the tricycle and assist them until they learn to ride on their own. The stem is connected to the front wheels and can be turned. Since this is a walker tricycle, it has no pedals and the child has to set it in motion by using his/her feet. Although there is no backrest in our plan, you can easily create one and attach it to the seat with dowels or screws if you like.

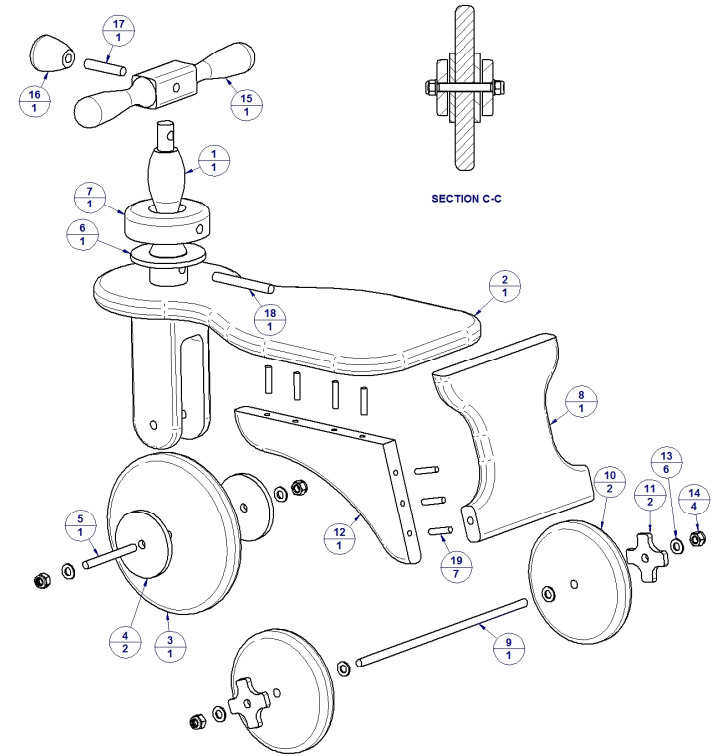
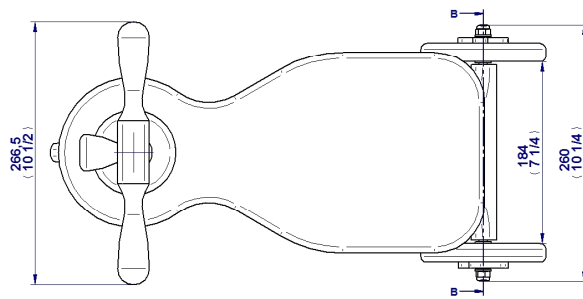
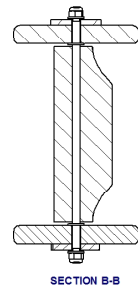
If the child plays with the tricycle inside the house, wrap some rubber band around the wheels to avoid damaging the floor. You can choose some eye-catching, bright colors to paint the tricycle, so the child will like it even more. Use only colors labelled as child-safe.

To make a strong and long-lasting tricycle, we recommend that you use hardwood for its production.

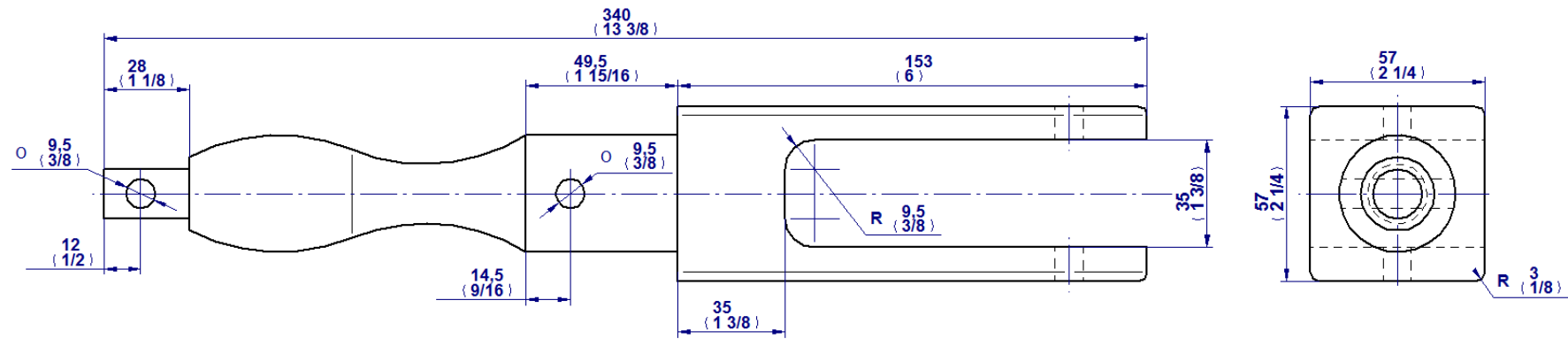
Children walker tricycle plan – Assembly drawing, exploded view and parts list



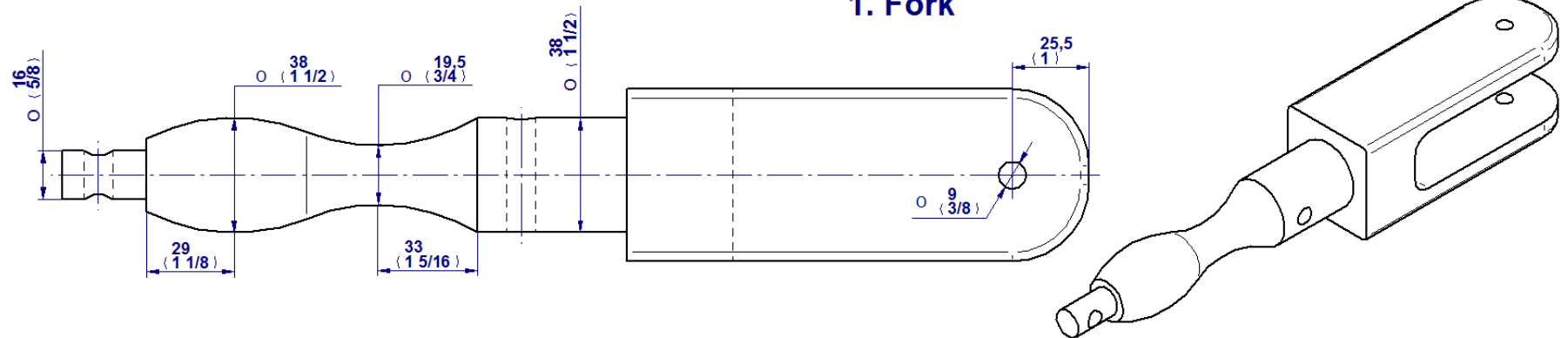
Item Number	Title	Quantity	Material
1	Fork	1	Wood
2	Seat	1	Wood
3	Front wheel	1	Wood
4	Front spacer	2	Wood
5	Front threaded axle	1	Steel
6	Big washer	1	Copper or aluminum
7	Collar	1	Wood
8	Rear support	1	Wood
9	Rear threaded axle	1	Steel
10	Rear wheel	2	Wood
11	Rear spacer	2	Wood
12	Seat support	1	Wood
13	Washer D8mm	6	Steel
14	Prevailing torque type hexagon nuts	4	Steel
15	Stem	1	Wood
16	Front light	1	Wood
17	Dowel D9,5 x 48mm	1	Wood
18	Dowel D9,5 x 74mm	1	Wood
19	Dowel D6 x 28mm	7	Wood

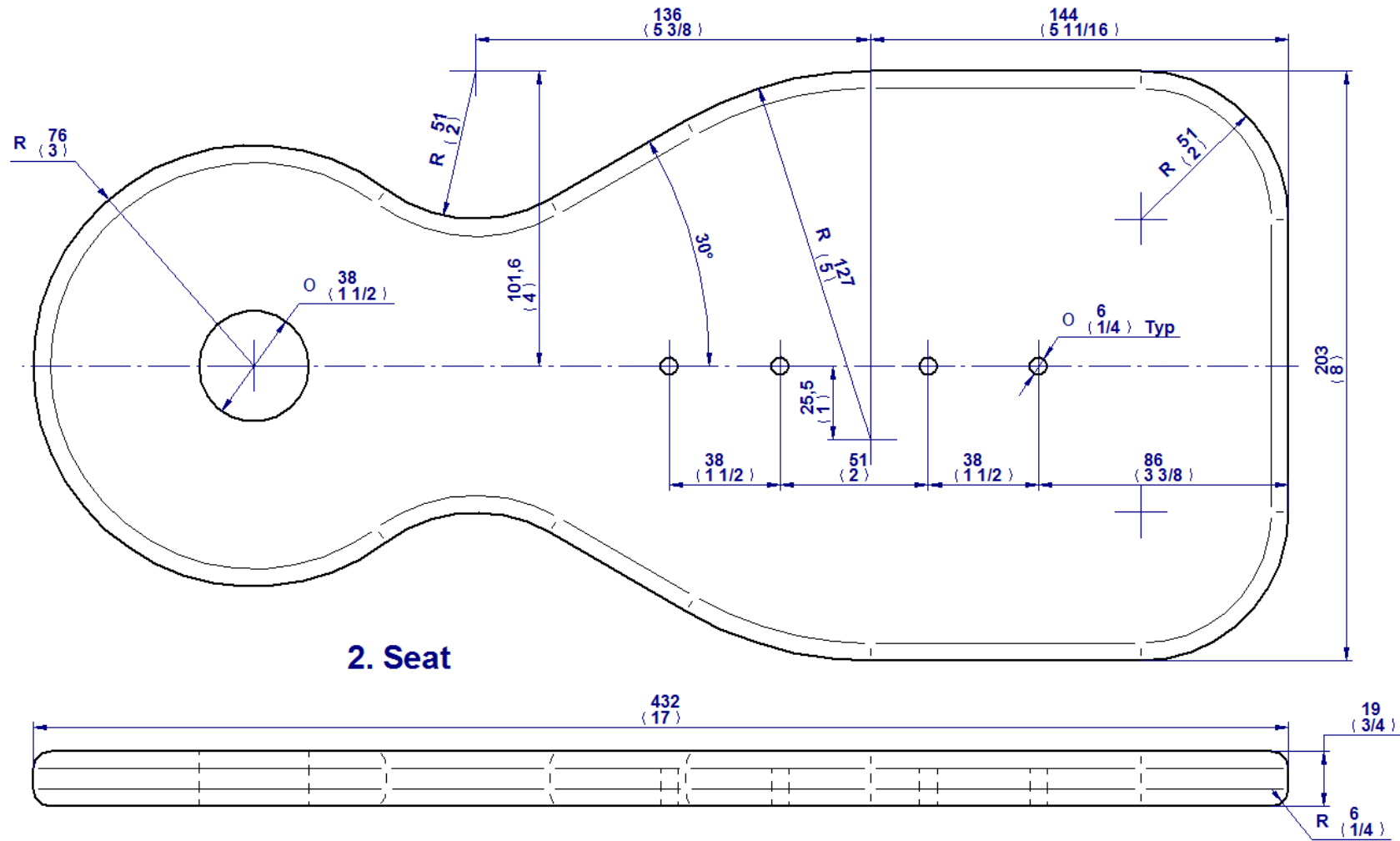


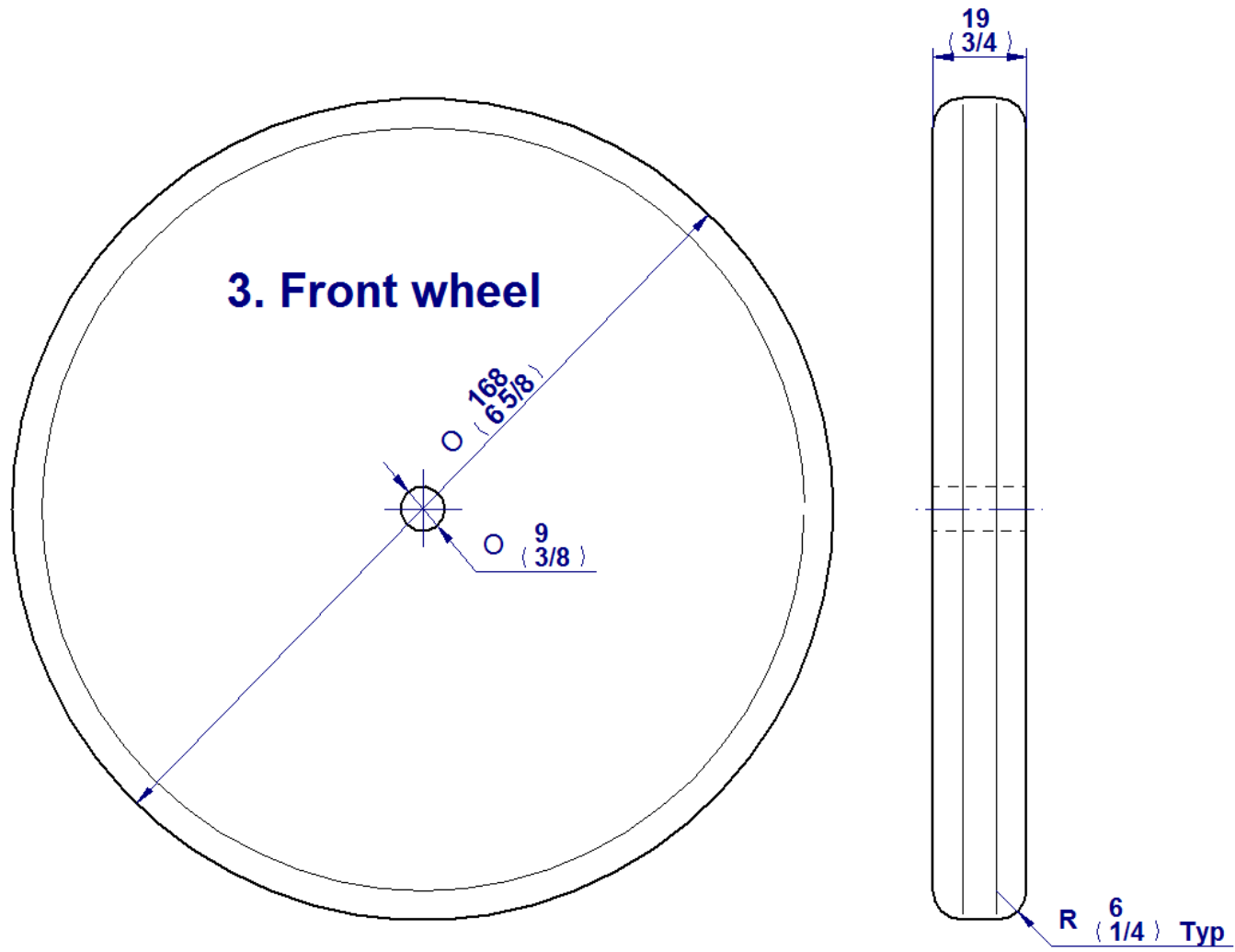
Children walker tricycle plan – Parts drawings

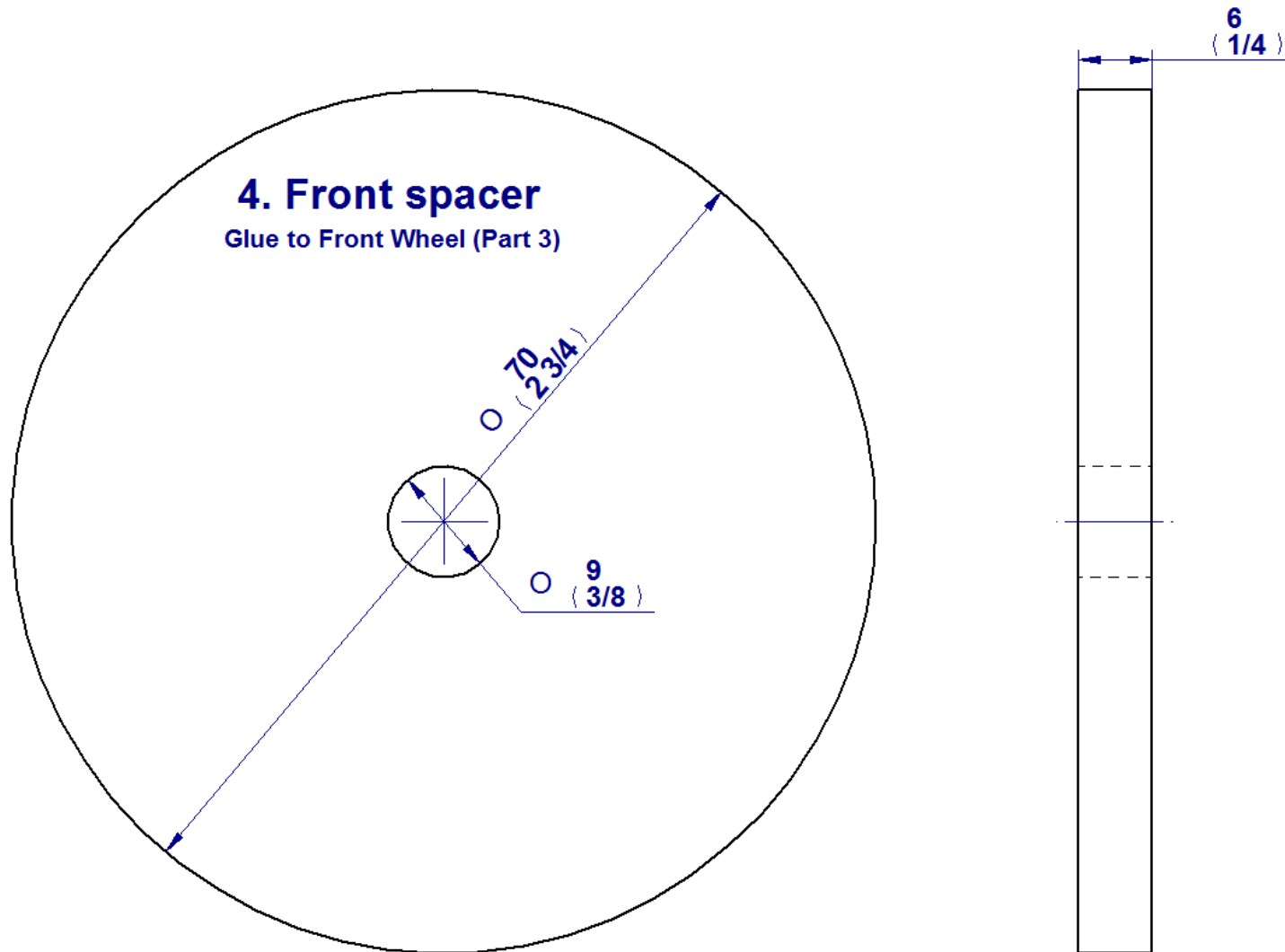


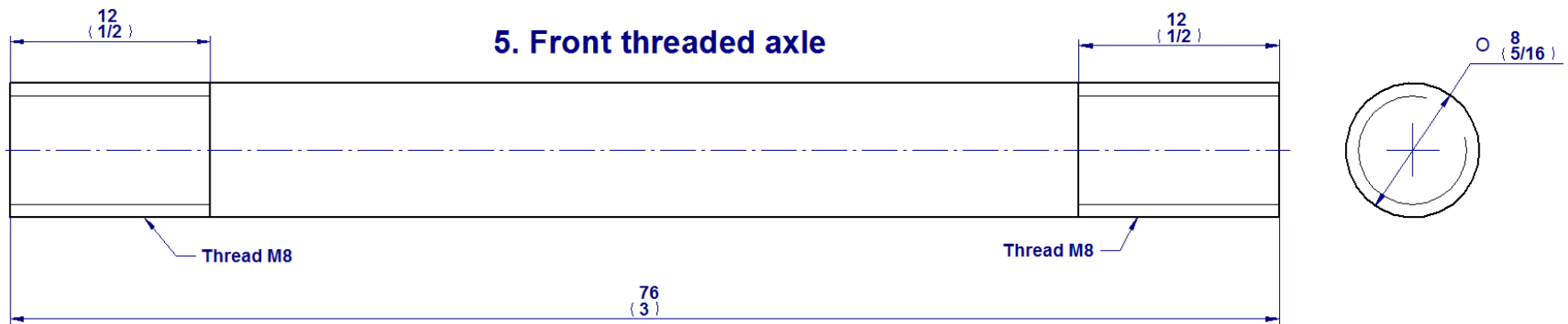
1. Fork



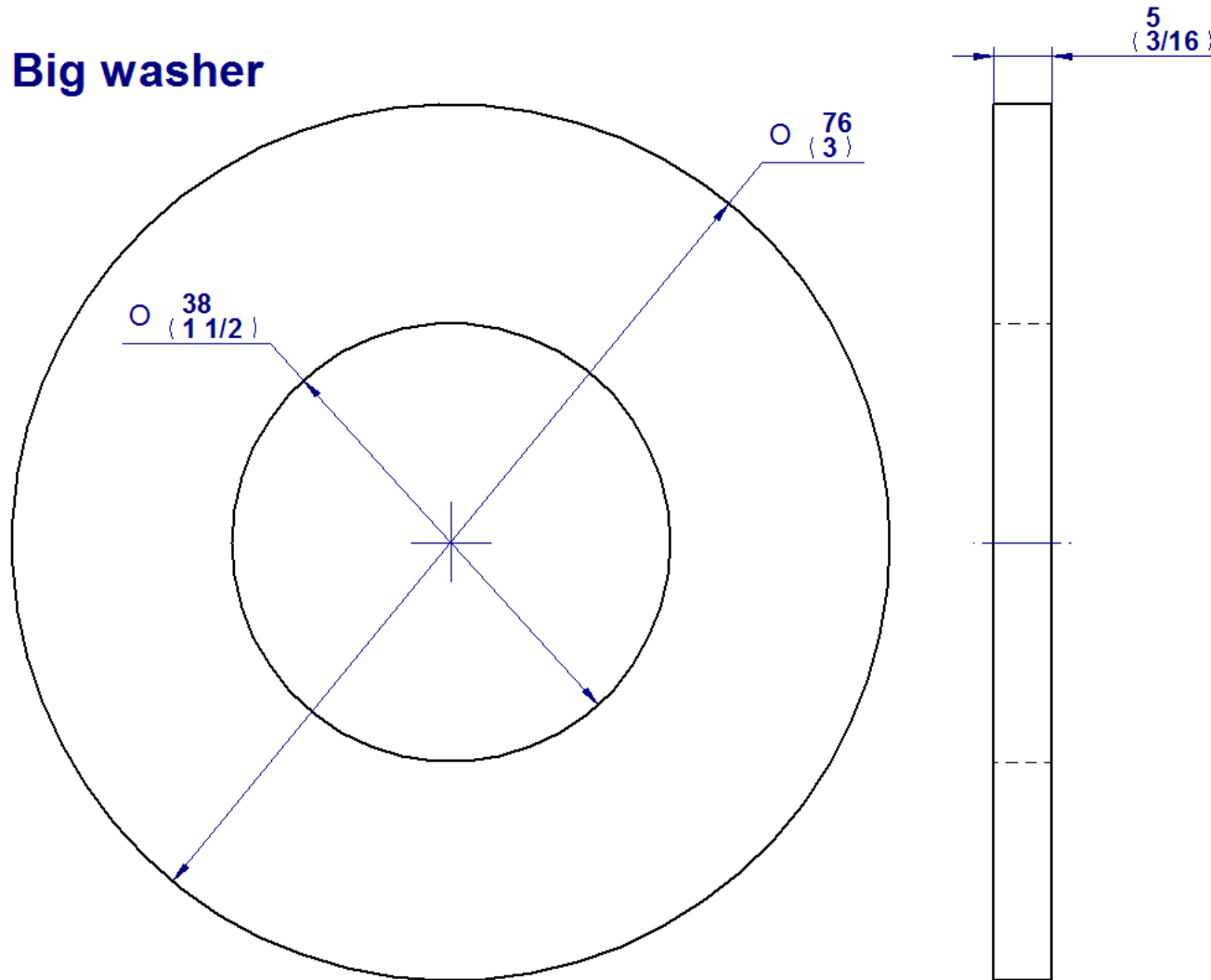




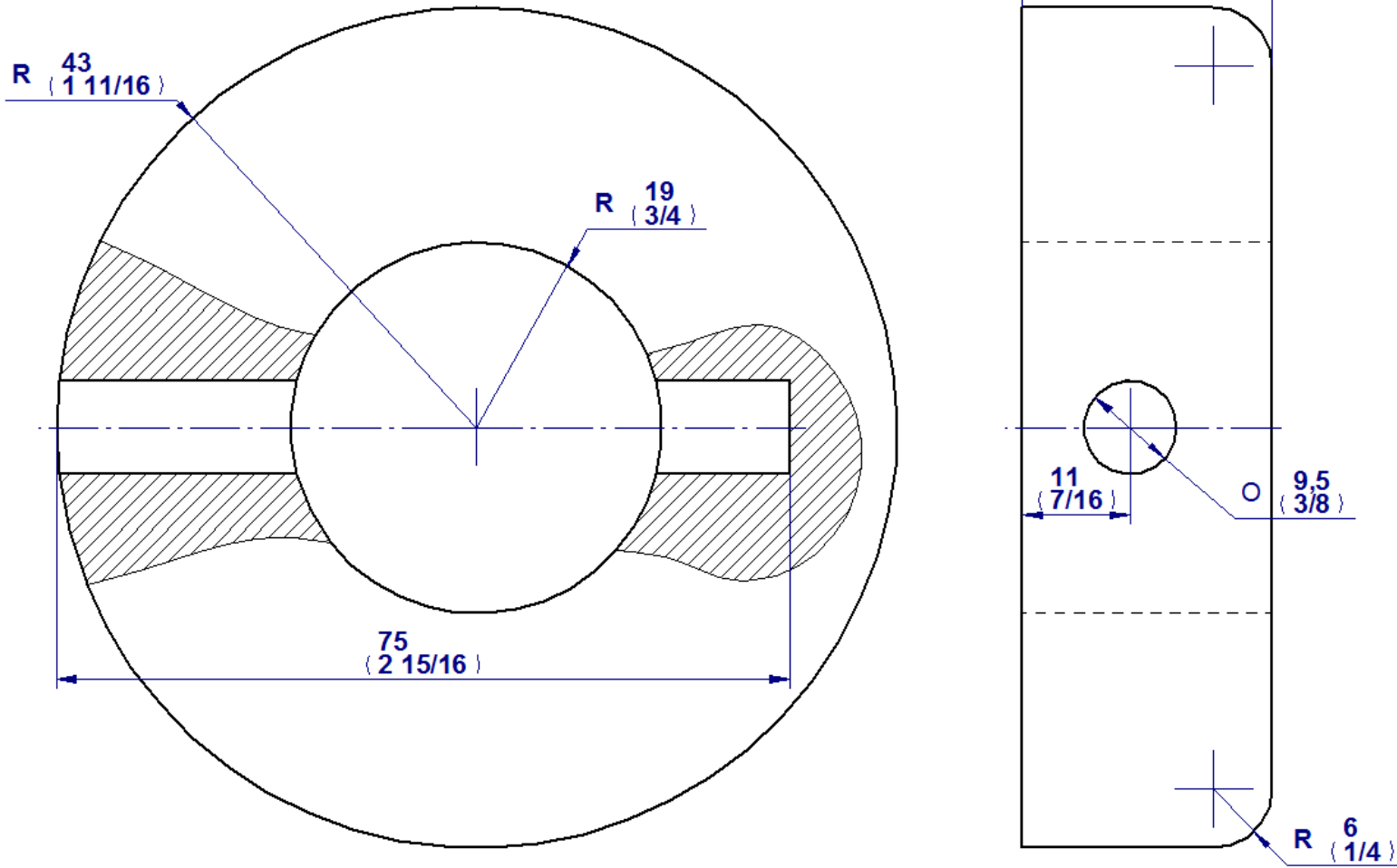


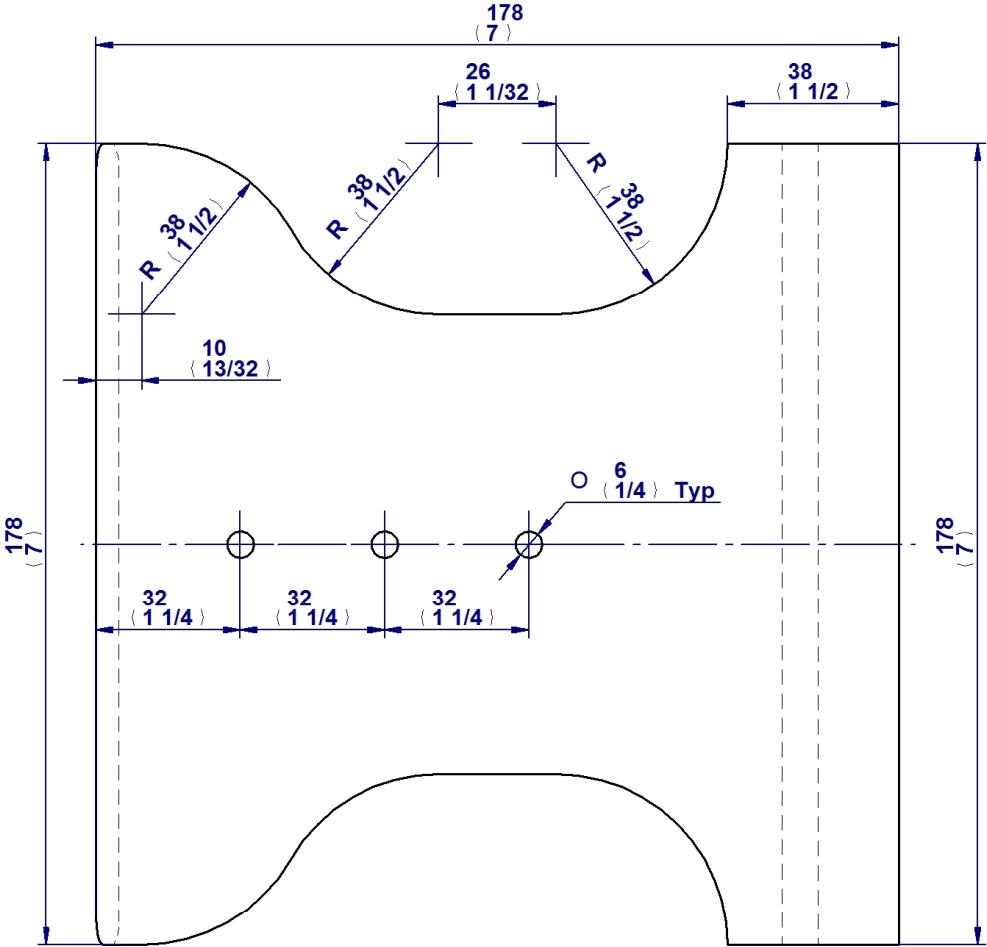


6. Big washer

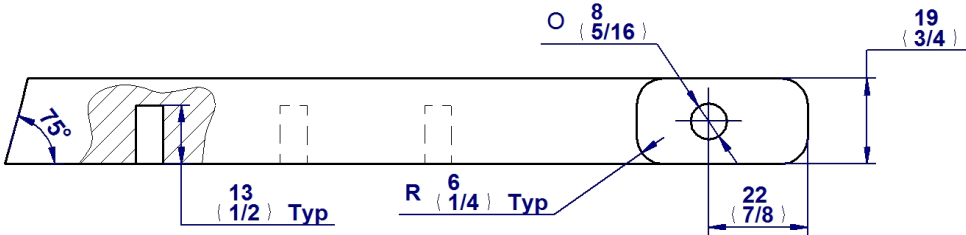
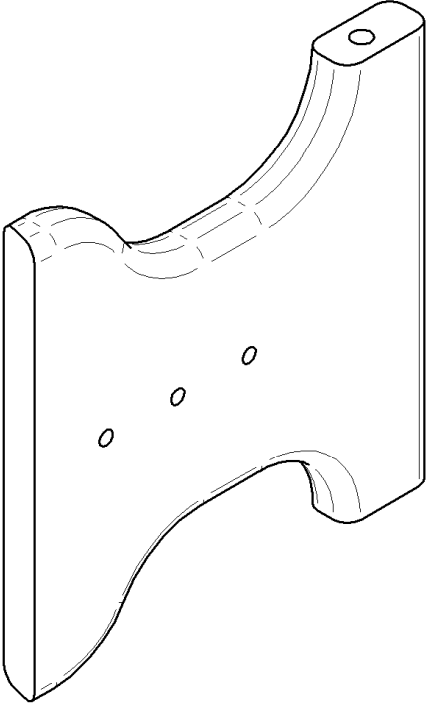


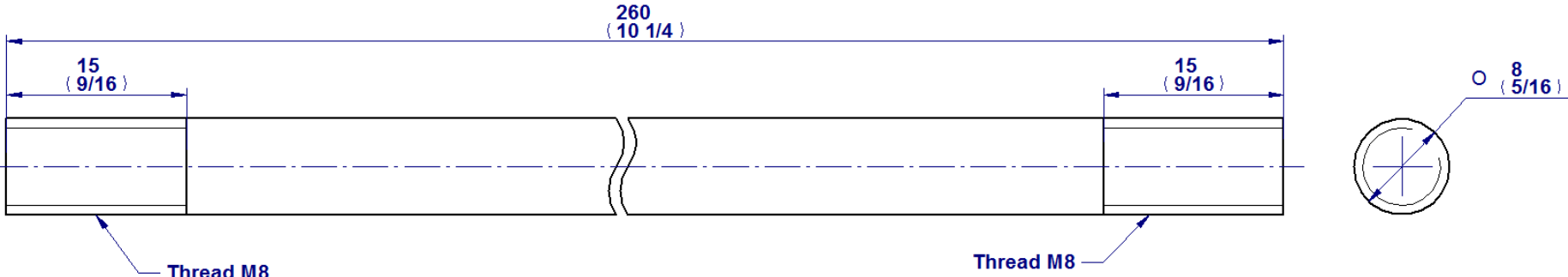
7. Collar



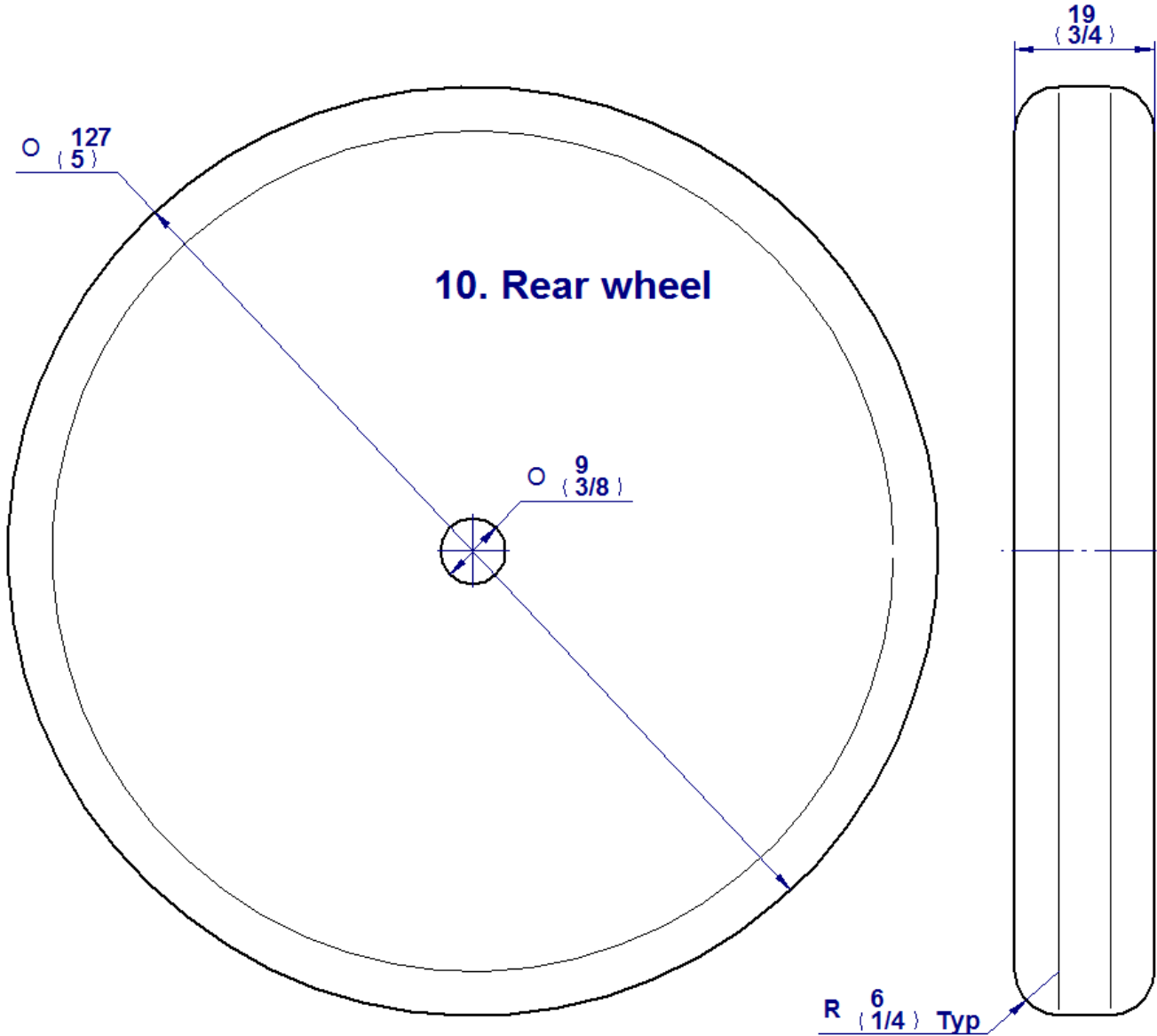


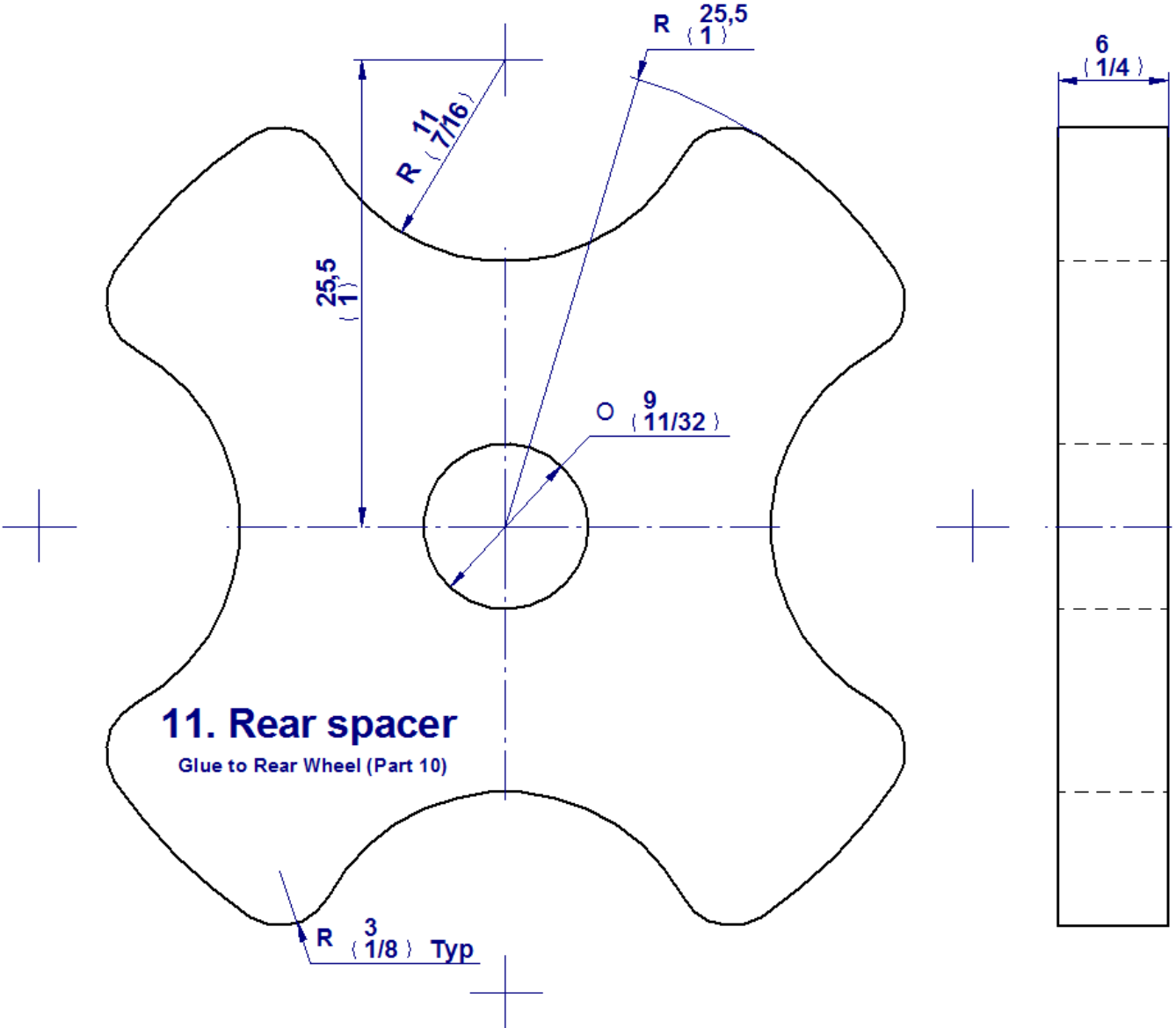
8. Rear support

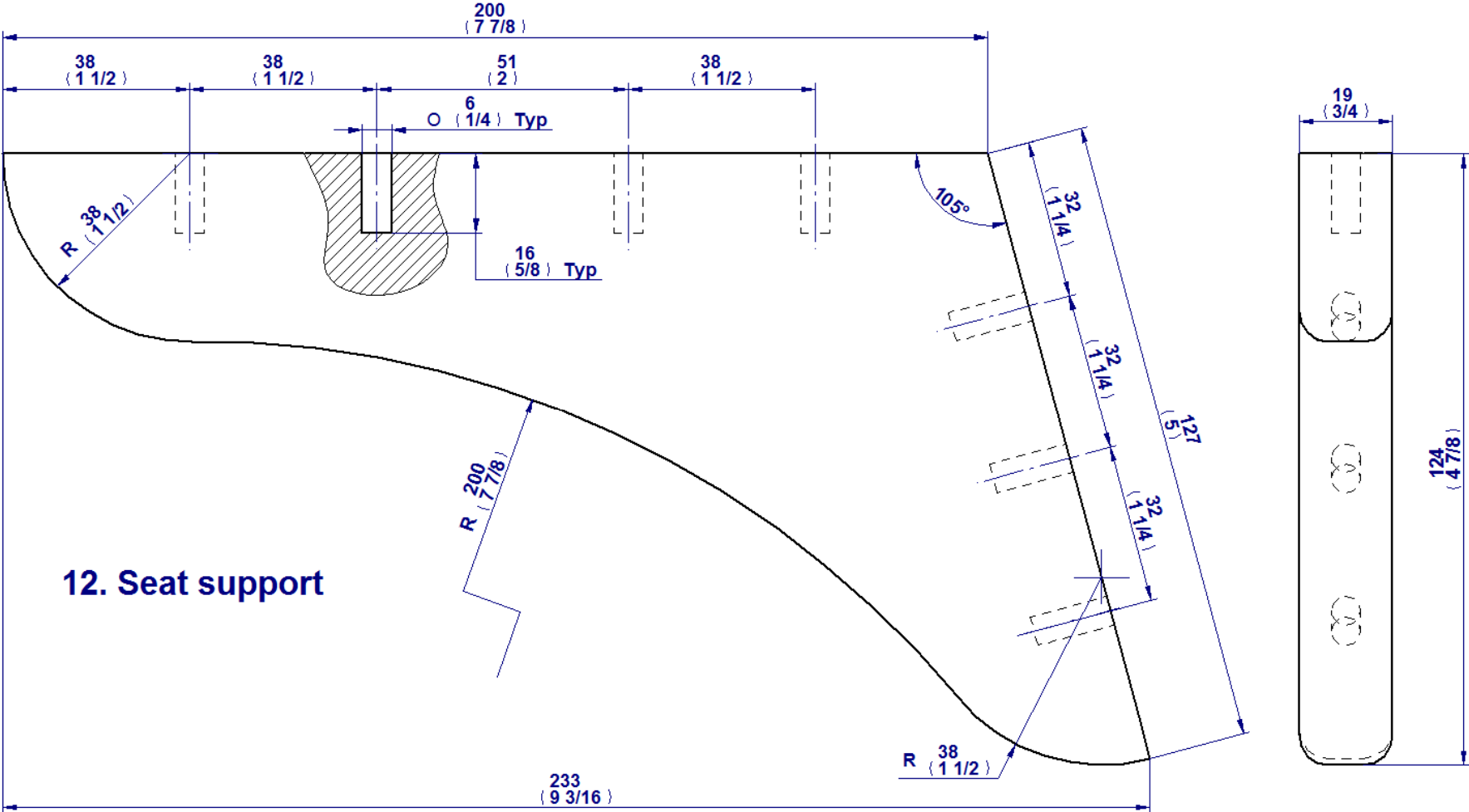


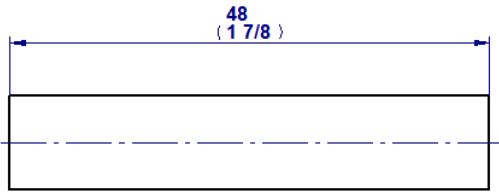


9. Rear threaded axle

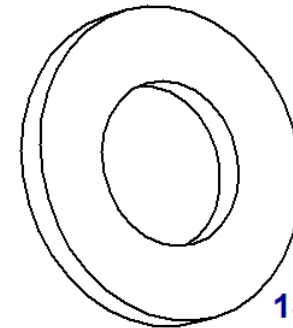
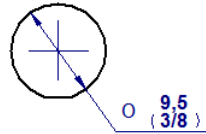




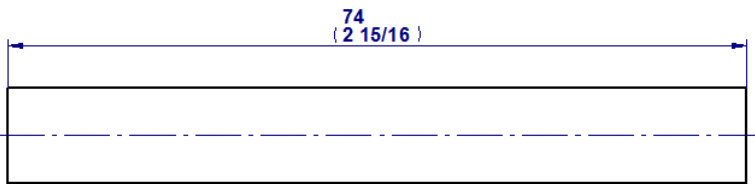




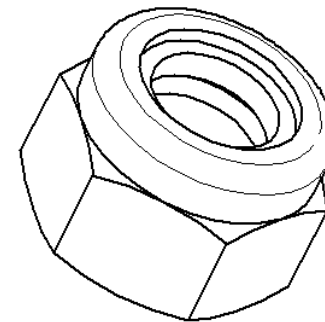
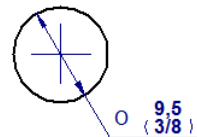
17. Dowel D9,5 x 48mm



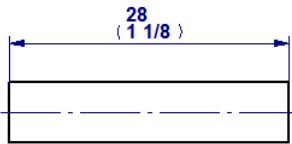
13. Washer D8mm



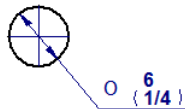
18. Dowel D9,5 x 74mm

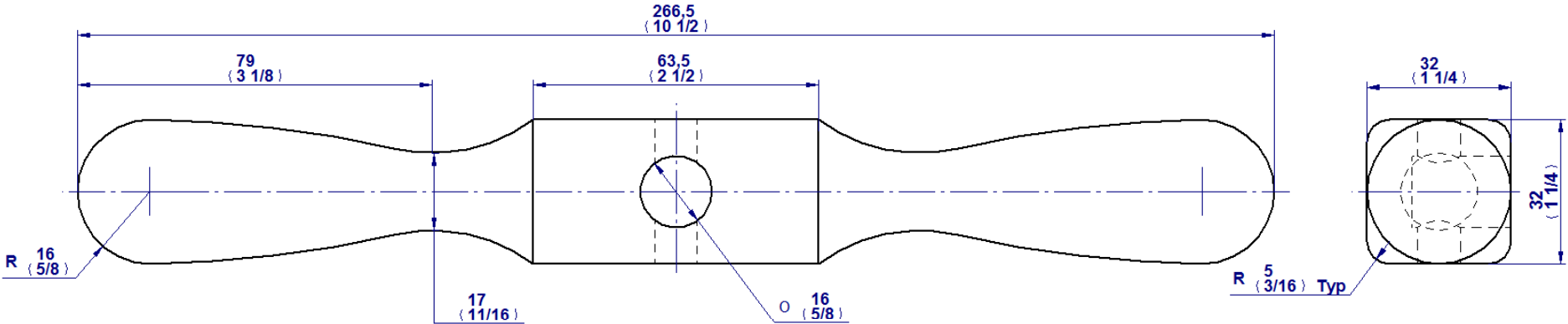


14. Prevailing torque type hexagon nuts



19. Dowel D6 x 28mm





15. Steam

