

Gateleg table plan

On this page you can download the plan for making a gateleg table (thousand leg table).

Gateleg tables belong to drop-leaf type of tables and were first introduced in the 16th-century England. Nowadays, preserved examples of this table type from the Elizabethan and Jacobean era can be found with collectors and in museums. In other words, this is a table of vintage design that can easily fit into the wooden interior.



A gateleg table usually consists of an oval top composed of three parts, two of which are leaves (flaps) that can be elevated in a horizontal position or lowered towards the legs. The table structure consists of legs, rails, stretchers and a gate (gateleg support) that can be rotated and its role is to keep the leaves in a horizontal position. There are also double-gateleg tables; they are called like that because there are two gate supports on each side of the table where the leaves are found.

This is a very convenient table, taking up little space when the leaves are down. The leaves can be of various shapes and dimensions. When they are lowered, their length can be up to floor level.

If you are skillful to operate a lathe, you may design the table legs and gate according to your taste or even make spiral fluted legs.

Project: Gateleg table plan

A careful analysis of the parts and dimensions in our drawings will quickly convince you that this plan can be used to design a gateleg table with dimensions and in a style that suit you. Table dimensions can be customized to your needs, the legs can be decorated to your liking on the lathe, the shape of the tabletop can be changed (here it is oval-shaped). Also, the way the tabletop is attached to the table structure can be changed, and even a drawer installed. You can easily find some inspiring ideas for your design by searching on the Internet - simply type 'gateleg table' or 'drop leaf table').

Dimensions of the completed gateleg table according to our plan are as follows:

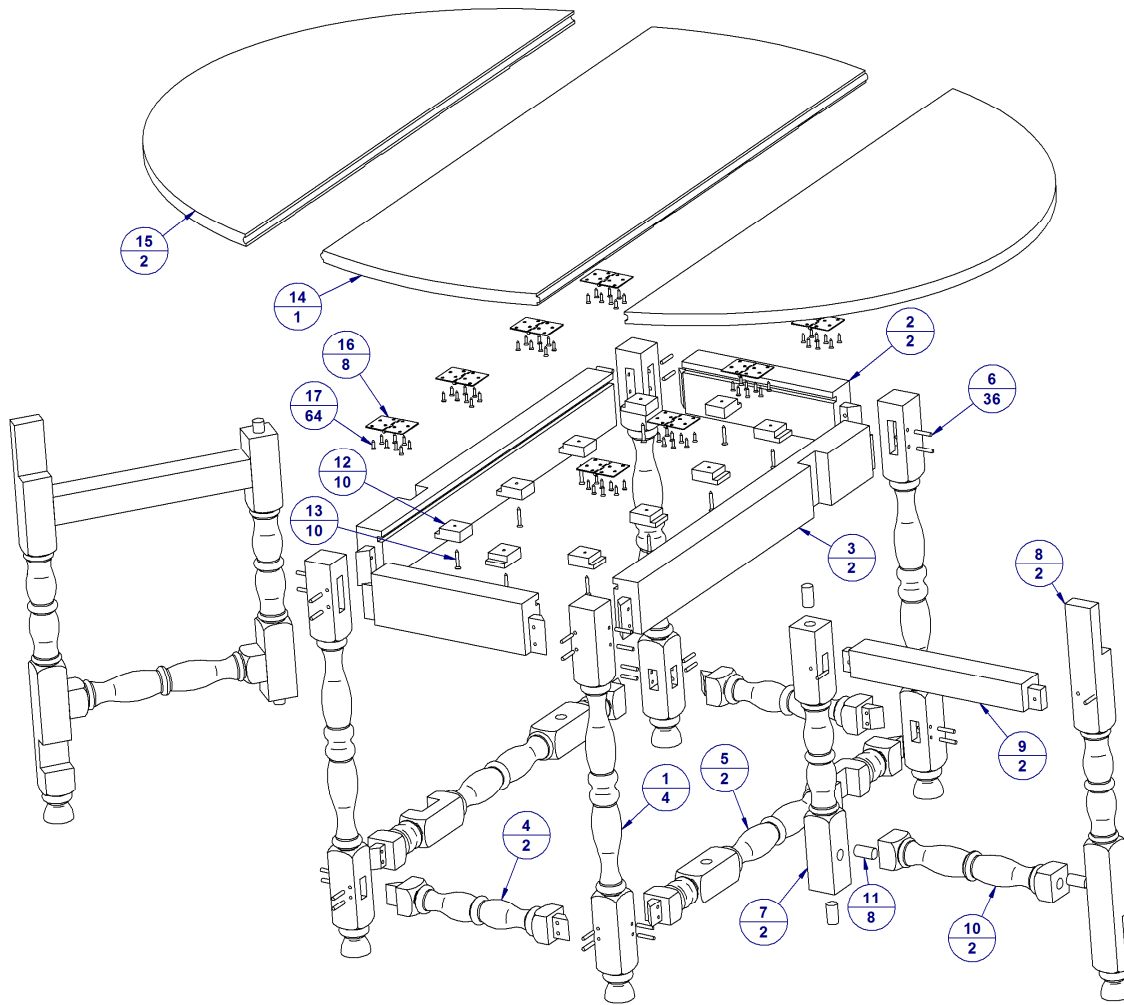
Folded table: L: 473,5mm (18 21/32 in.); W: 1067mm (42 in.); H: 752mm (29 19/32 in.)

Unfolded table: L: 1340mm (52 3/4 in.); W: 1067mm (42 in.); H: 752mm (29 19/32 in.)

Gateleg tables can be made of a variety of woods: Oak, walnut, Maple, Chery...

Project: Gateleg table plan

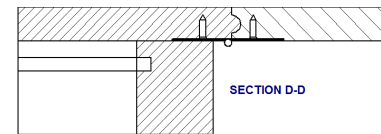
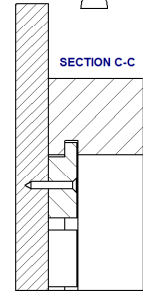
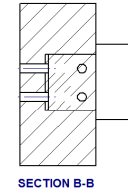
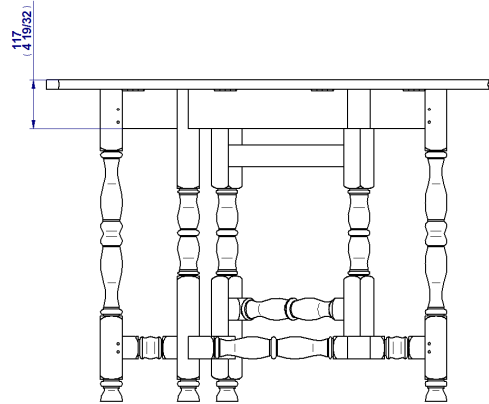
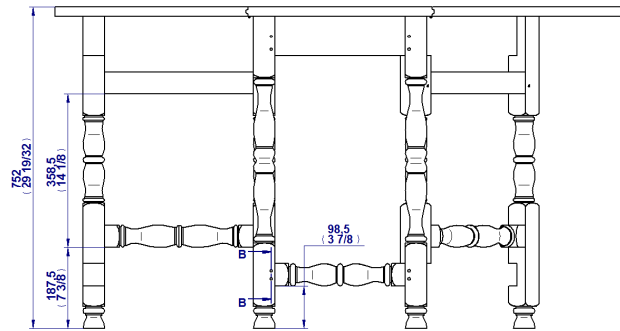
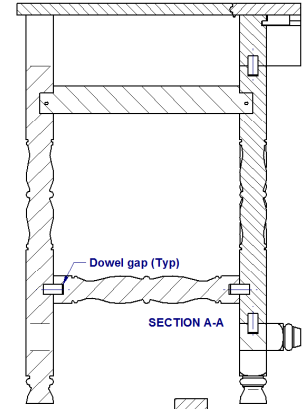
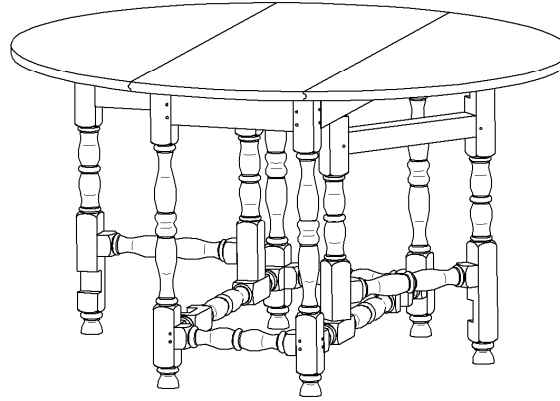
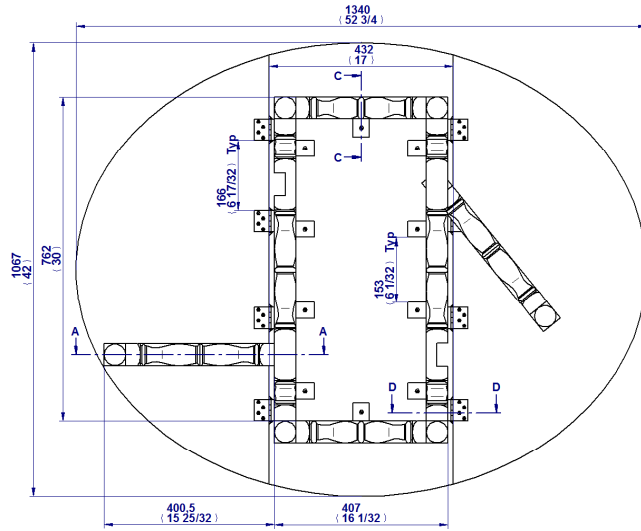
Gateleg table – Exploded view and parts list



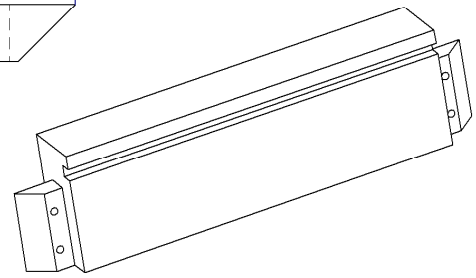
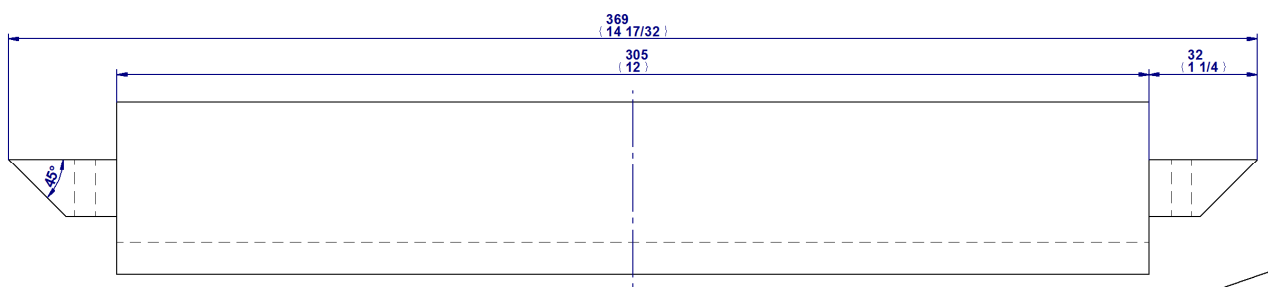
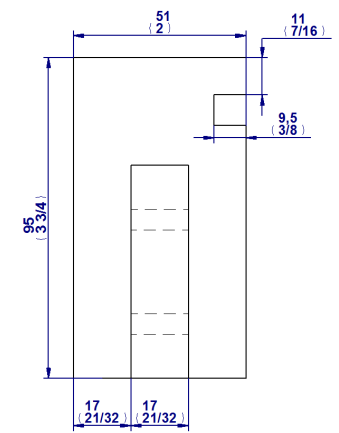
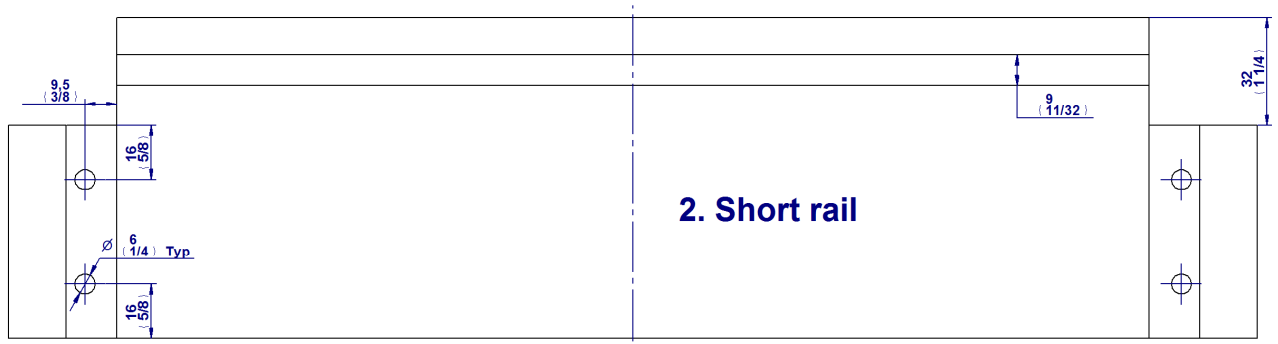
Item Number	Title	Quantity	Material
1	Table leg	4	Wood
2	Short rail	2	Wood
3	Long rail	2	Wood
4	Short stretcher	2	Wood
5	Long stretcher	2	Wood
6	Dowel	36	Wood
7	Gate pillar	2	Wood
8	Gate leg	2	Wood
9	Gate rail	2	Wood
10	Gate stretcher	2	Wood
11	Gate dowel	8	Wood
12	Button	10	Wood
13	Wood screw D5 x 35mm	10	Steel
14	Table top	1	Wood
15	Drop leaf	2	Wood
16	Hinge	8	
17	Wood screw D4 x 17mm	64	Steel

Project: Gateleg table plan

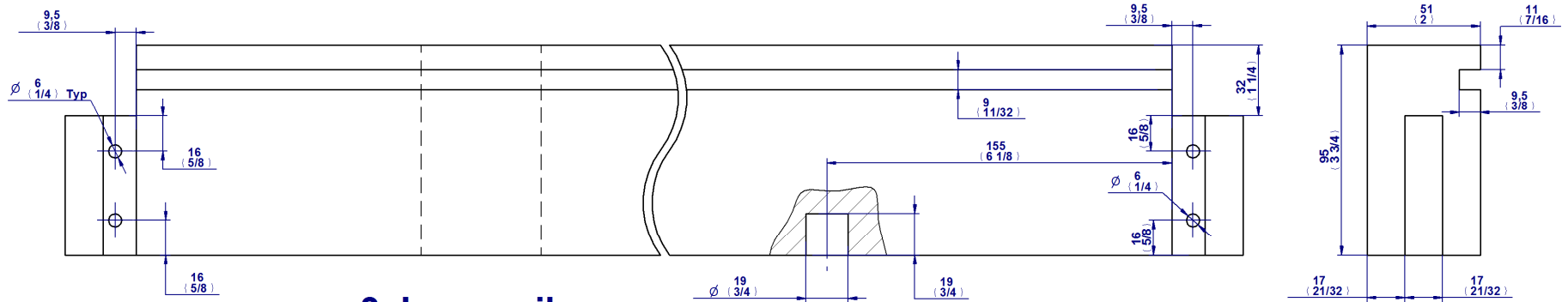
Gateleg table – Assembly drawings



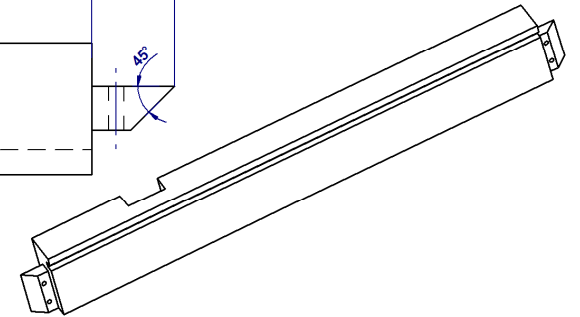
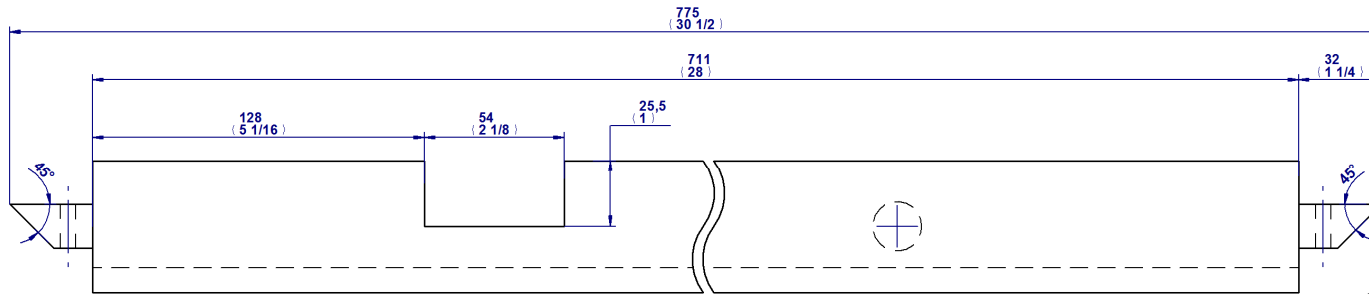
Project: Gateleg table plan



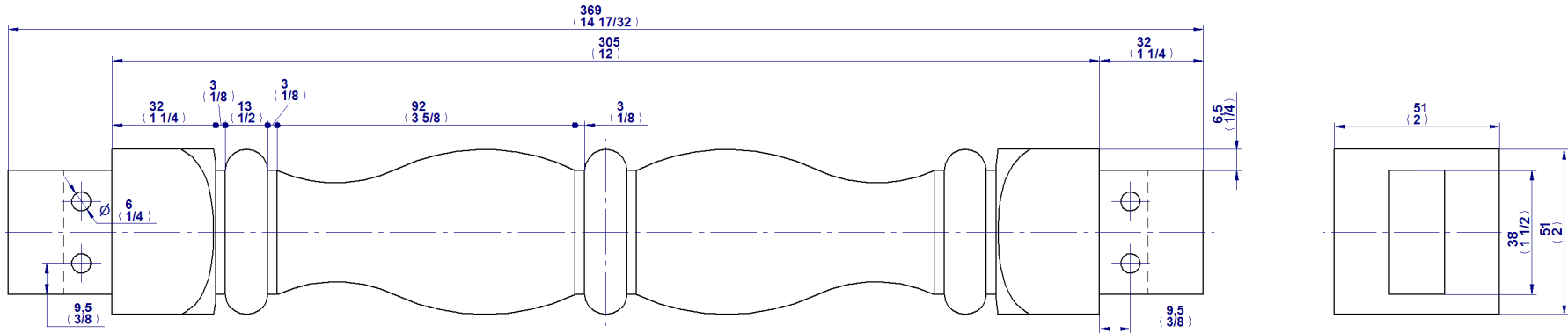
Project: Gateleg table plan



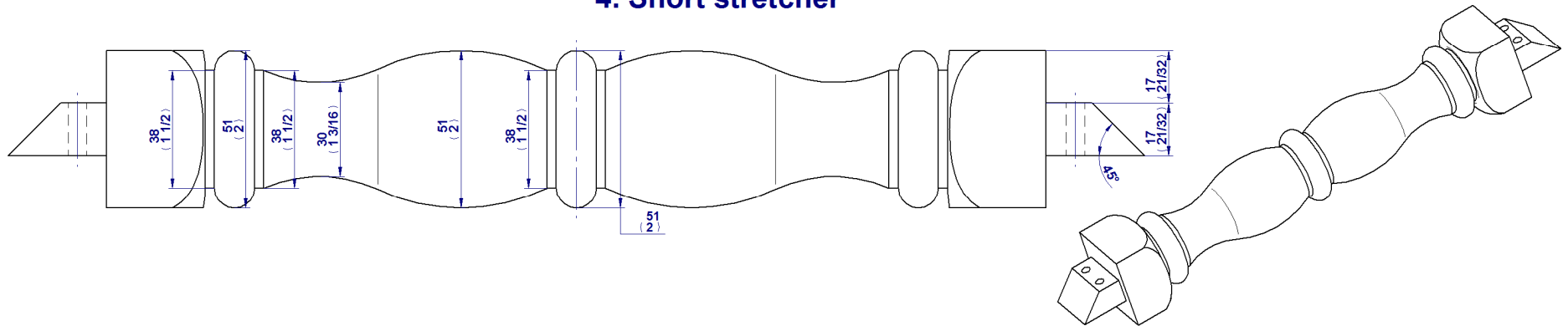
3. Long rail



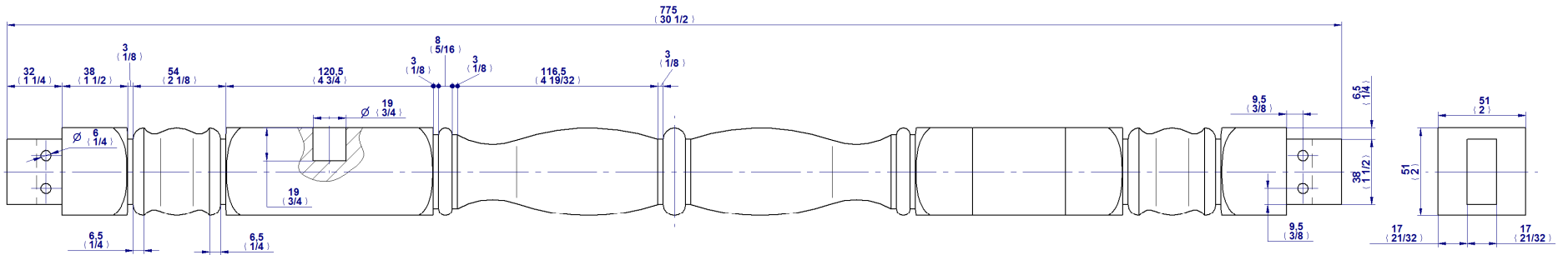
Project: Gateleg table plan



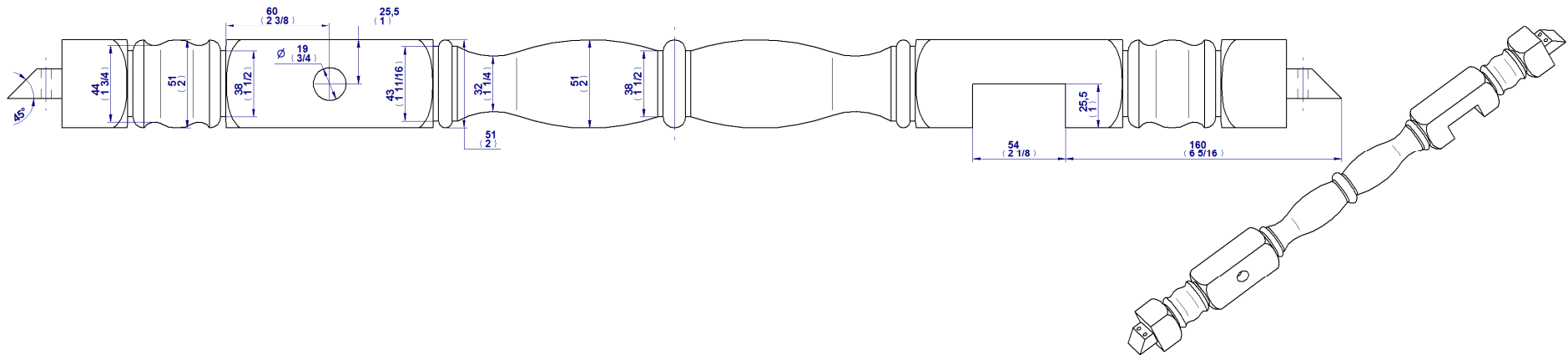
4. Short stretcher

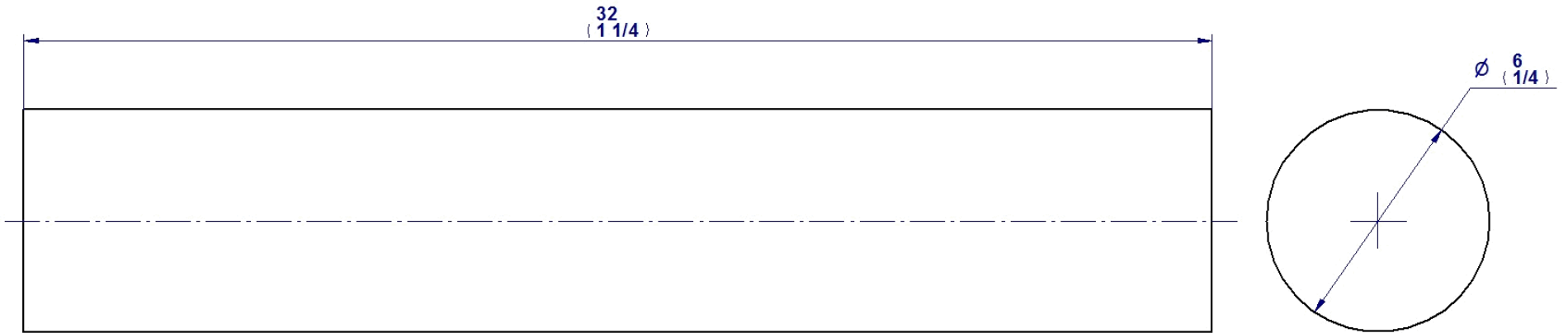


Project: Gateleg table plan



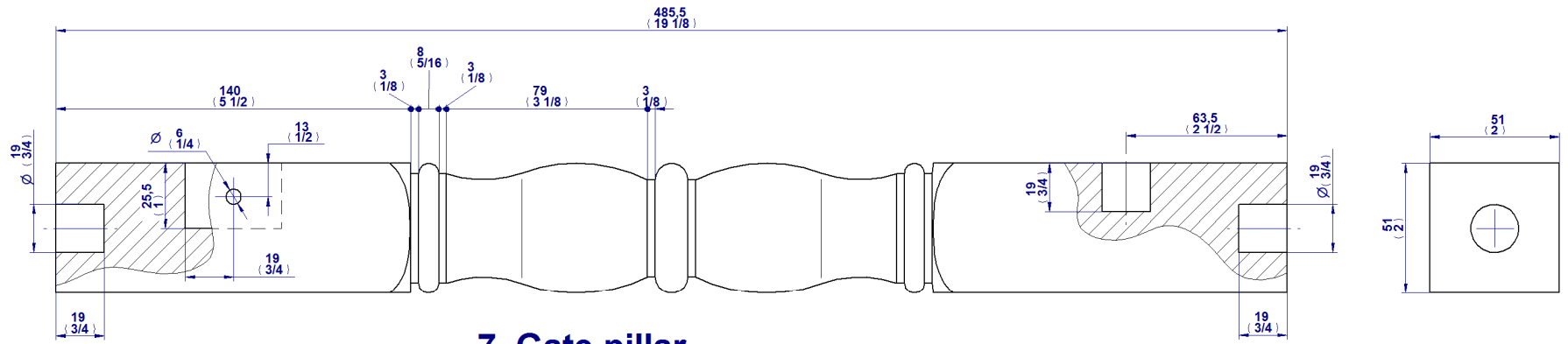
5. Long stretcher



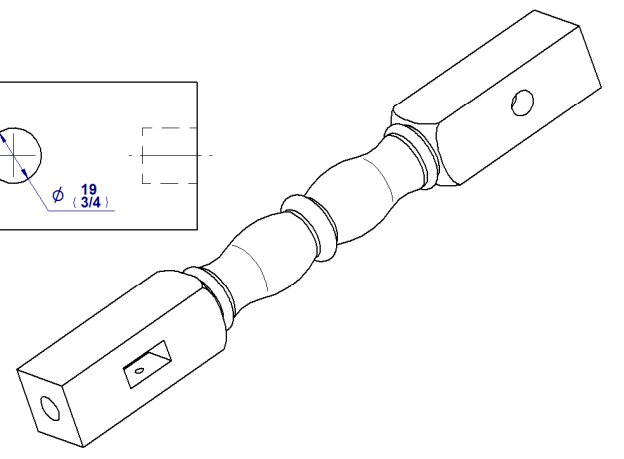
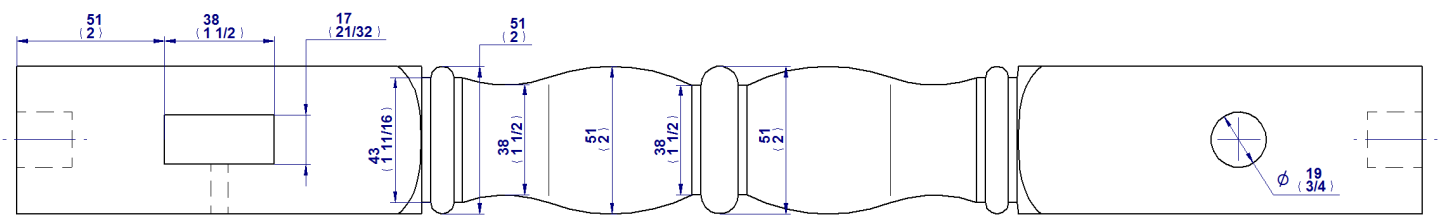


6. Dowel

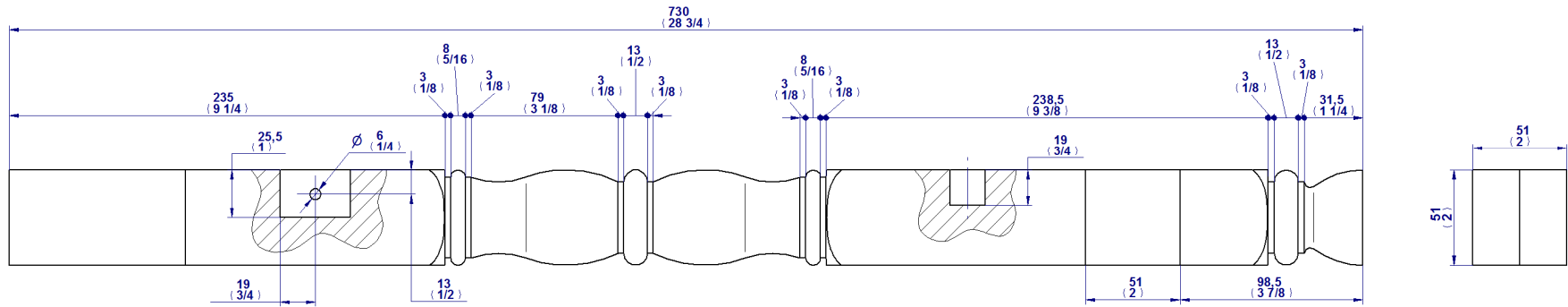
Project: Gateleg table plan



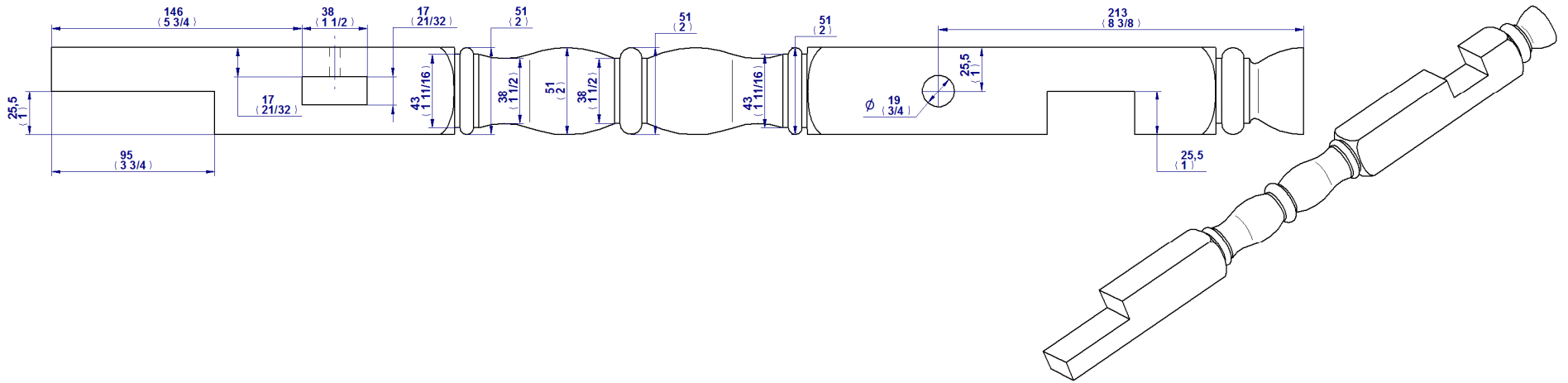
7. Gate pillar



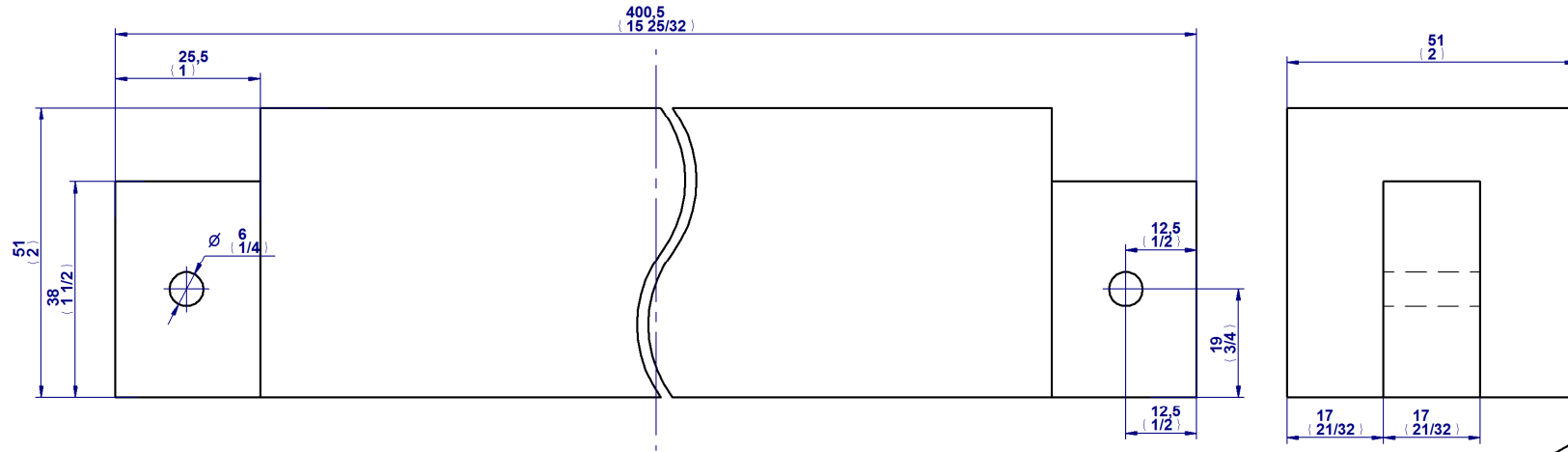
Project: Gateleg table plan



8. Gate leg

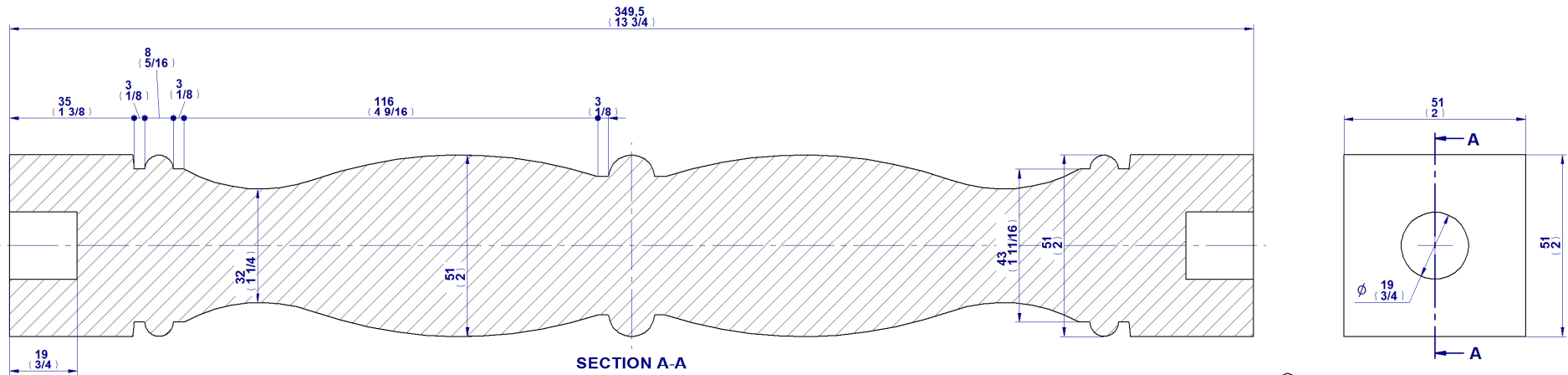


Project: Gateleg table plan

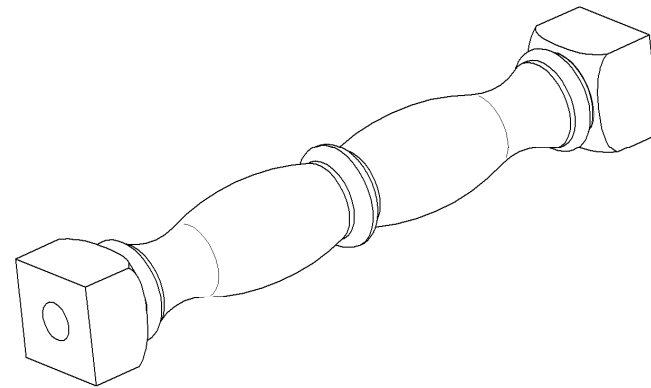


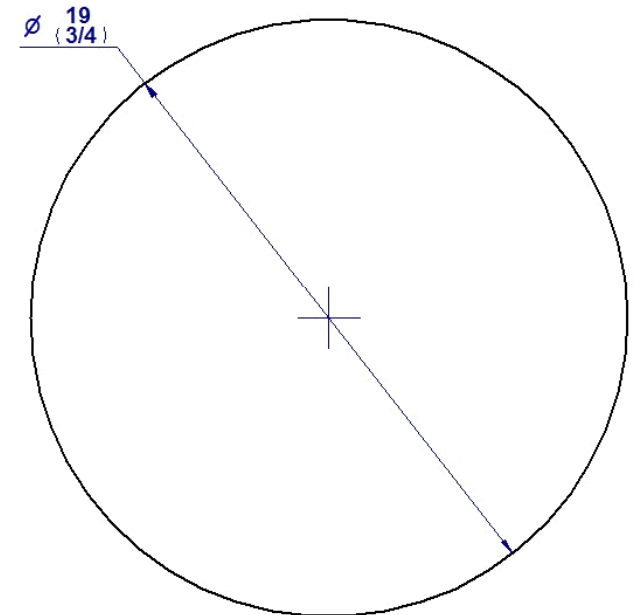
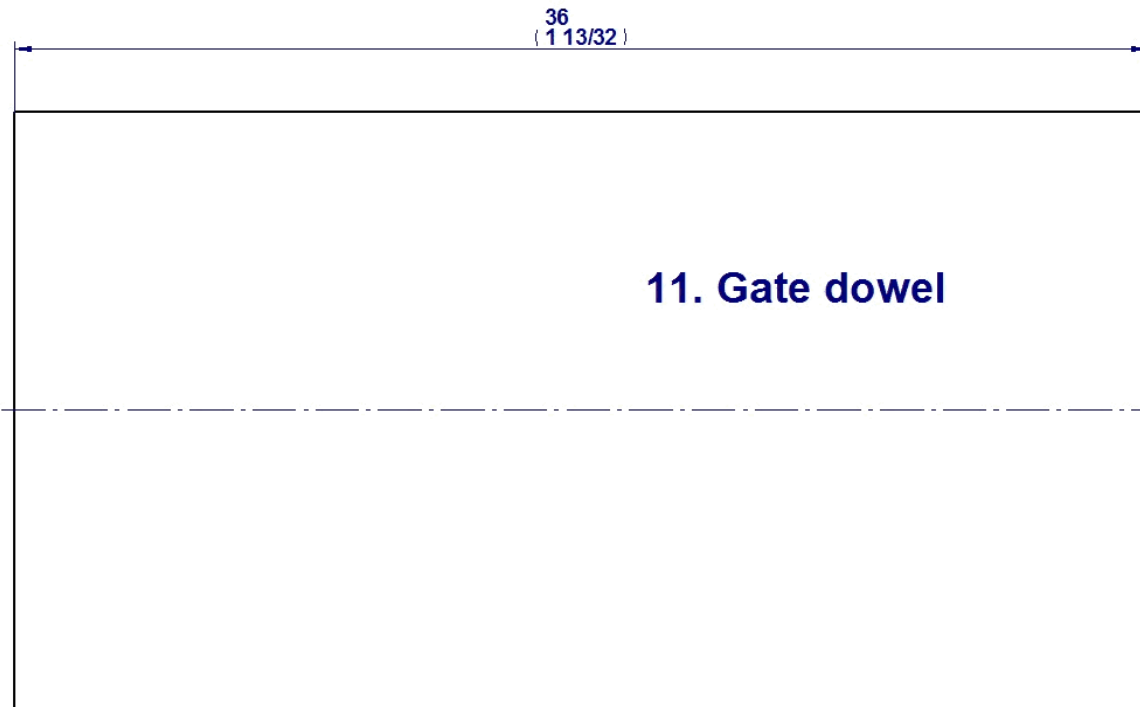
9. Gate Rail

Project: Gateleg table plan

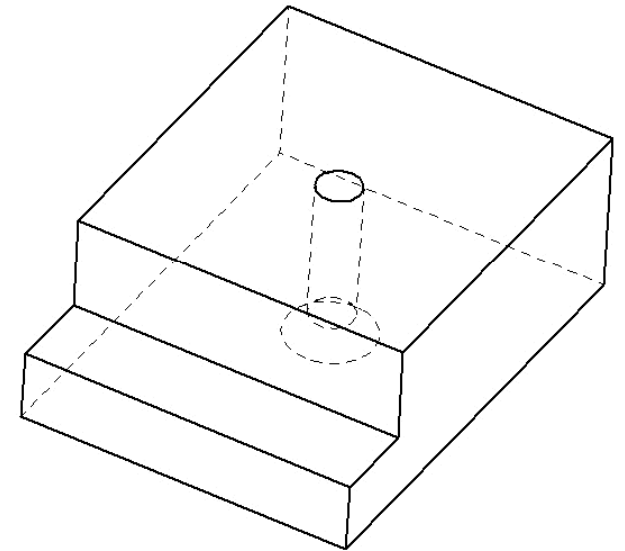
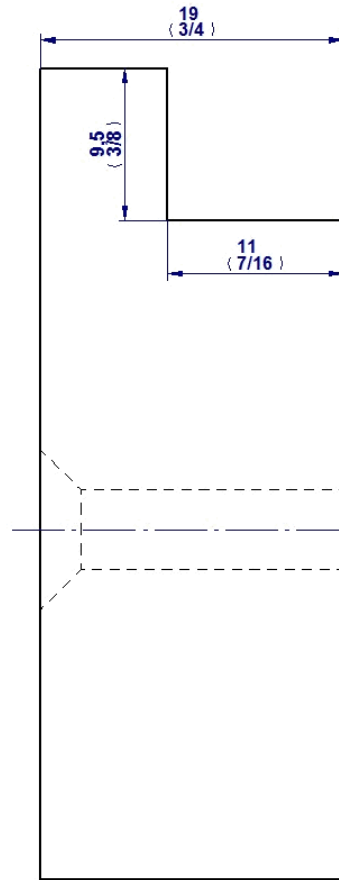
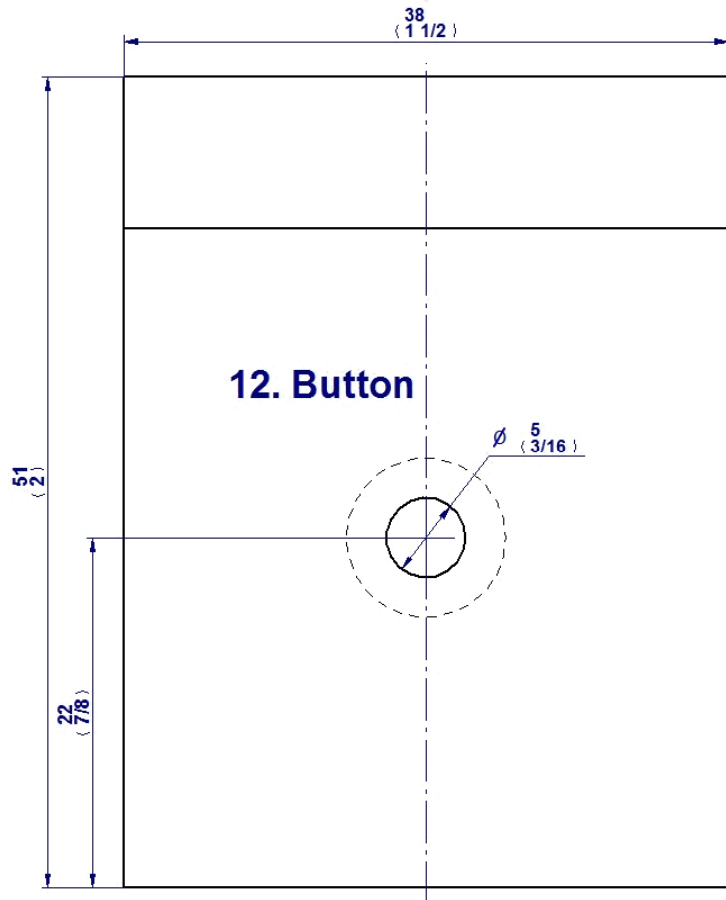


10. Gate stretcher

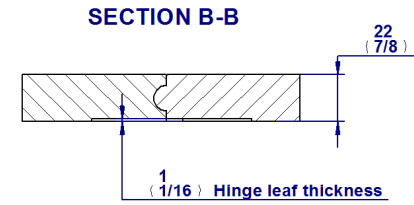
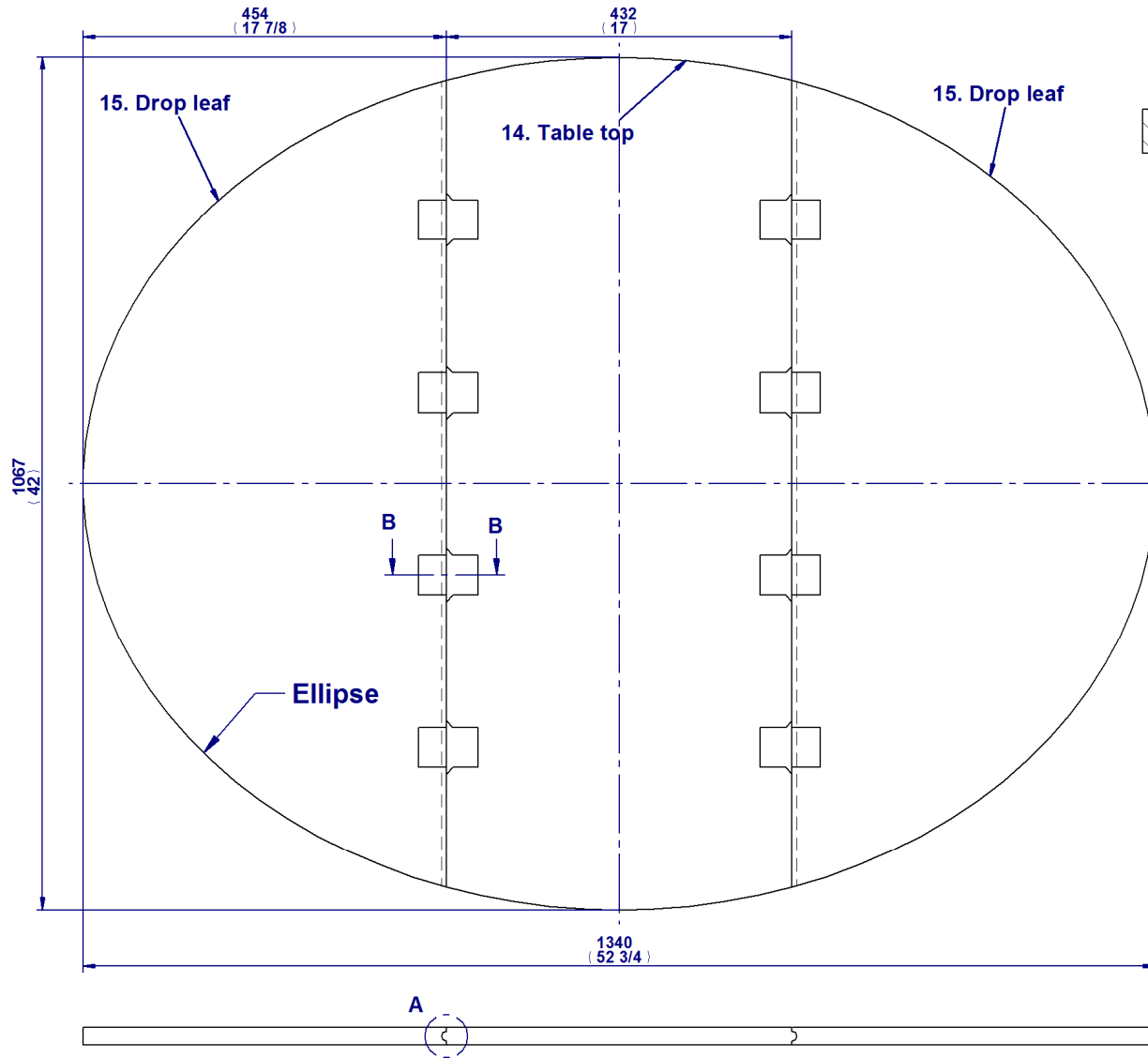




Project: Gateleg table plan



Project: Gateleg table plan



14. Tabletop
15. Drop leaf

