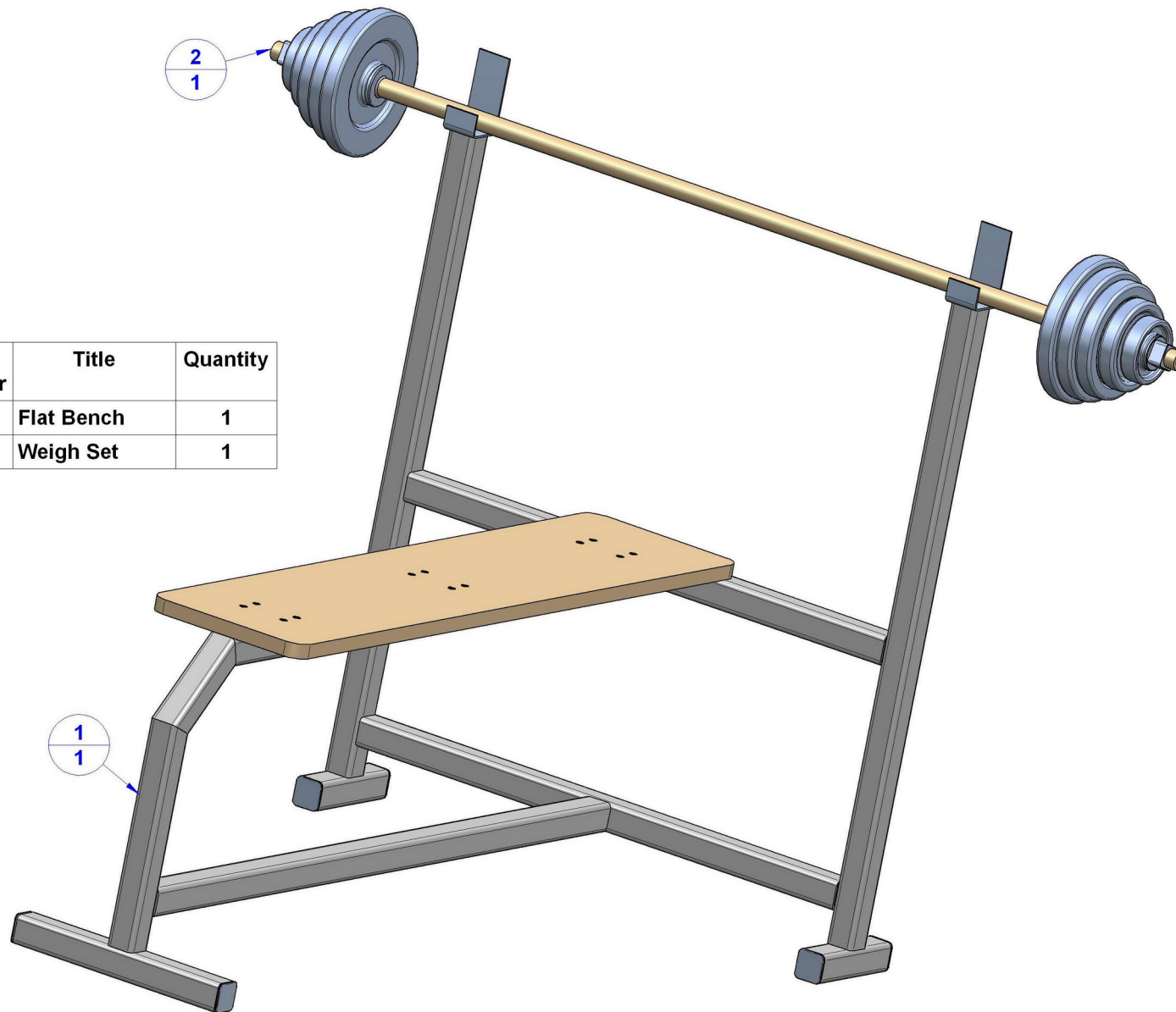


Olympic flat bench with weight set plan



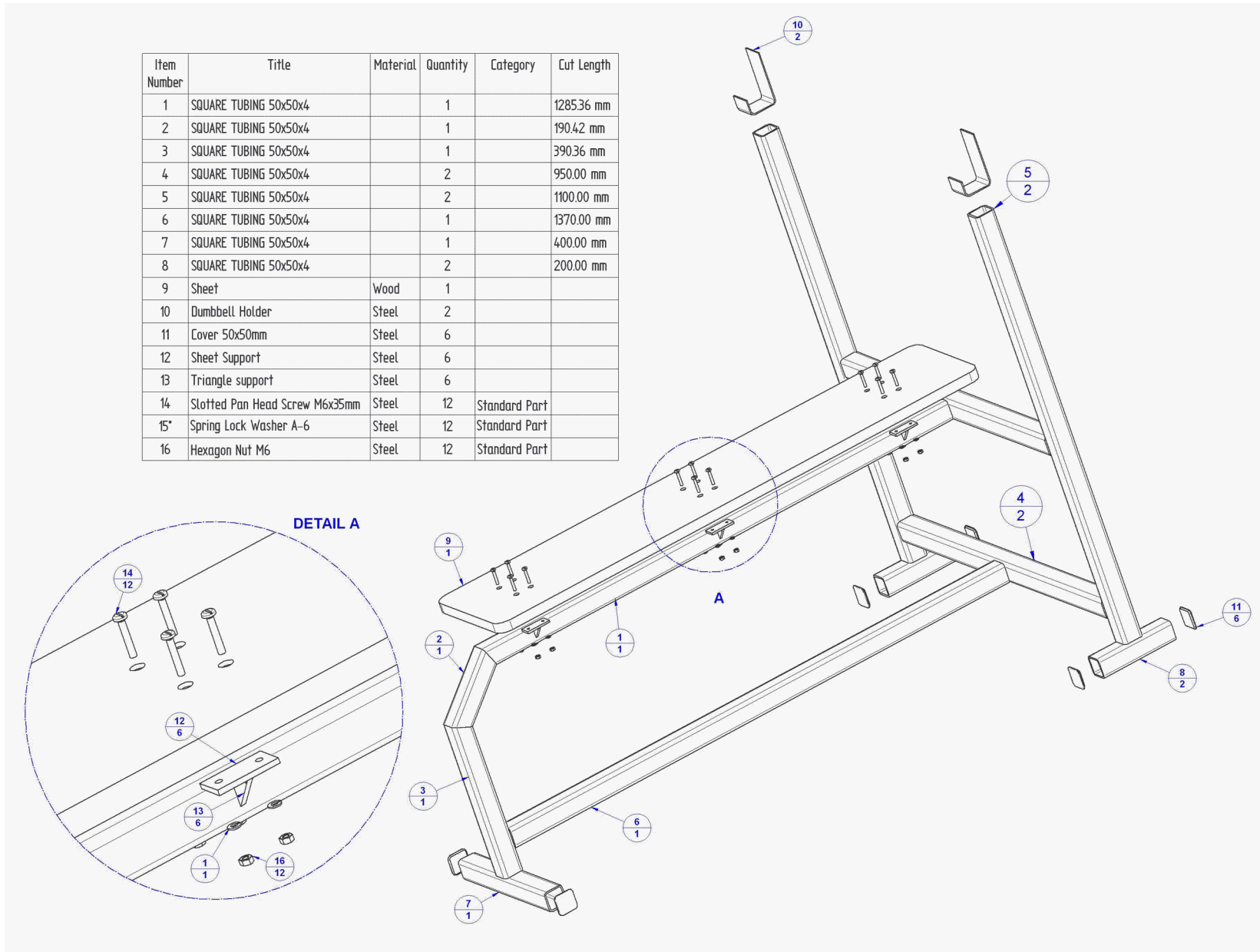
Sub-assembly List

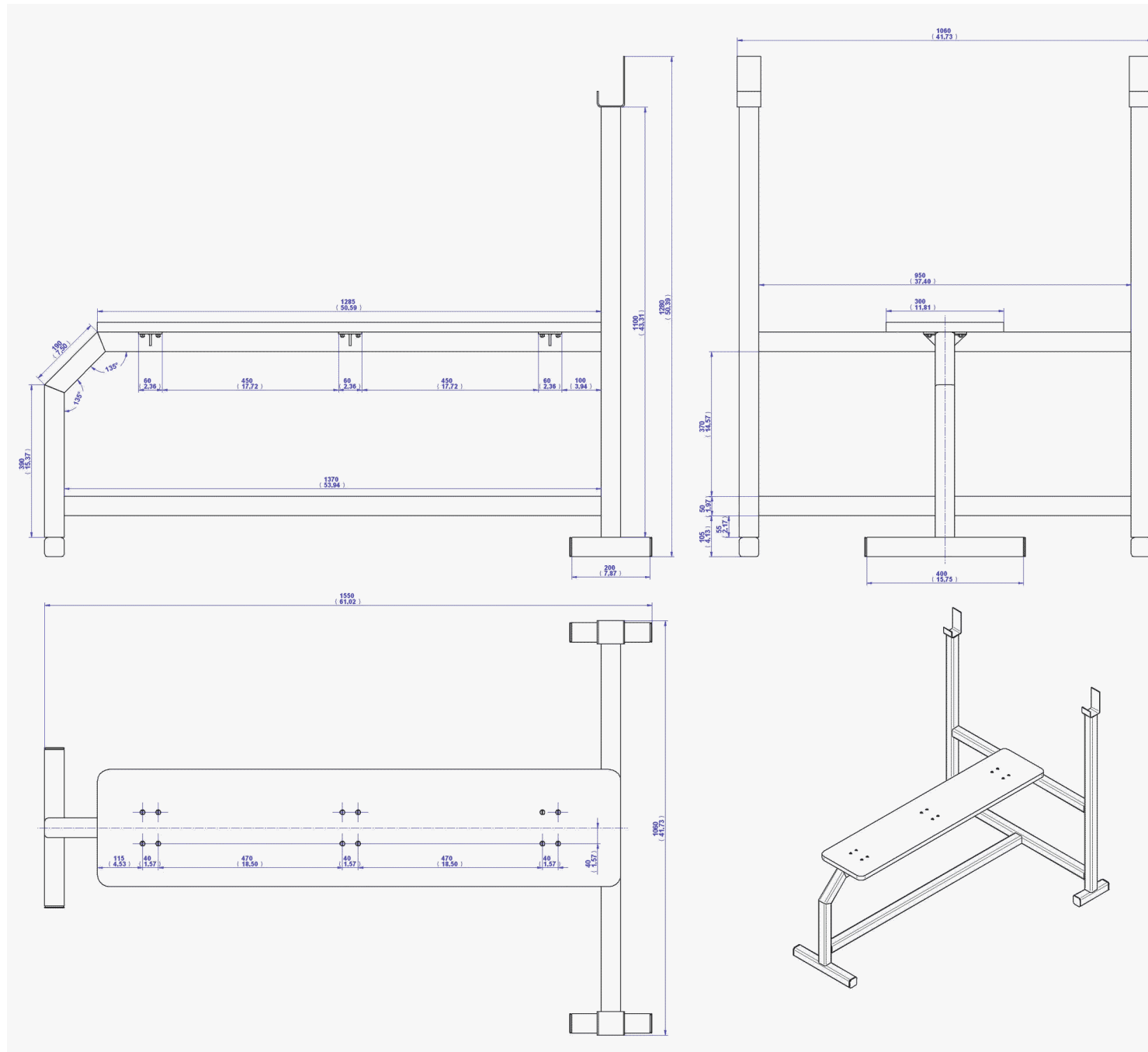
Item Number	Title	Quantity
1	Flat Bench	1
2	Weigh Set	1



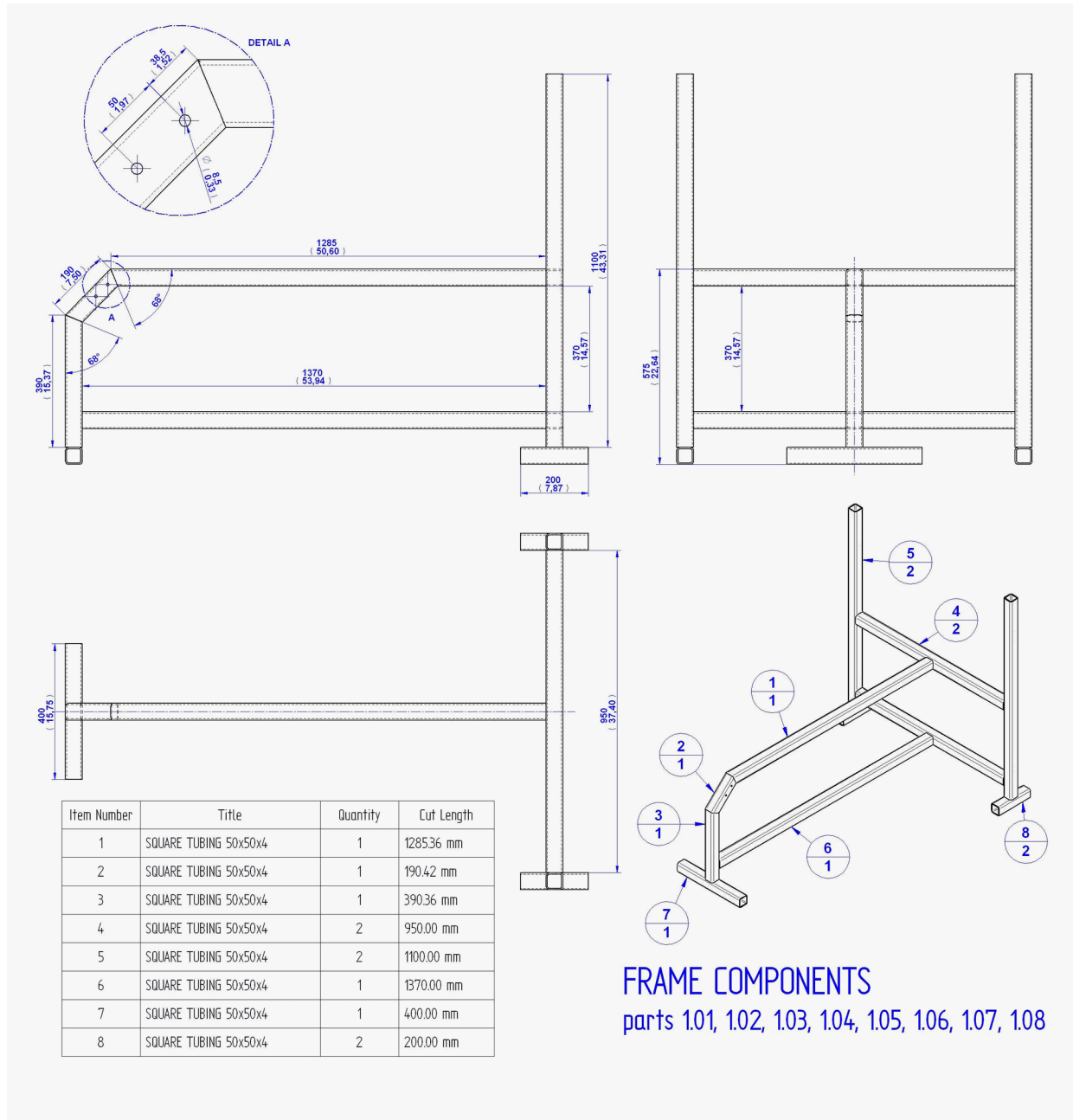
1. Flat Bench Sub-assembly – Parts List and 2D Documentation

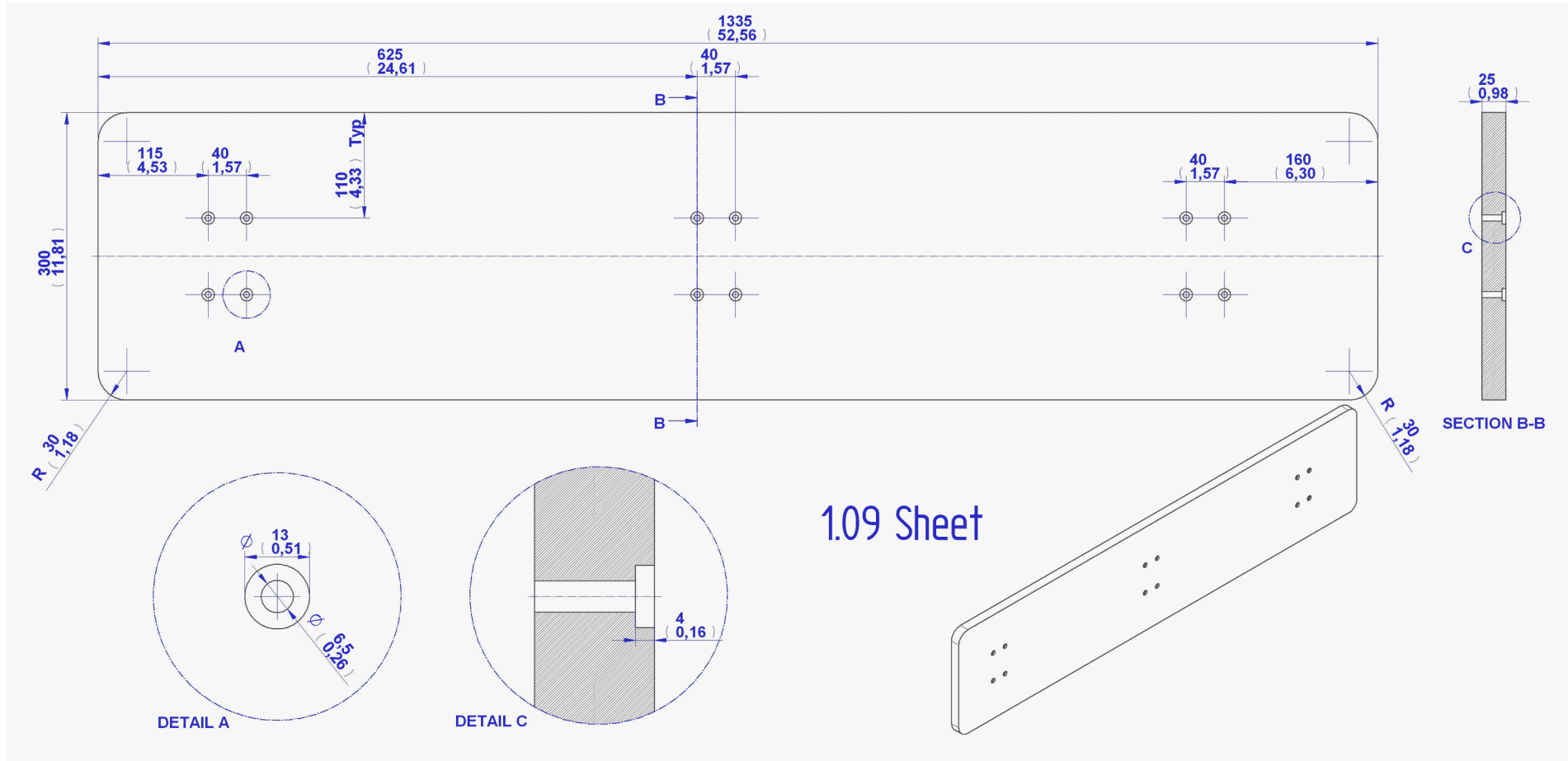
Item Number	Title	Material	Quantity	Category	Cut Length
1	SQUARE TUBING 50x50x4		1		1285.36 mm
2	SQUARE TUBING 50x50x4		1		190.42 mm
3	SQUARE TUBING 50x50x4		1		390.36 mm
4	SQUARE TUBING 50x50x4		2		950.00 mm
5	SQUARE TUBING 50x50x4		2		1100.00 mm
6	SQUARE TUBING 50x50x4		1		1370.00 mm
7	SQUARE TUBING 50x50x4		1		400.00 mm
8	SQUARE TUBING 50x50x4		2		200.00 mm
9	Sheet	Wood	1		
10	Dumbbell Holder	Steel	2		
11	Cover 50x50mm	Steel	6		
12	Sheet Support	Steel	6		
13	Triangle support	Steel	6		
14	Slotted Pan Head Screw M6x35mm	Steel	12	Standard Part	
15*	Spring Lock Washer A-6	Steel	12	Standard Part	
16	Hexagon Nut M6	Steel	12	Standard Part	



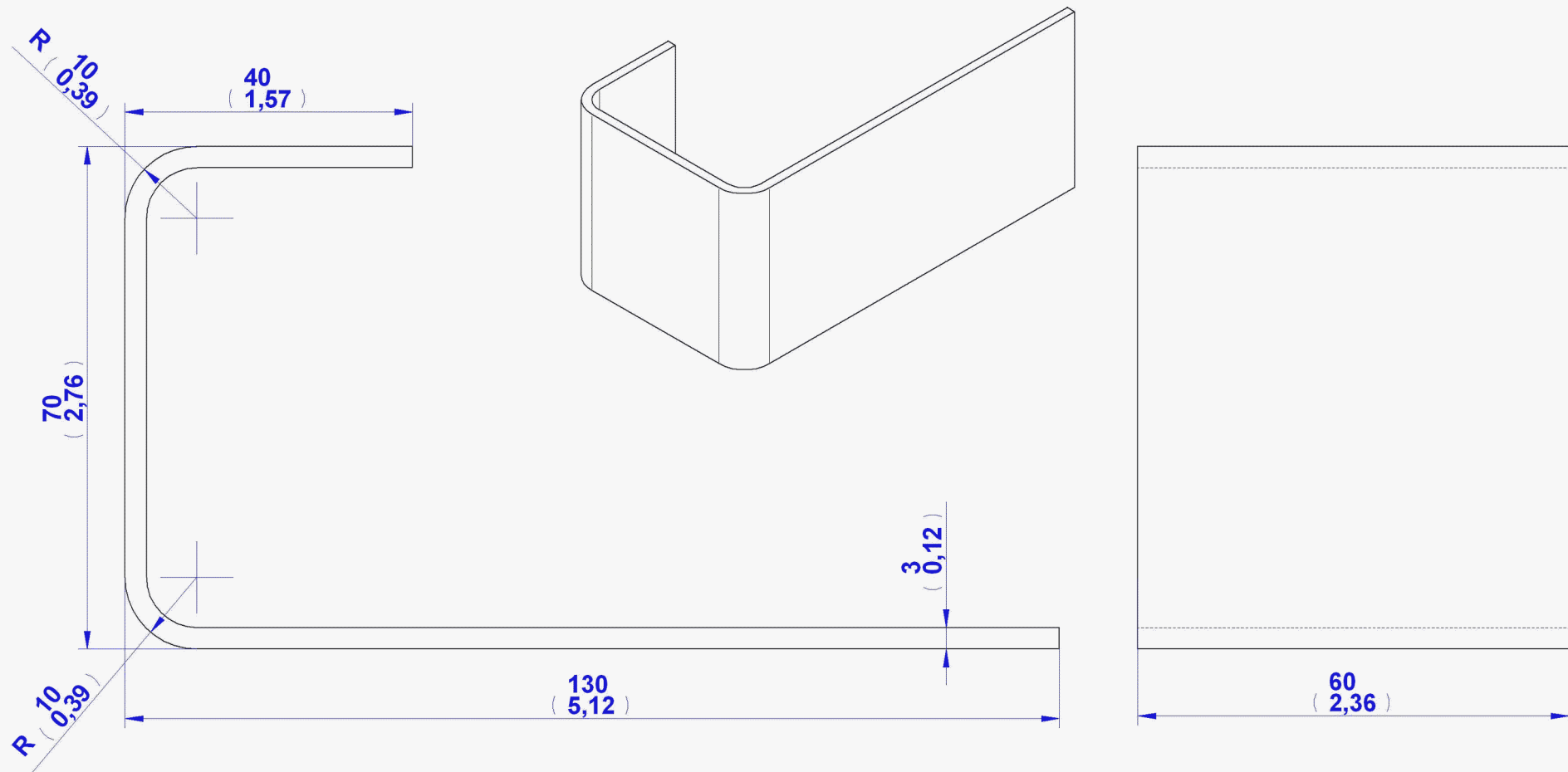


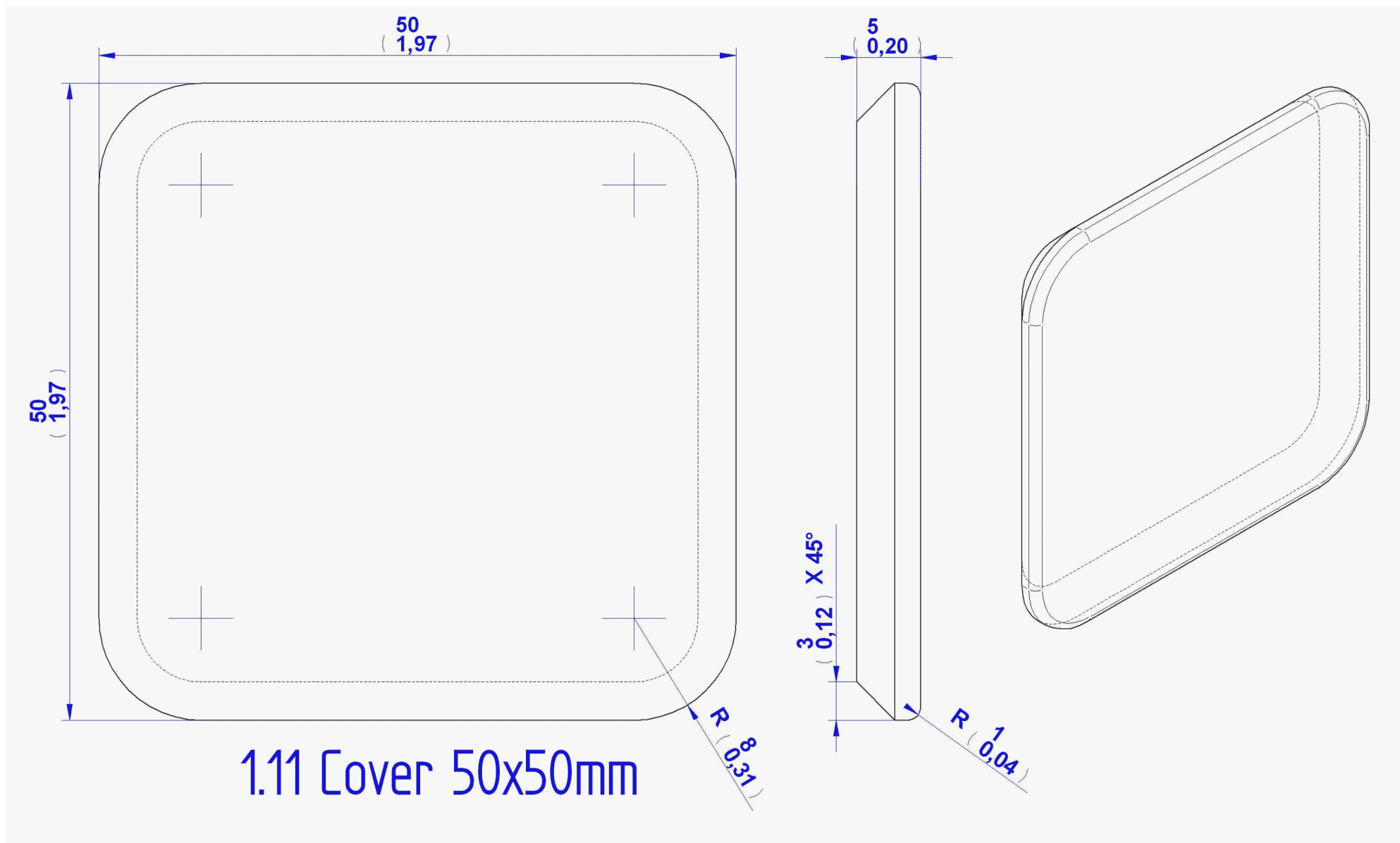
Frame Components

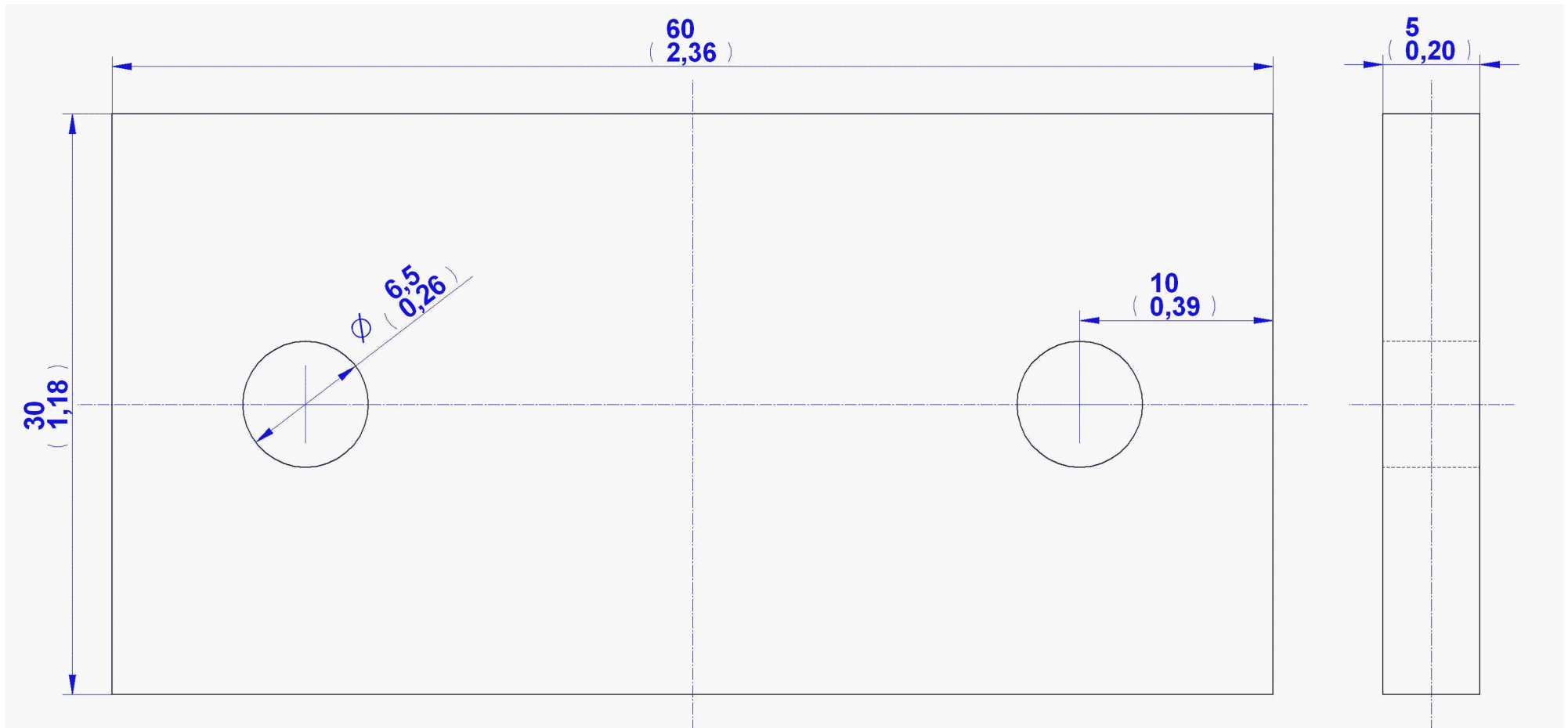




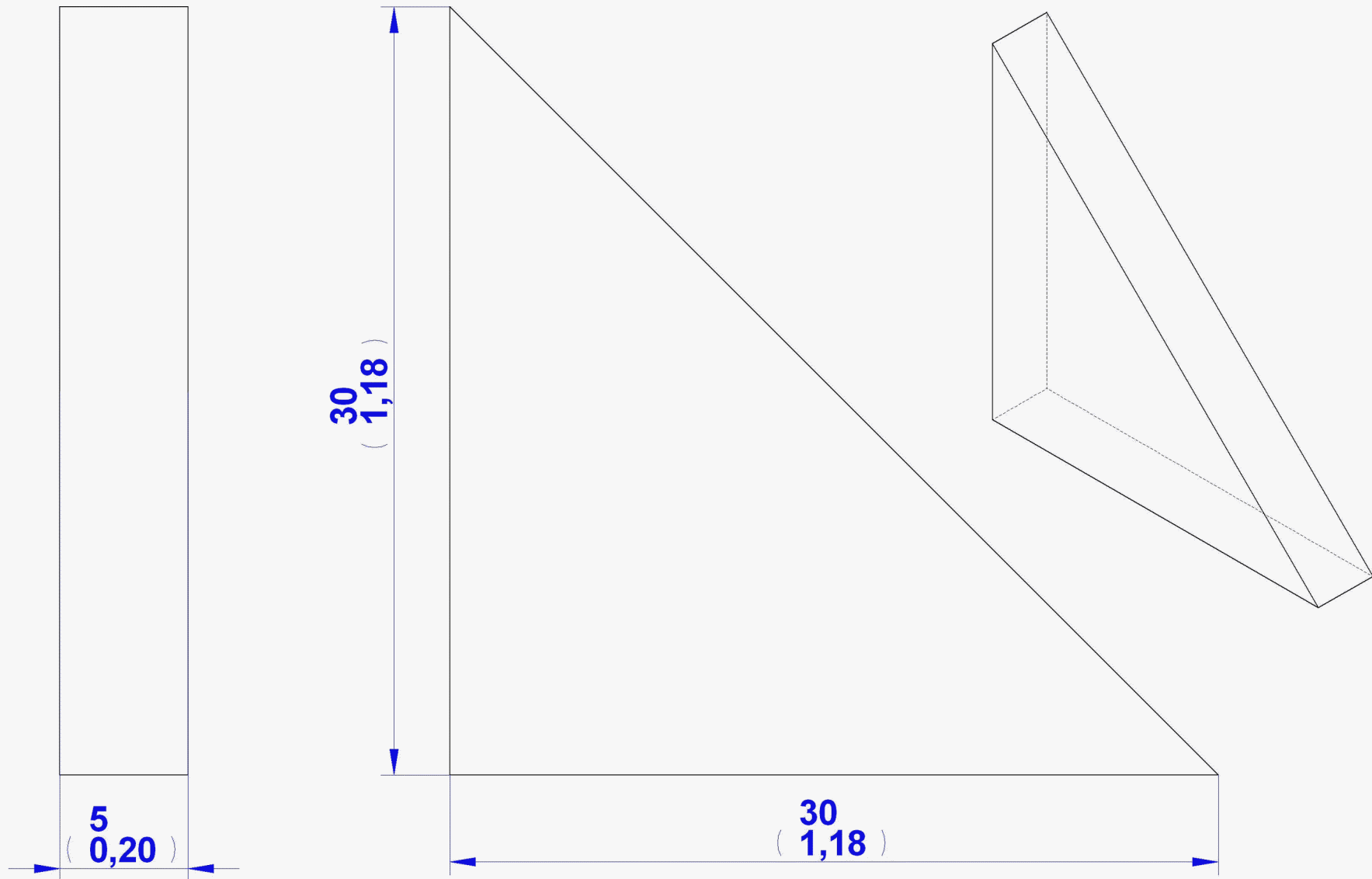
1.10 Dumbbell Holder





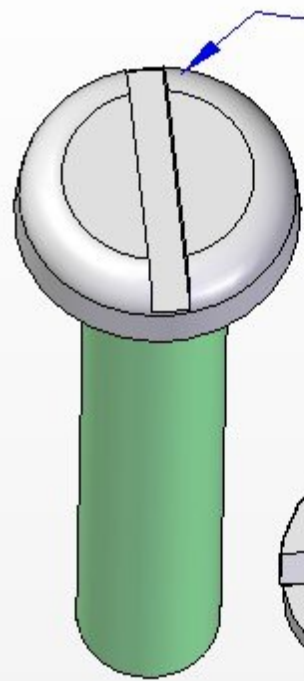


1.12 Sheet Support

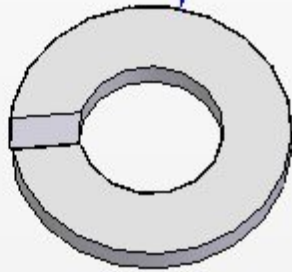


1.13 Triangle Support

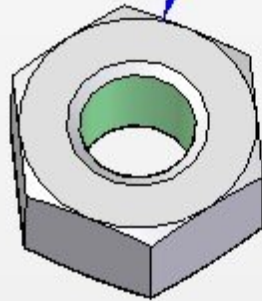
Standard Parts



1.14 Slotted Pan Head Screw M6 x 35mm



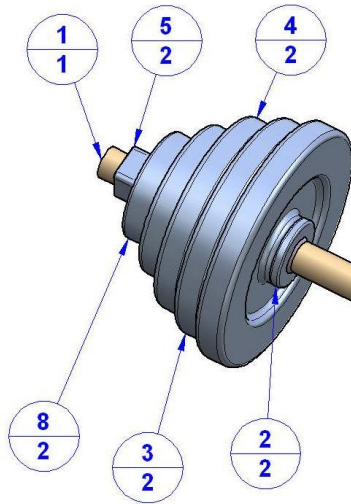
1.15 Spring Lock Washer A - 6



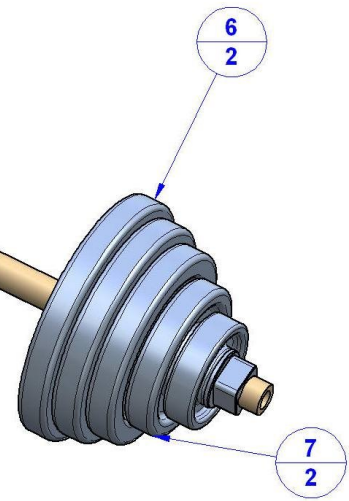
1.16 Hexagon Nut M6

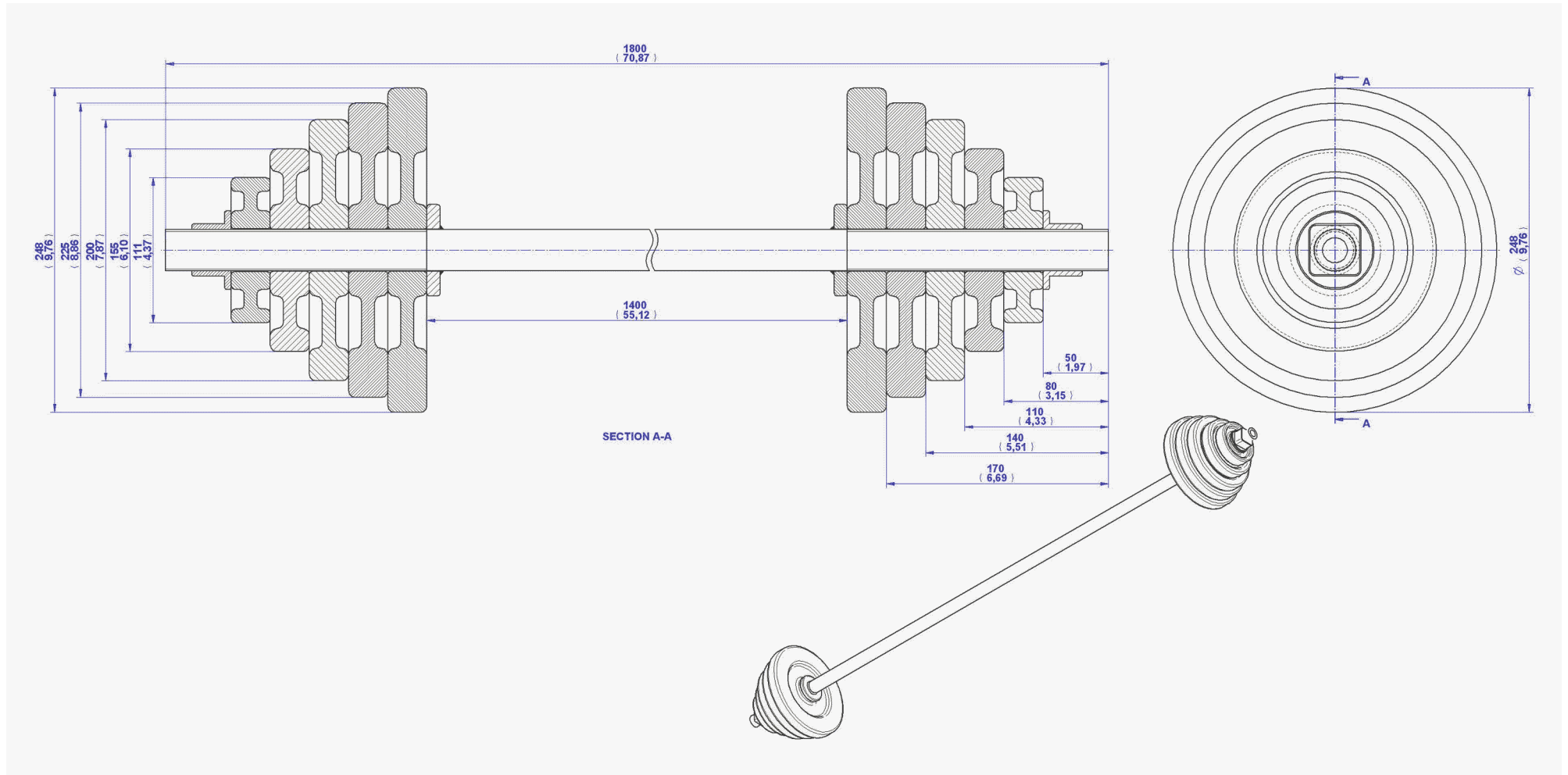
Standard Parts

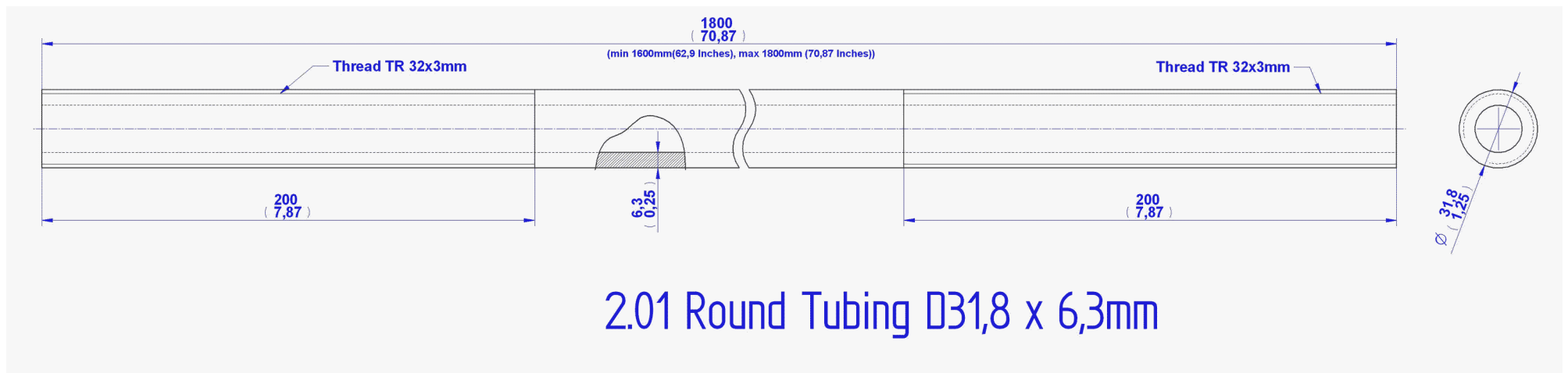
2. Weight Set Subassembly – Parts List and 2D Documentation

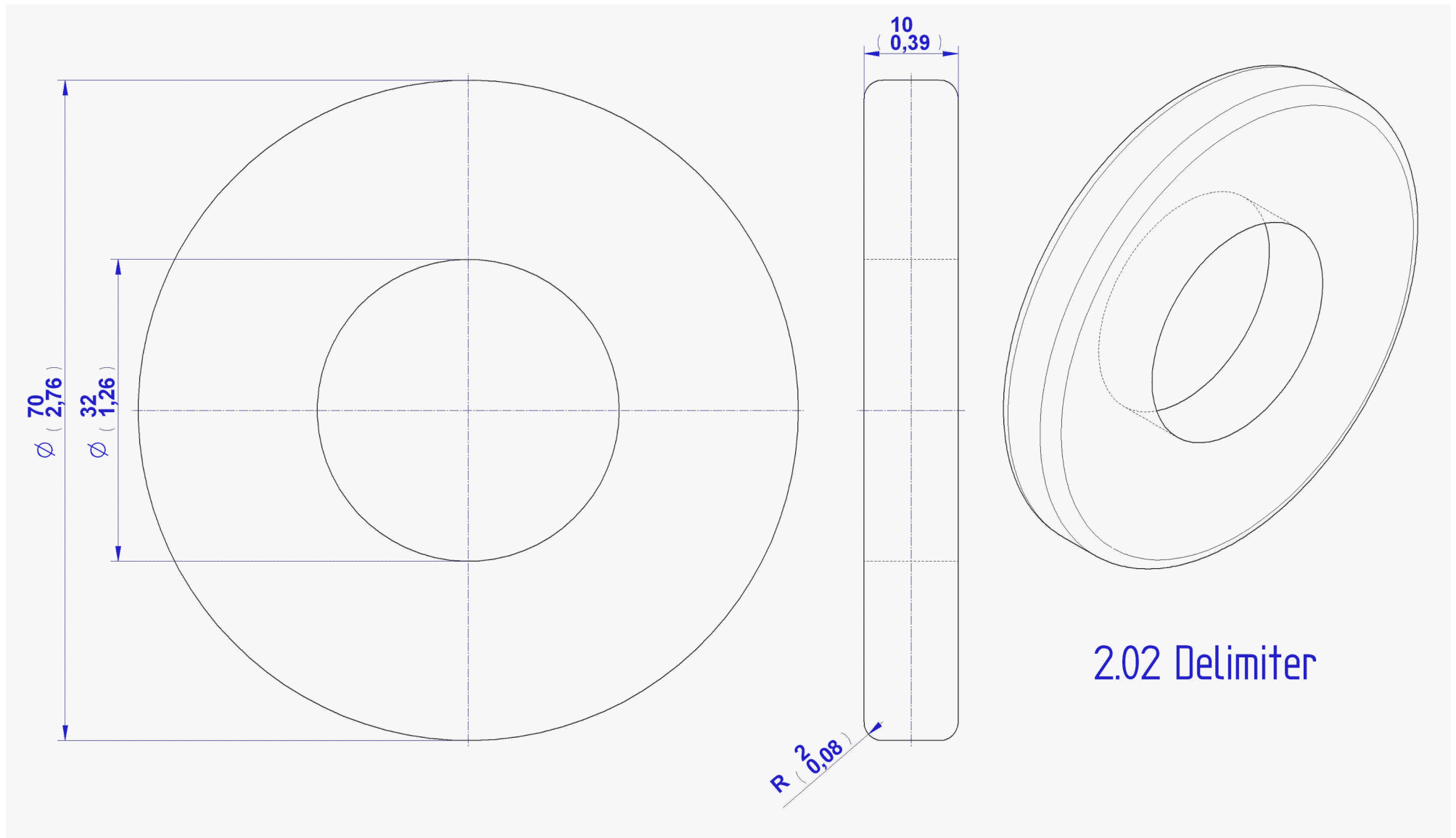


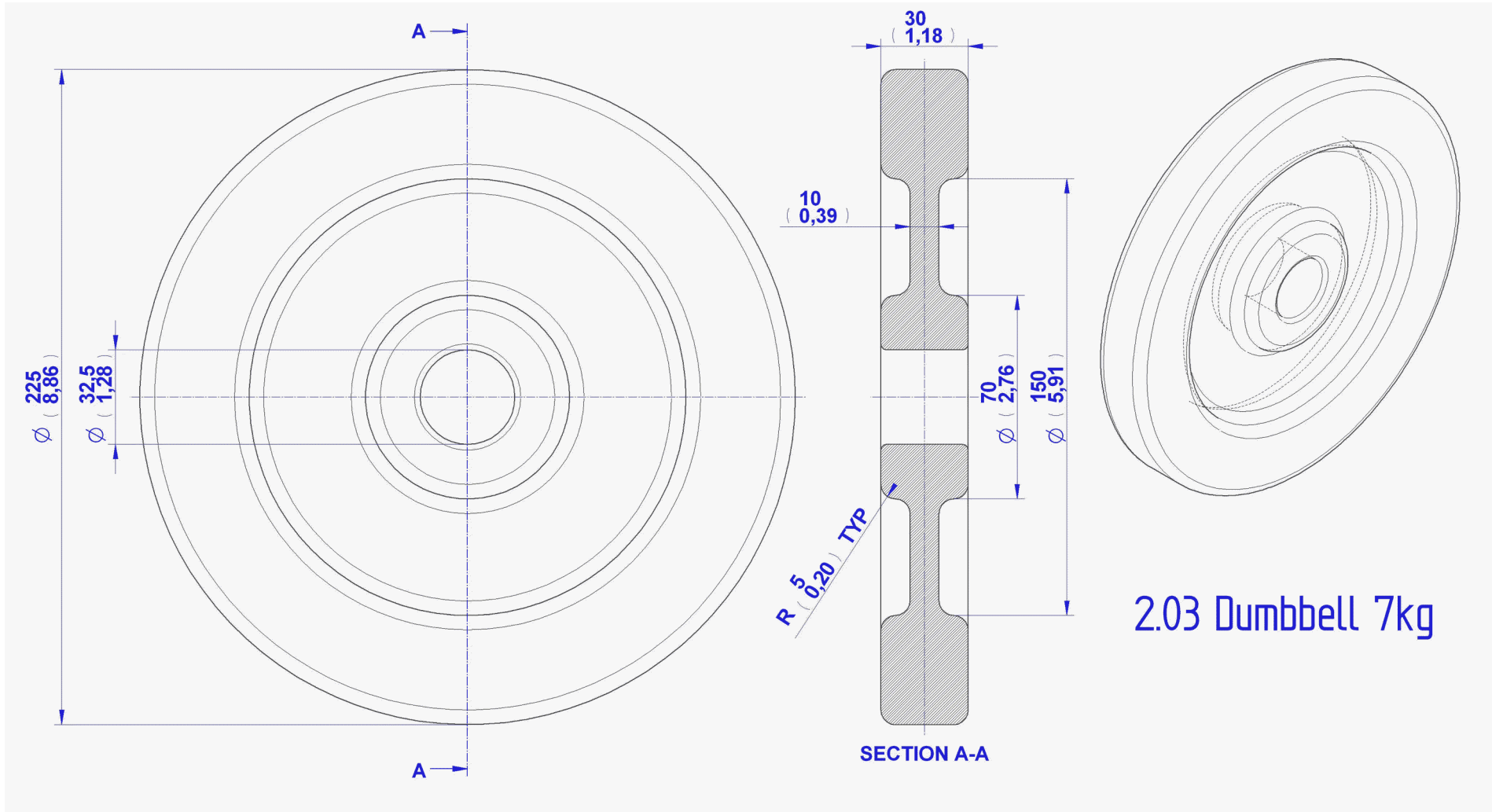
Item Number	Title	Material	Quantity
1	Round Tubing D 31,8 x 6,3mm	Steel	1
2	Delimiter	Steel	2
3	Dumbbell 7kg	Steel	2
4	Dumbbell 5kg	Steel	2
5	Dumbbell Nut	Steel	2
6	Dumbbell 9kg	Steel	2
7	Dumbbell 3kg	Steel	2
8	Dumbbell 1,5kg	Steel	2

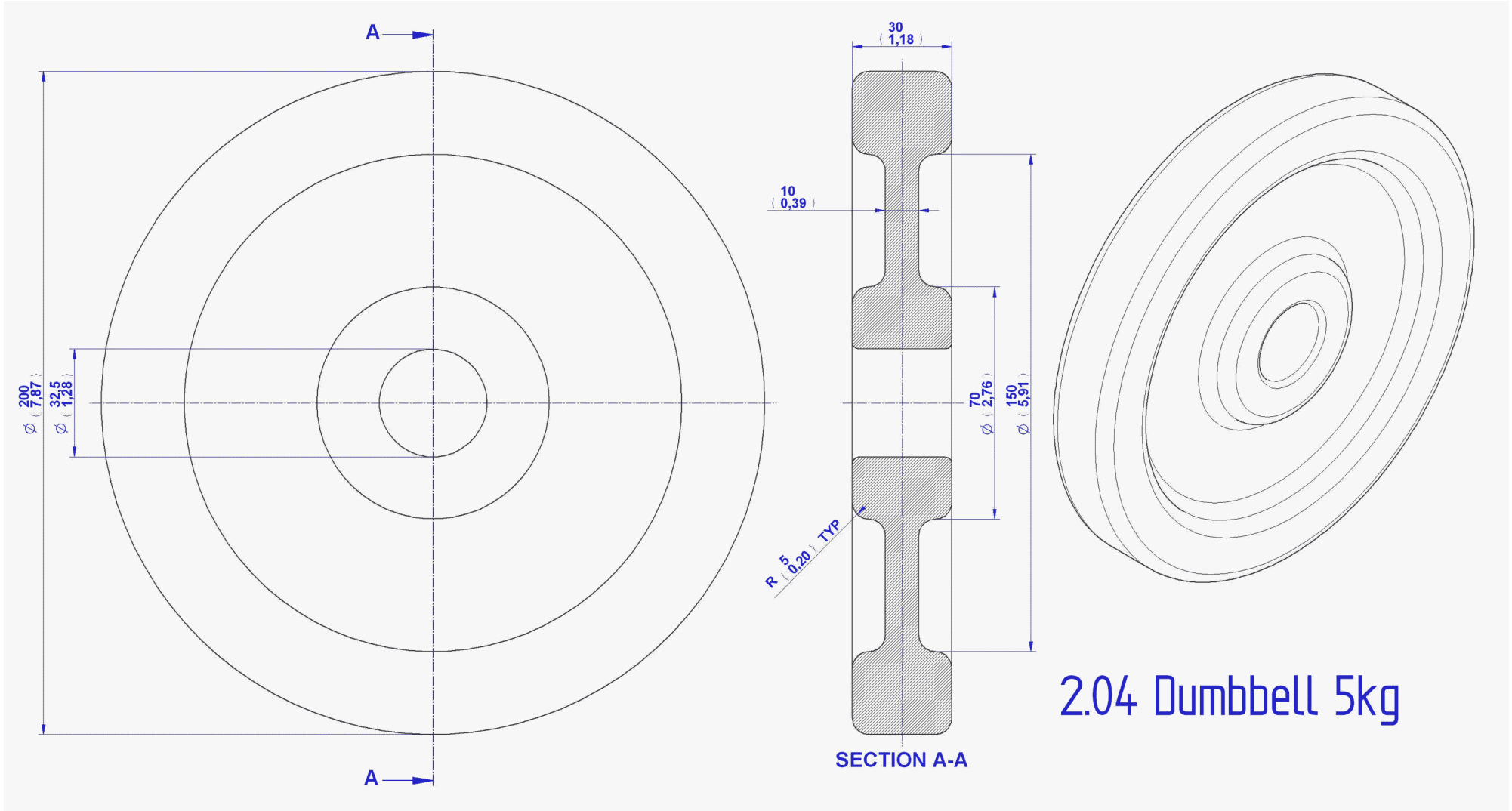


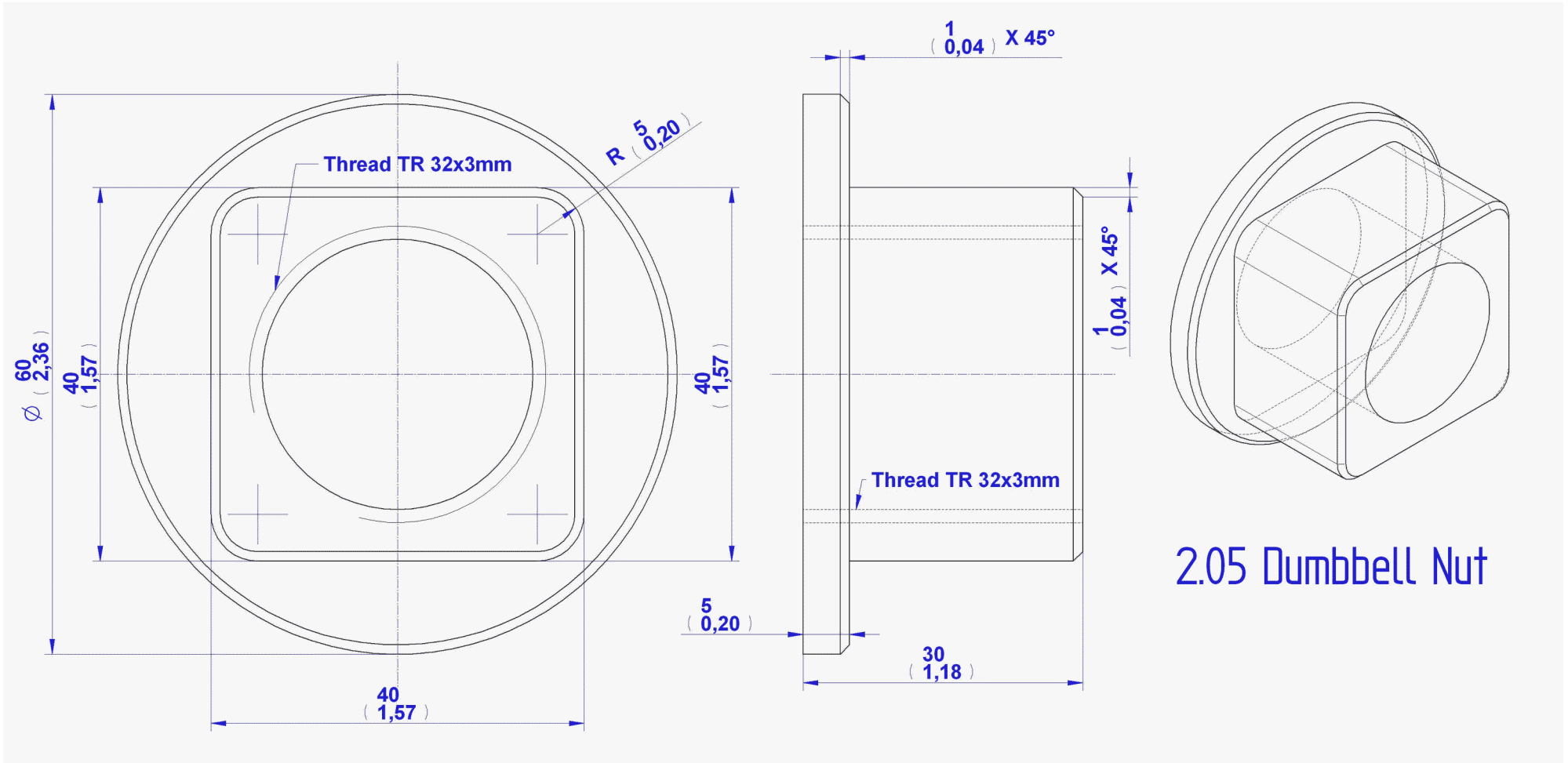


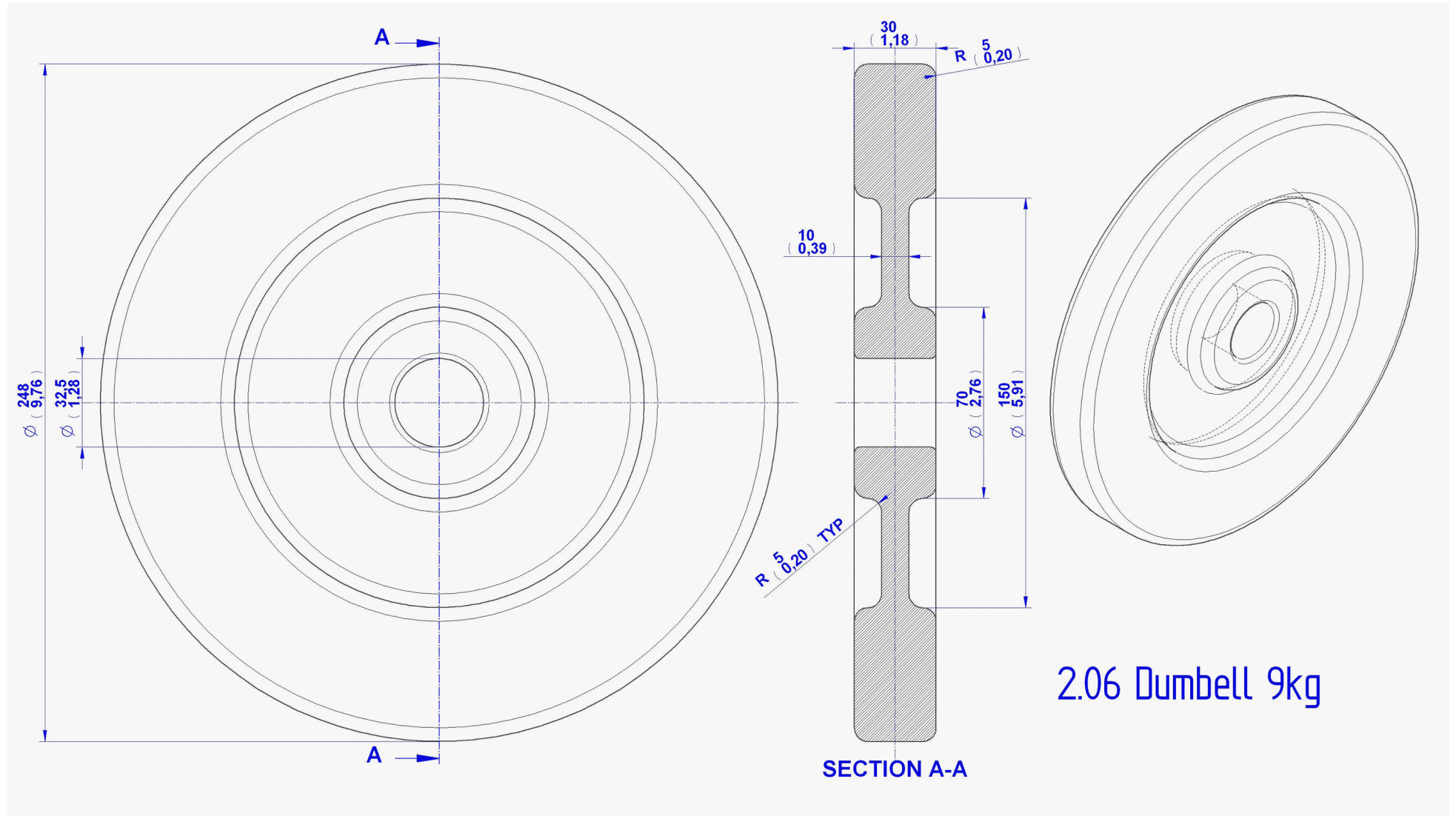


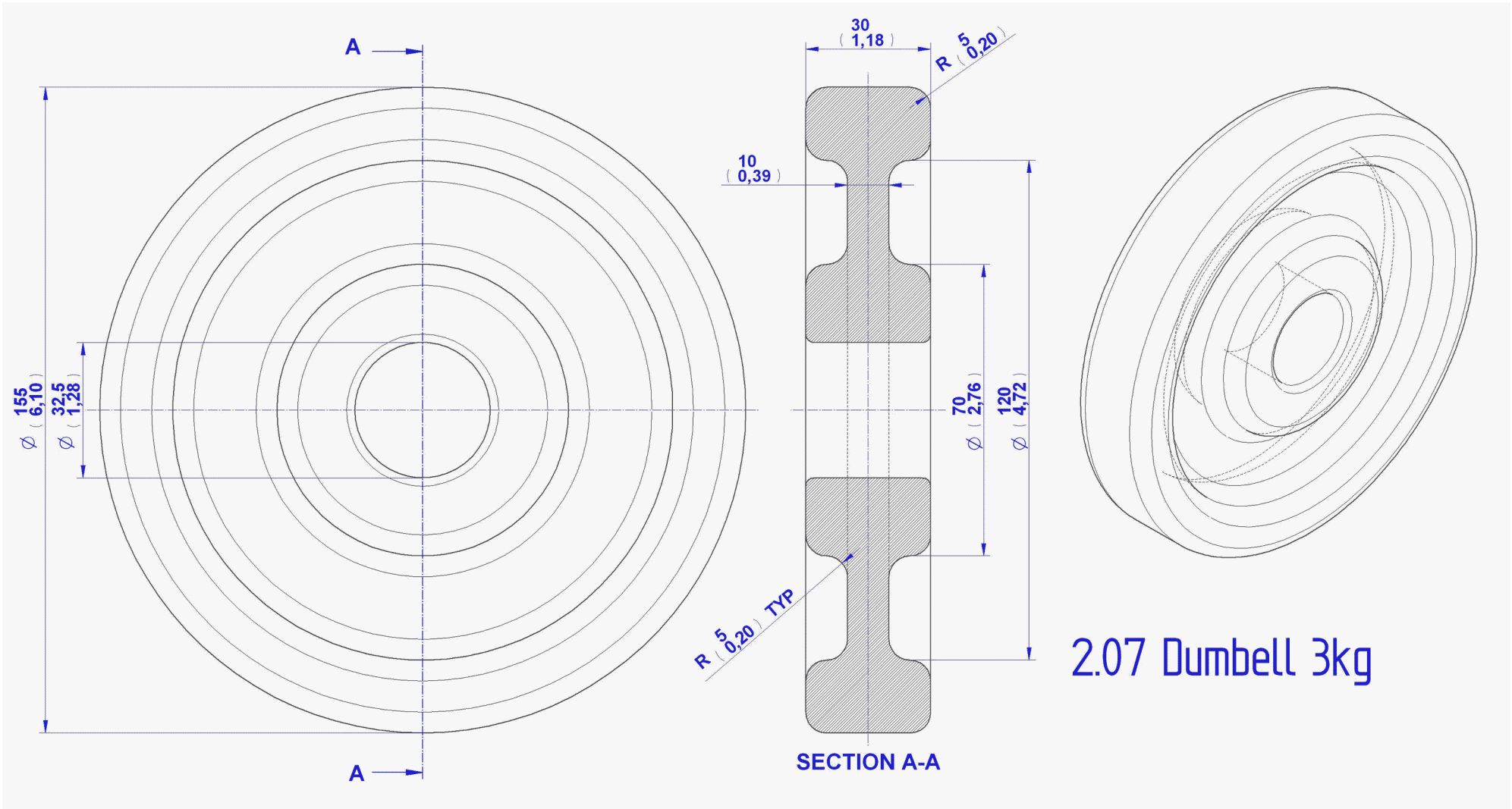


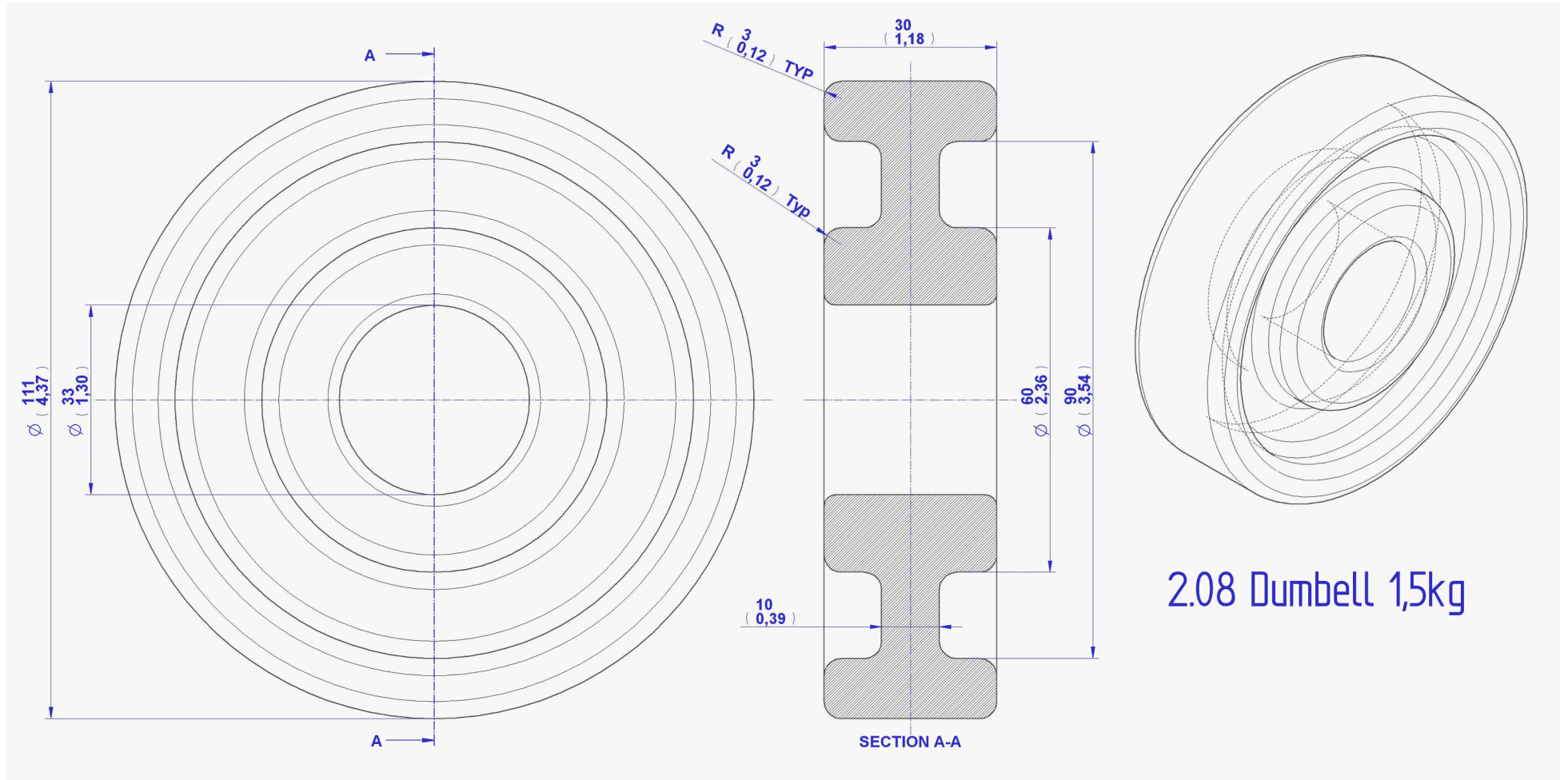








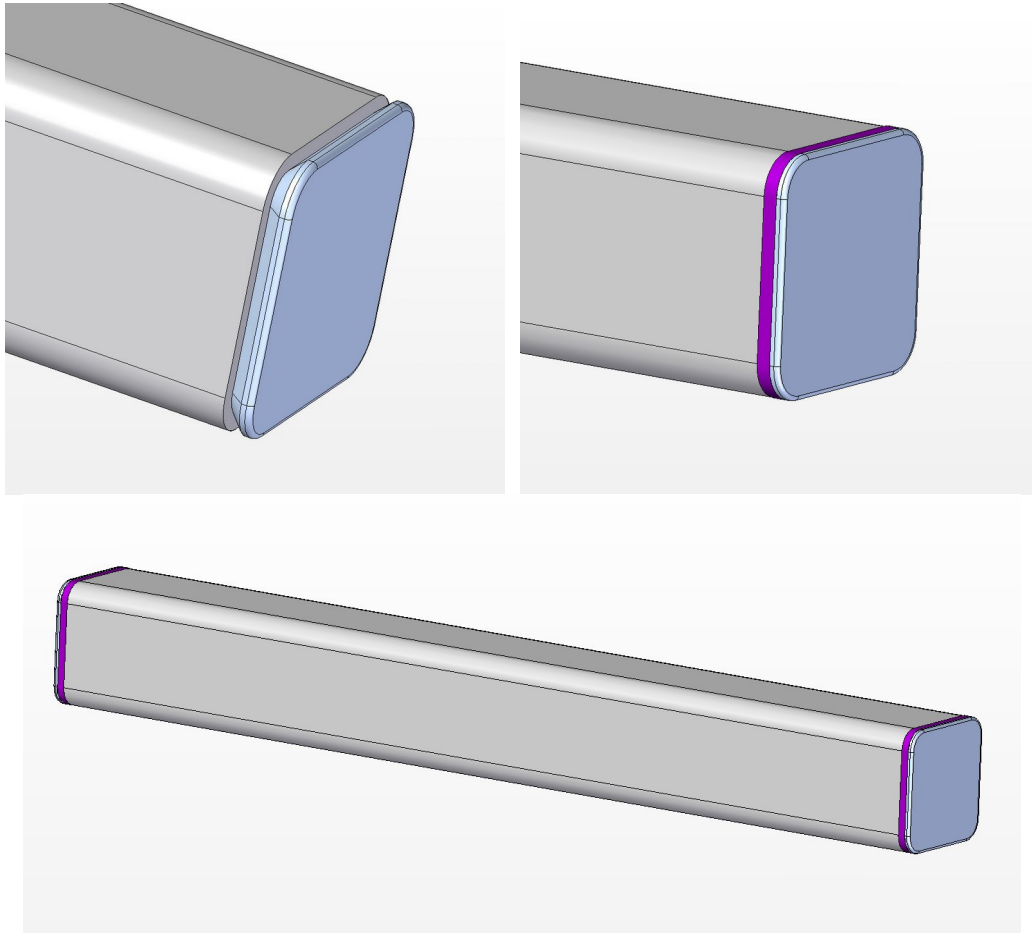




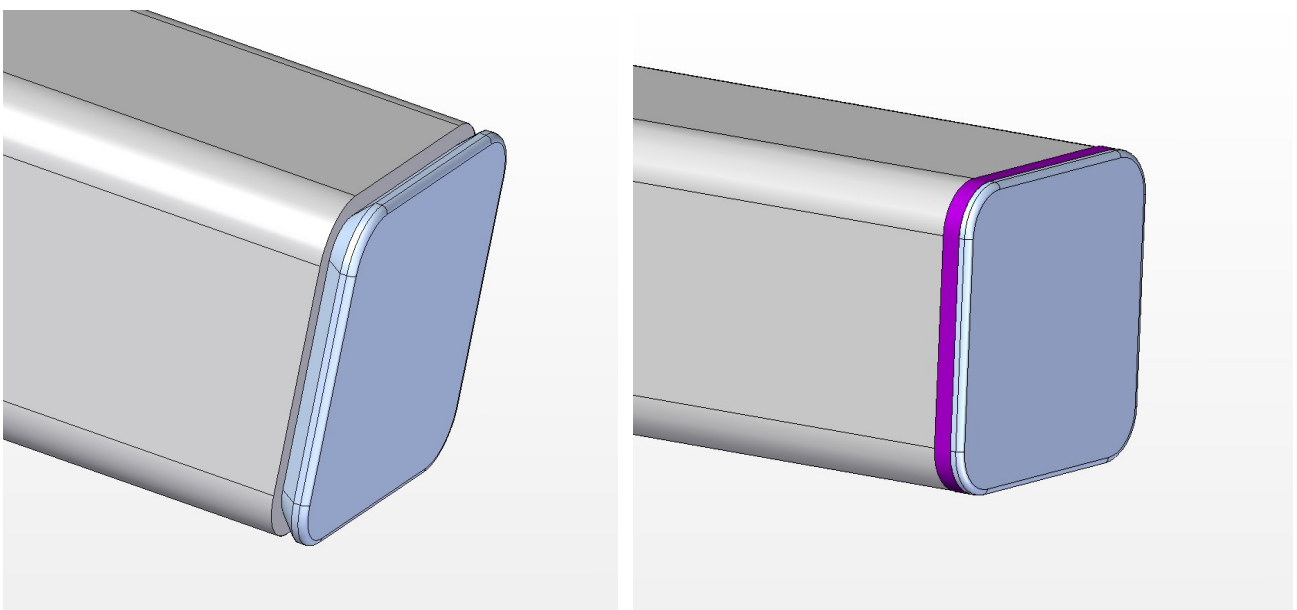
Assemblage images

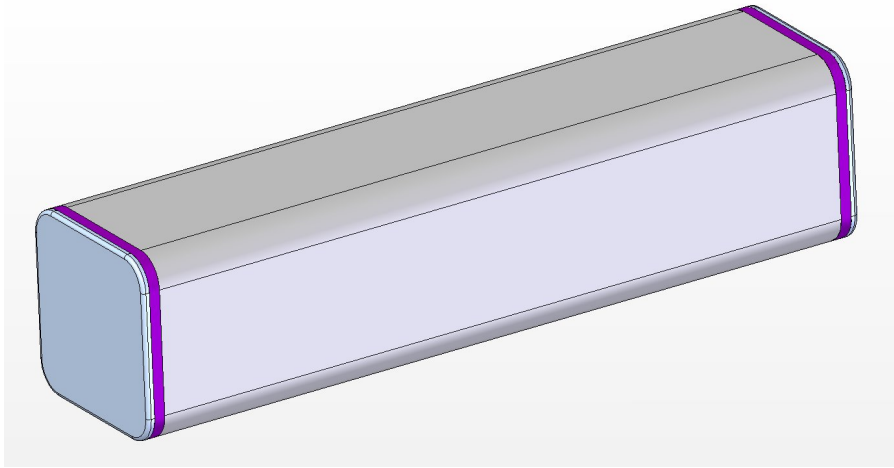
1. Flat Bench Subassembly

1.



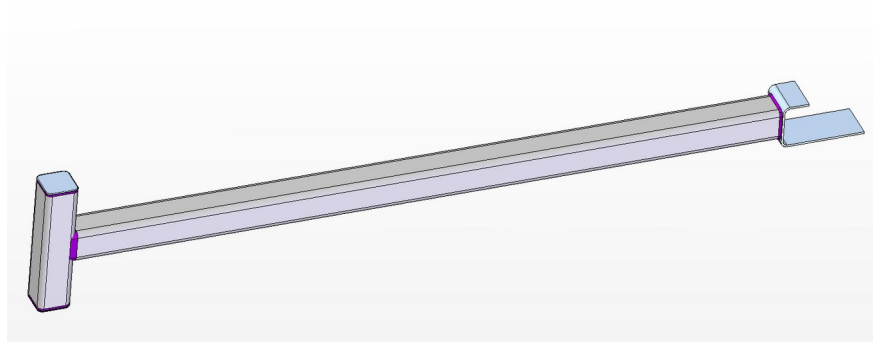
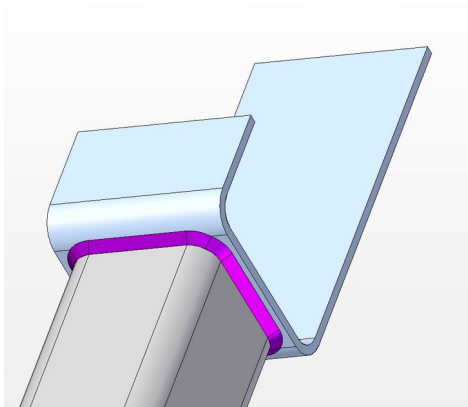
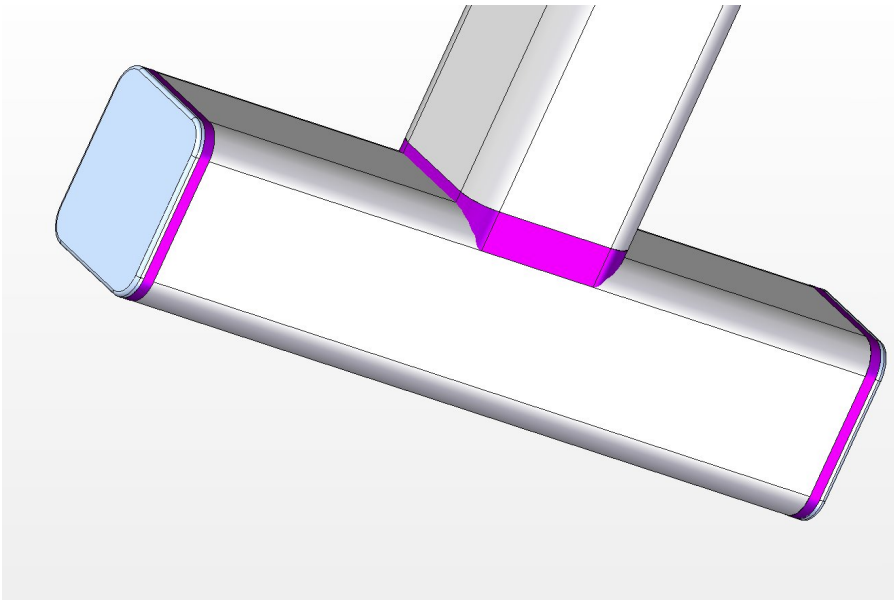
2.





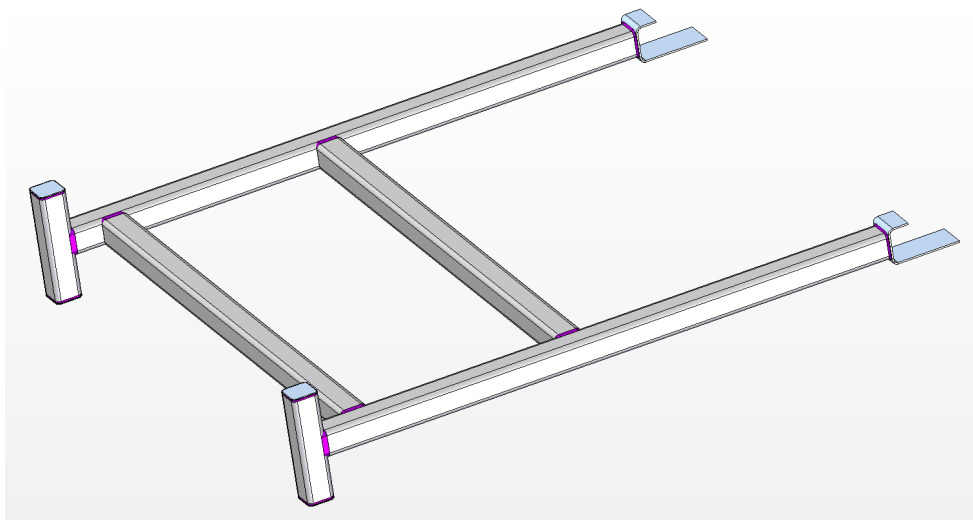
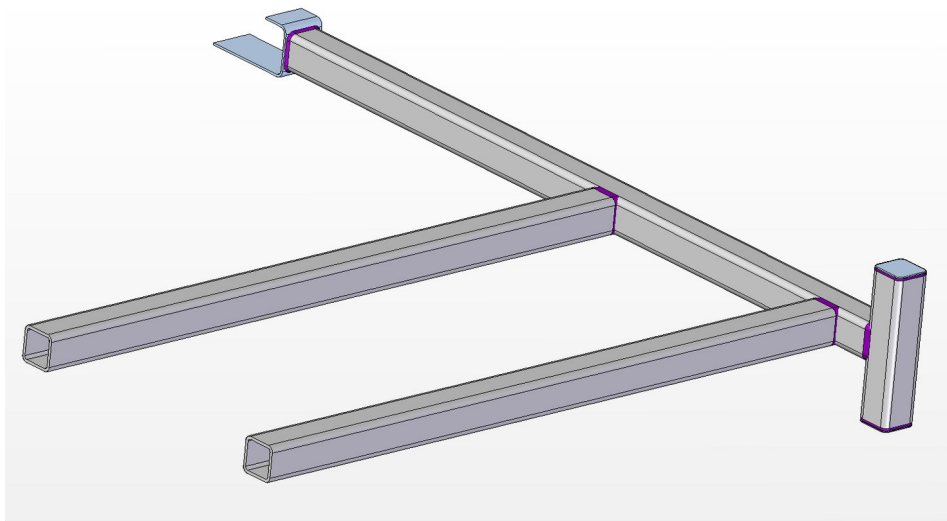
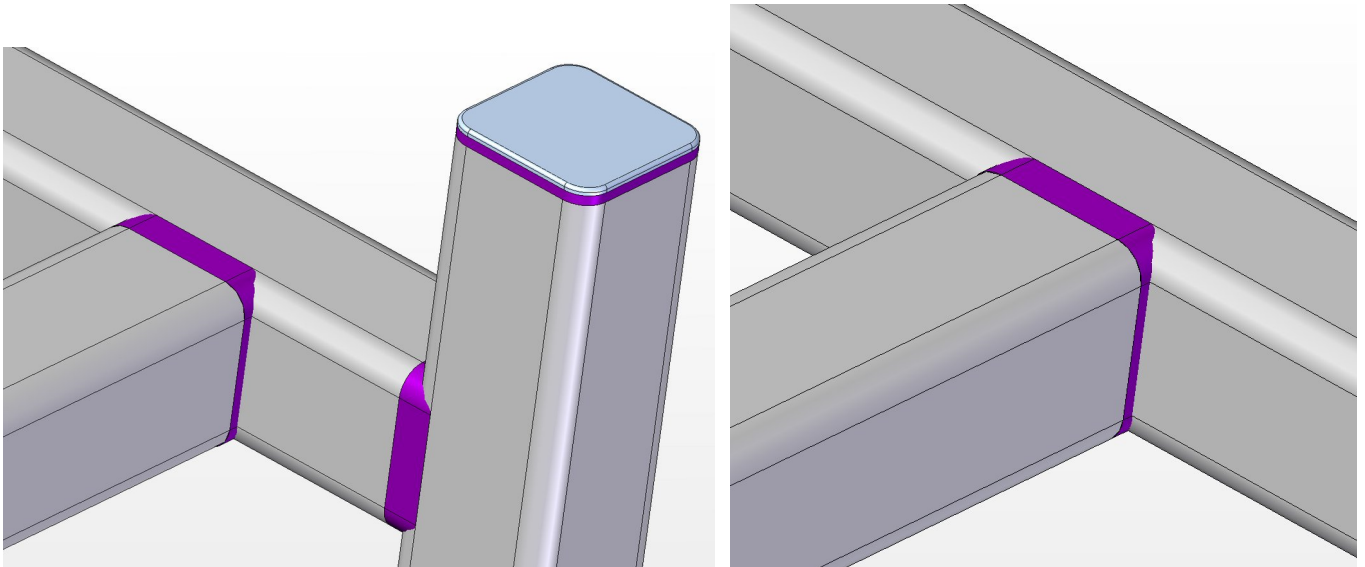
Make the two of these subassemblies

3.

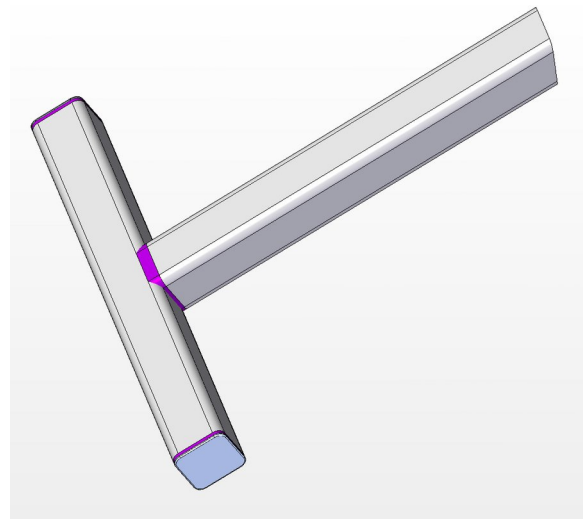
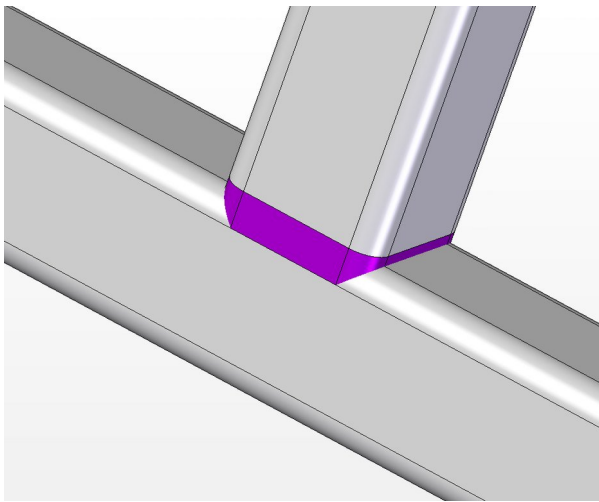


Make the two of these subassemblies

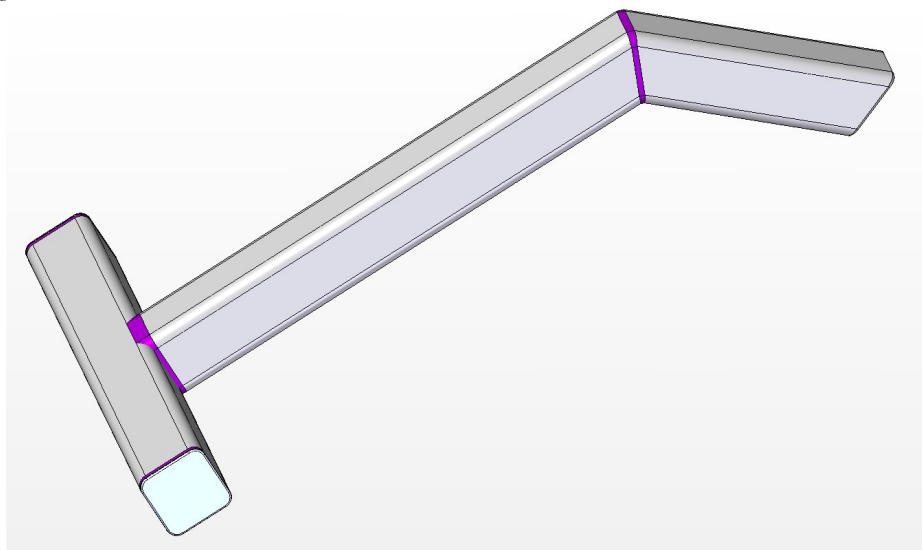
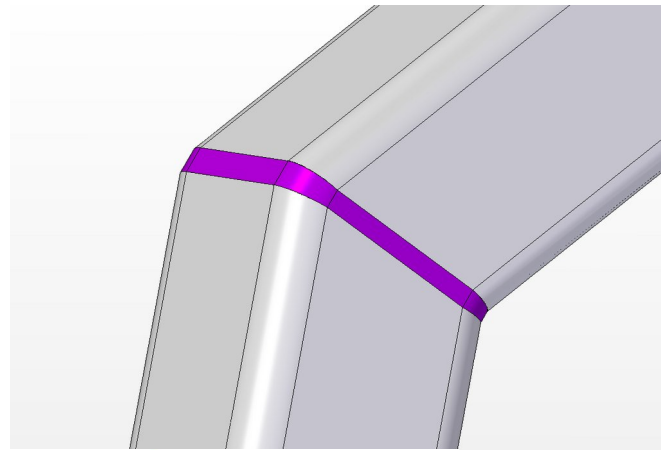
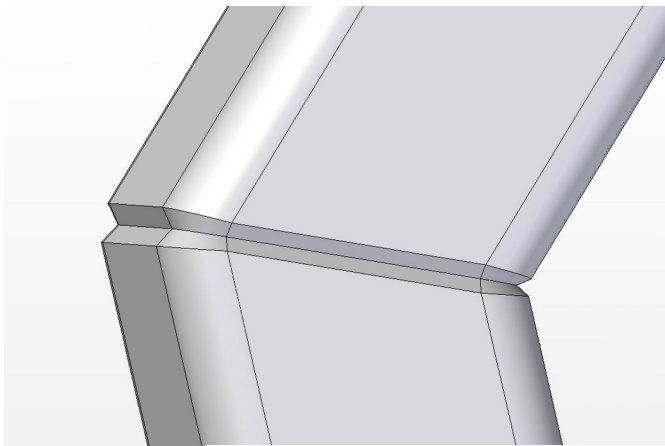
4.



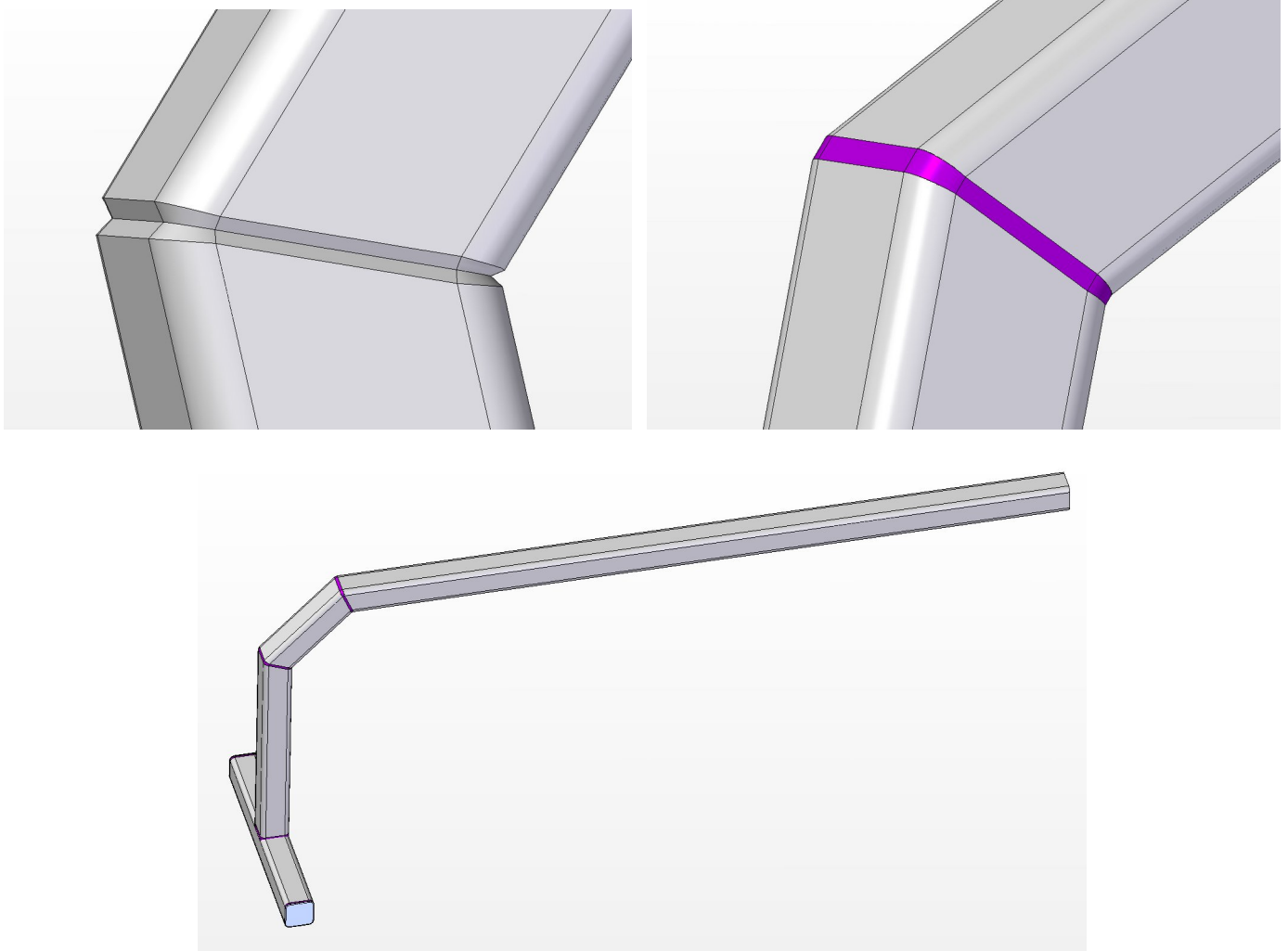
5.



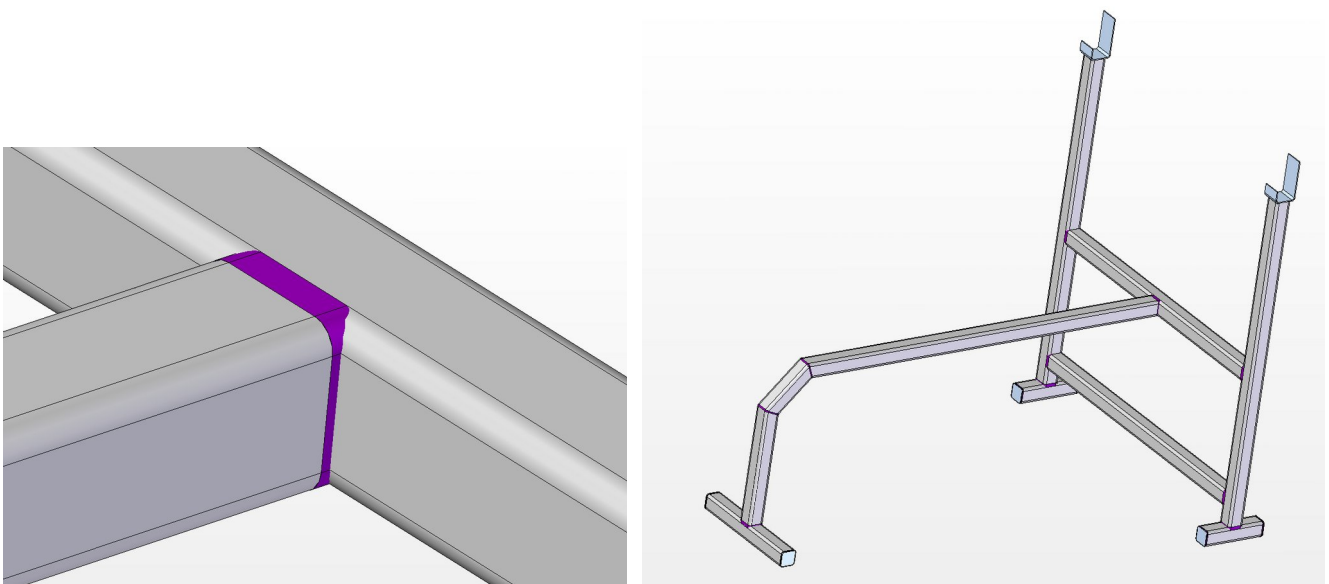
6.



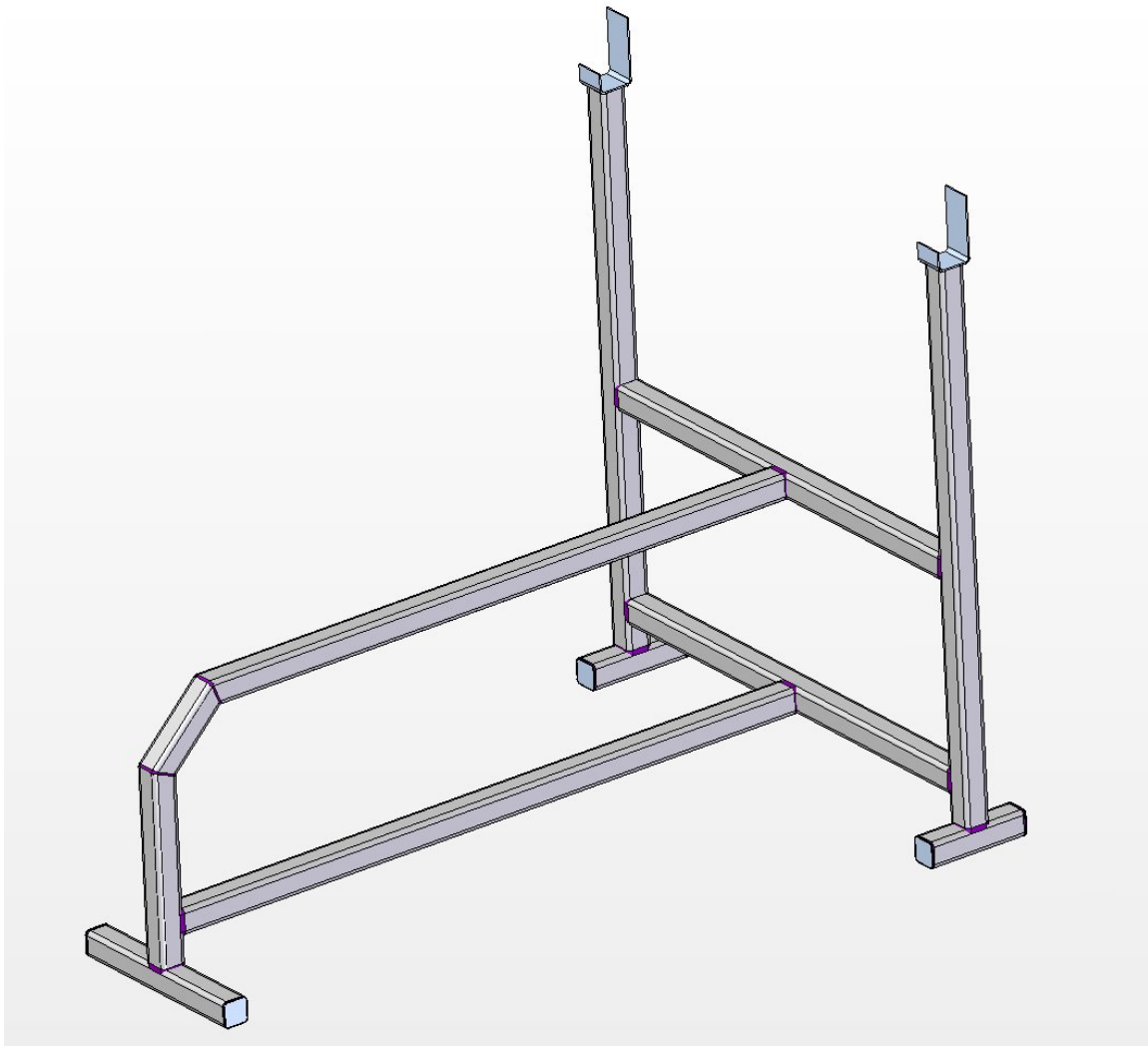
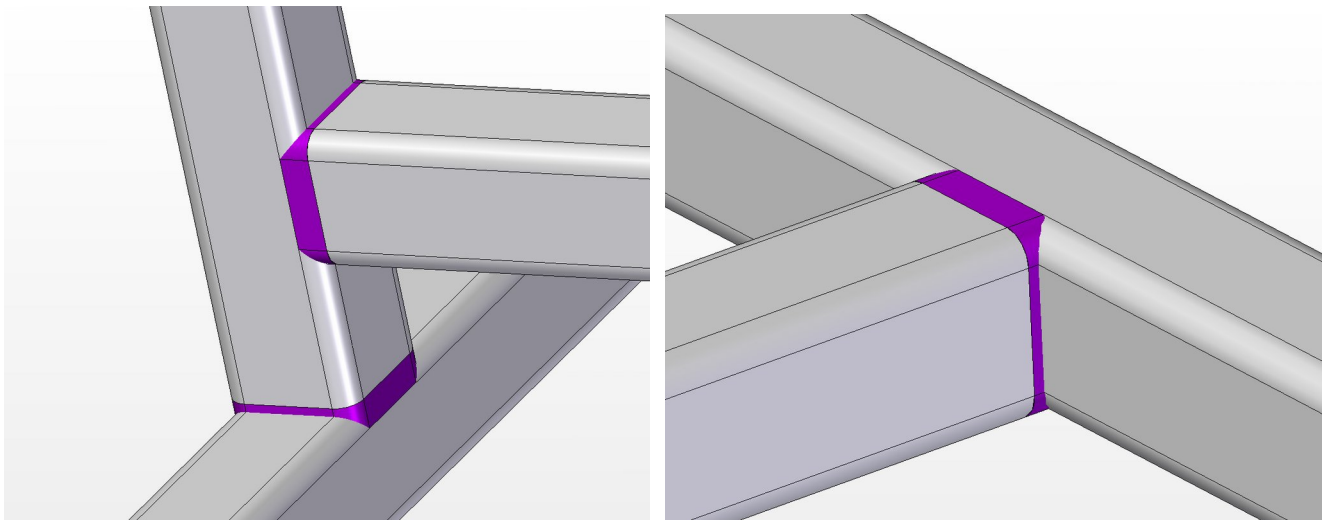
7.



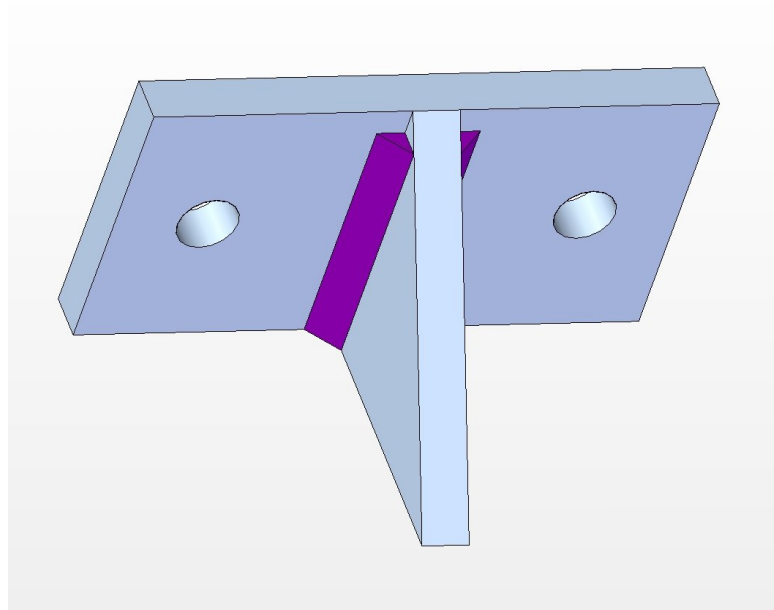
8.



9.

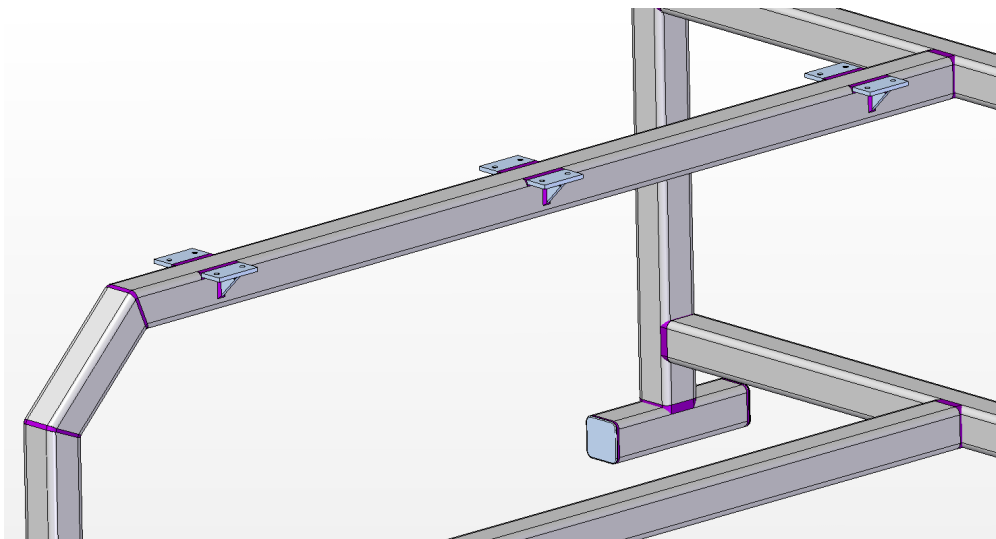
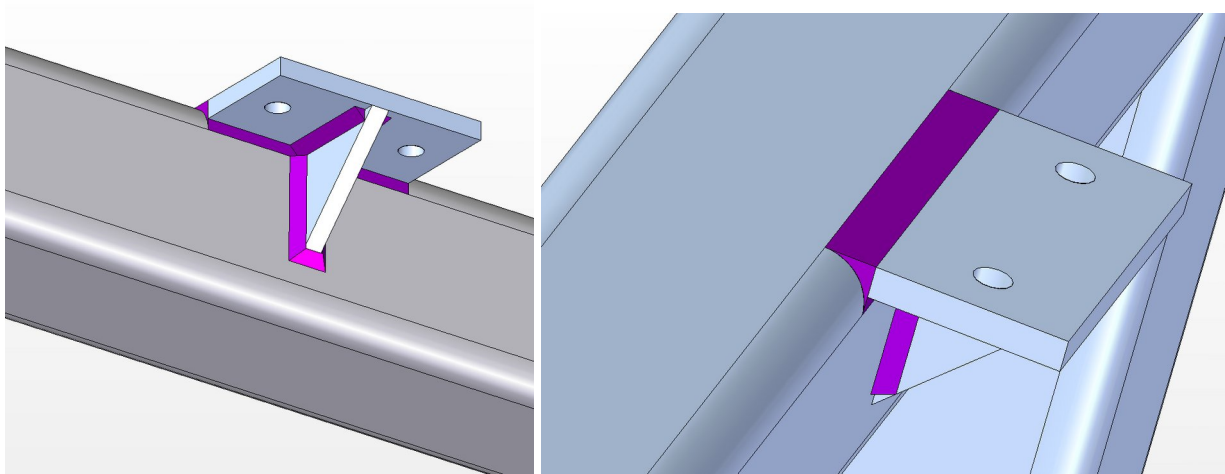


10.



Made six of these subassemblies

11.



12.

