

Wooden perpetual calendar plan

Perpetual calendar consists of movable parts, and the combinations of these parts can display any date of the year. Movable parts usually show date, day and month, but not the year. Therefore, they can be used each year all over again. To show the current date, position of the parts has to be changed every day manually. Perpetual calendars are usually made of wood, because it is easily accessible material and in the same time it is resistant to wear after everyday usage.

You can use wooden perpetual calendar at work in your office, in your home or any other place, where there is a need for calendar and a small place where you could put it.

There are several types of the wooden perpetual calendar, and we are offering you plans for the manufacture of two types. The common thing for these two types of wooden perpetual calendar is that the days and months of the year are written on the wooden blocks, and the blocks are placed on a special wooden base. You can personalize this calendar base by using various techniques to write the name of a company, logo or message, making them ideal business gifts or gifts for your family and friends. Since they can be decorated in various ways, the wooden perpetual calendars draw attention and people love to use them.

Literally any type of wood can be used for the manufacture of wooden perpetual calendar. Because of its small dimensions, it is an ideal opportunity to use scrap wood from the workshop.

Manufacture of the wooden perpetual calendar does not require some special skills, materials or expensive tools. Anyone can make it and the most common tools are used for its manufacture. You will spend more time by painting the calendar base and writing days and months than making individual parts.

After cutting, you need to round the edges and sand down all parts. Go through the grits for perfect smooth surface. These wooden perpetual calendars can be finished with stain, varnish, wax, shellac or paint, according to the wood used and the finish on the furniture with which they will be used.



1. Cut the Calendar base parts: Back (part 1), Bottom (part 2) and the Sides (part 3); sand down each piece going through the grits to achieve smooth surface. Glue the parts to form the calendar base. We used the decorative Box woodworking joints. Another option is using the butt joints. On the Back (part 1) you can cut the pattern as you wish- we used the pattern of the sun.

2. Cut three Months cuboids parts (Parts 4, 5 and 6), sand them down to make them smooth and write down months, by painting, marquetry, chip carving or some similar technique. These three pieces will be turned around to show the months of the year.

3. Cut two Days cube parts (parts 7 and 8), sand them down to make them smooth and write numbers which serve to display the numbers that you can arrange for the date. One cube should have numbers: 1, 2, 3, 4, 5 and 0 painted each on one side of the cube. The second cube should have numbers: 1, 2, 6, 7, 8 and 0. Number 6 on this cube will serve also as 9 when needed. Such way of number arrangement on cubes allows displaying any date only by rotating the cubes and switching their position.

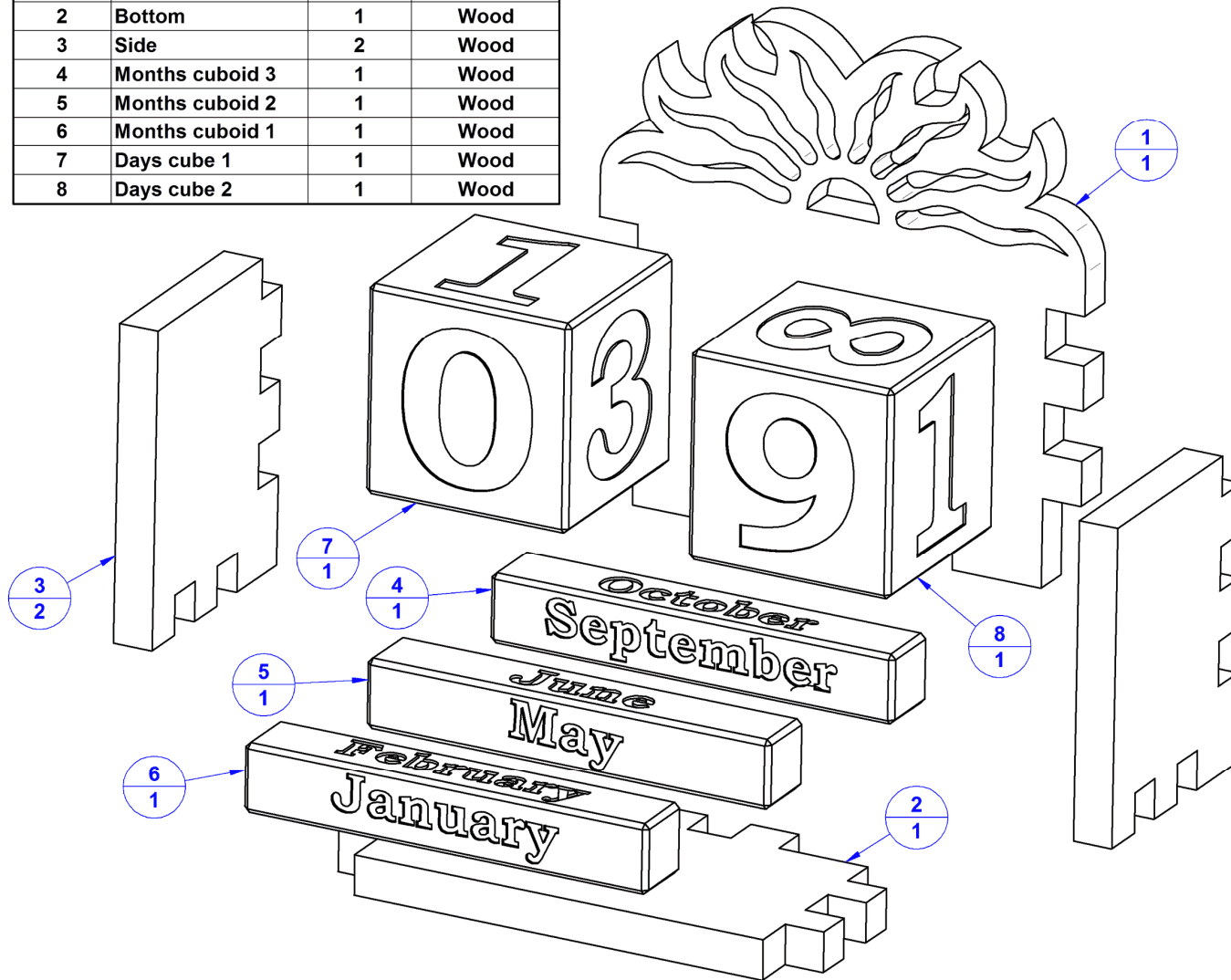
Finishing: Choose how you would like to finish your calendar. You can apply paint, stain, varnish or even nothing at all.

Put the calendar together by placing the month cuboids on the bottom of the calendar base, one in front another with the current month showing in front. Then top it off with numbered blocks, placing the numbers of the current date in front.

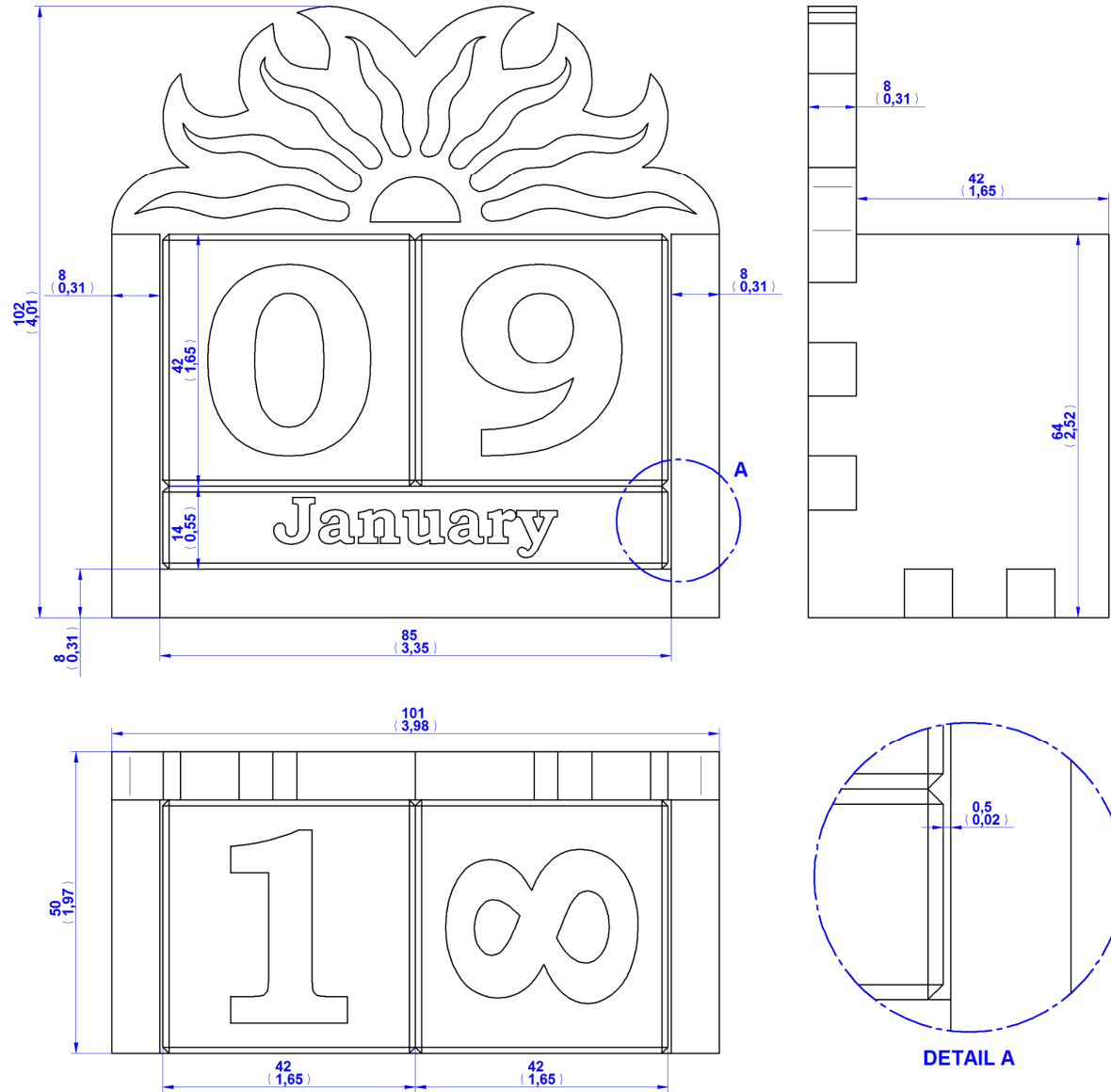
This project is suitable for beginners as well as for woodworking practice for kids. Older children can make whole project independently, while younger kids can paint the parts manufactured by somebody else. If you have not got possibilities to make the parts by yourself, you can purchase blank wooden perpetual calendar and afford children to paint and decorate the calendar.

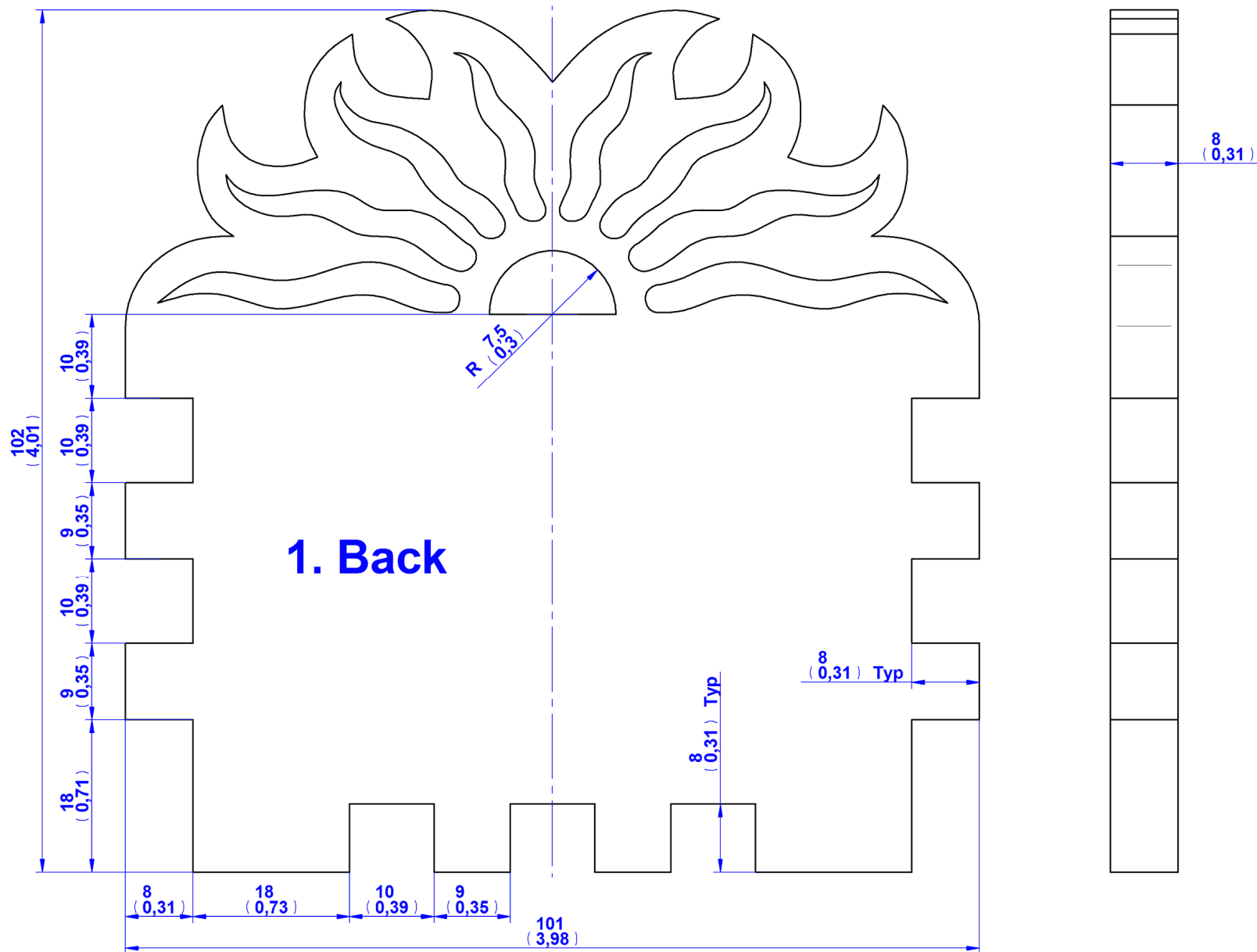
Wooden perpetual calendar plan – Parts list

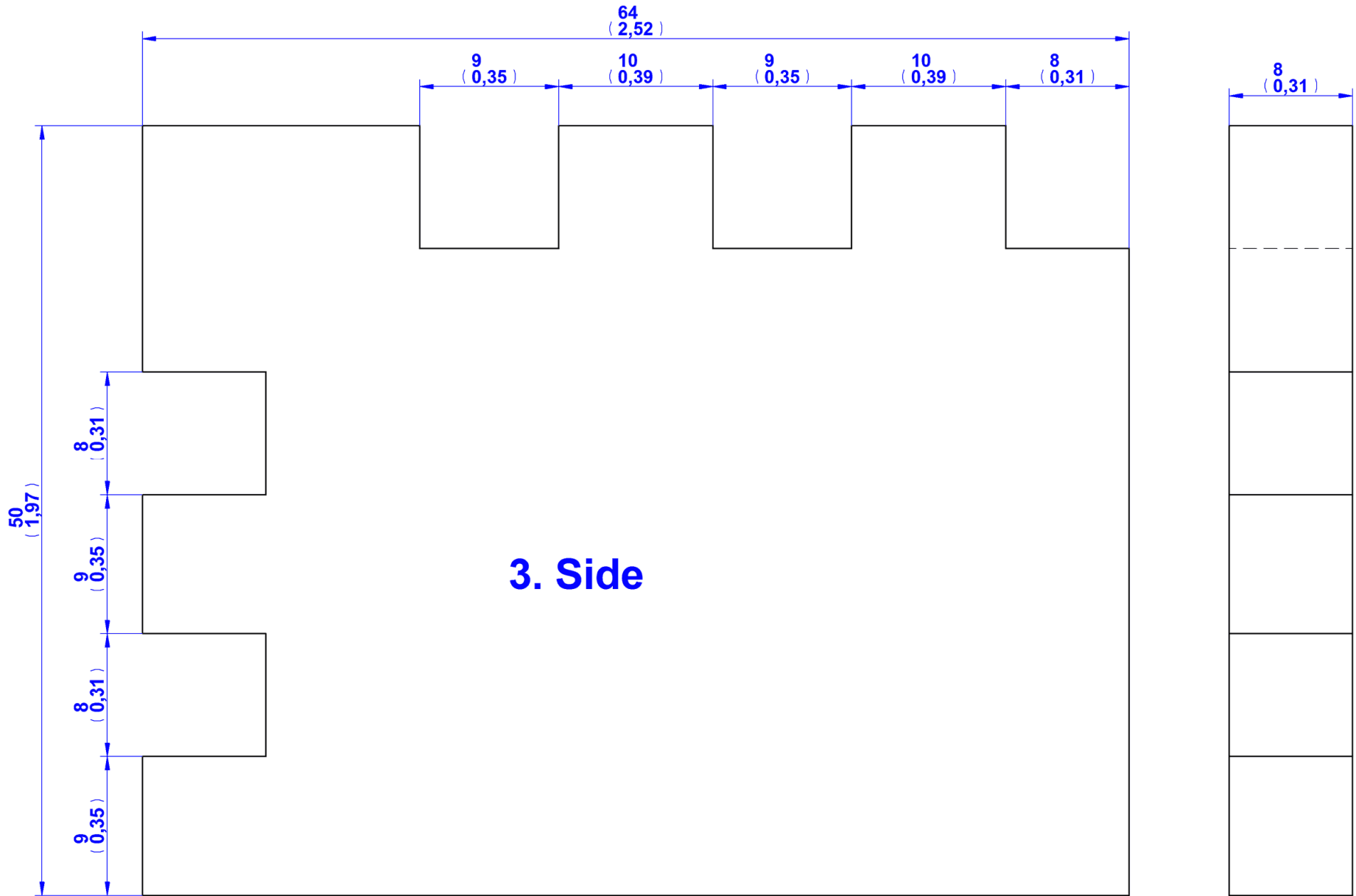
Item Number	Title	Quantity	Material
1	Back	1	Wood
2	Bottom	1	Wood
3	Side	2	Wood
4	Months cuboid 3	1	Wood
5	Months cuboid 2	1	Wood
6	Months cuboid 1	1	Wood
7	Days cube 1	1	Wood
8	Days cube 2	1	Wood

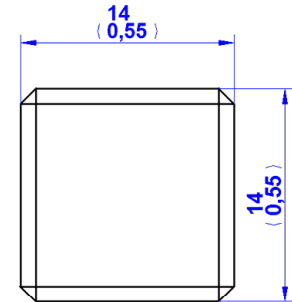
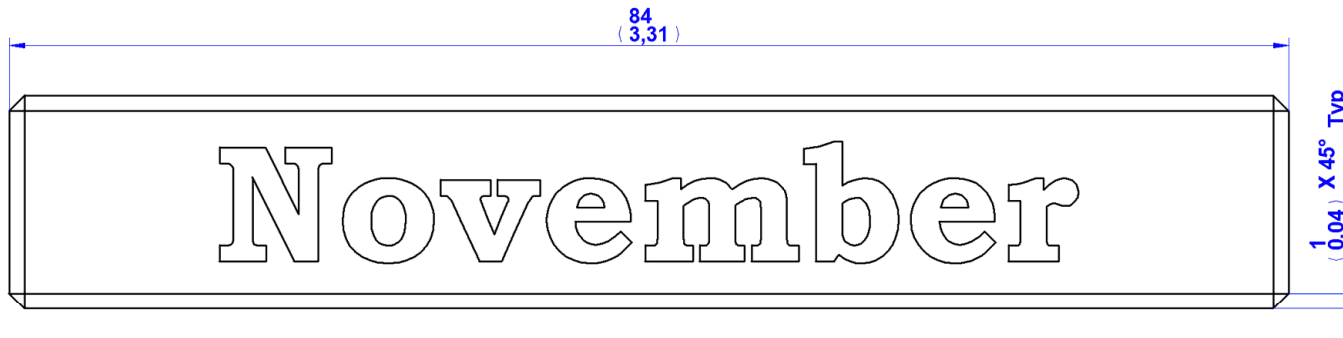


Wooden perpetual calendar plan – Assembly 2D drawing

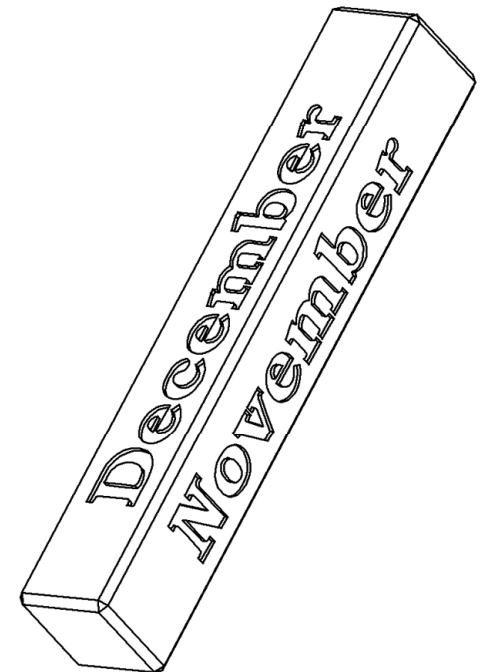
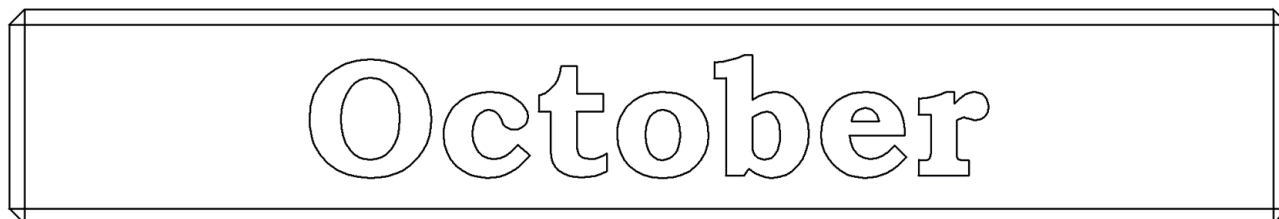
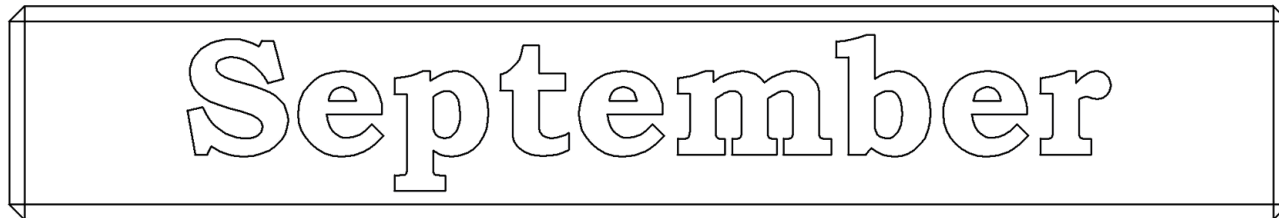
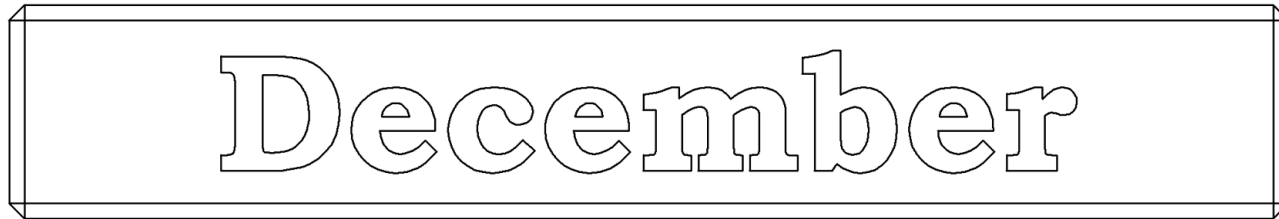


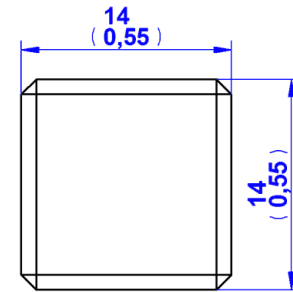
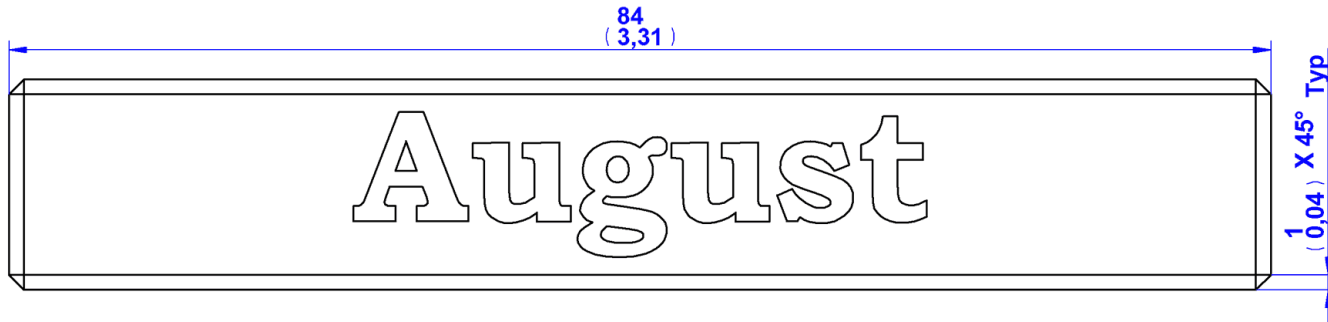




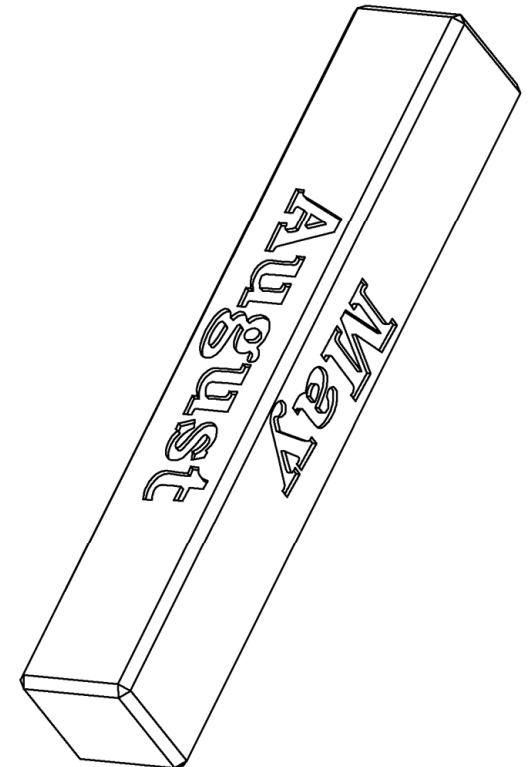
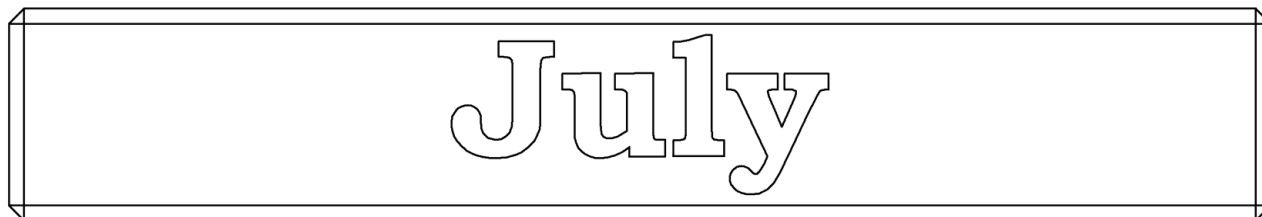
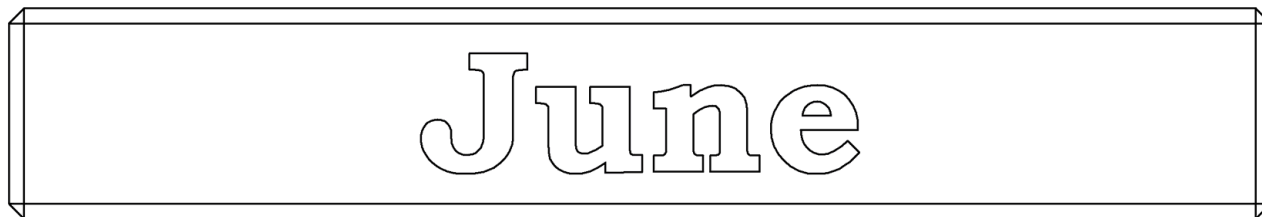


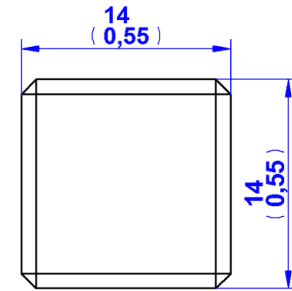
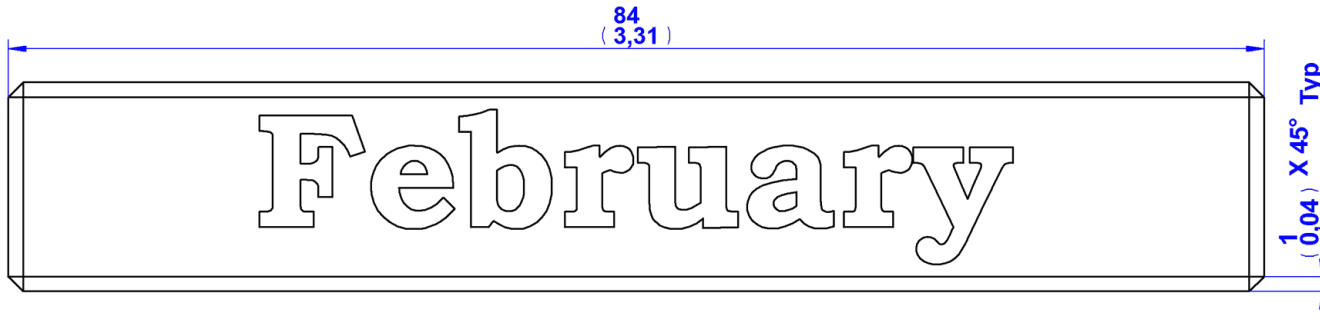
4. Months cuboid 3



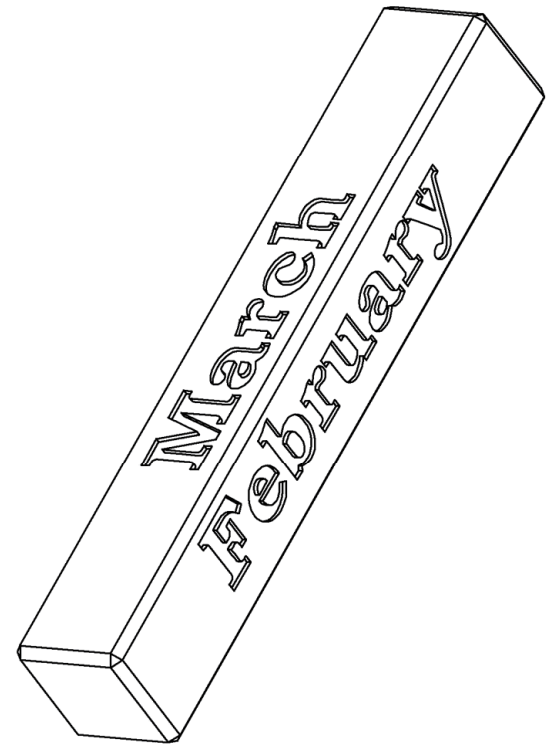
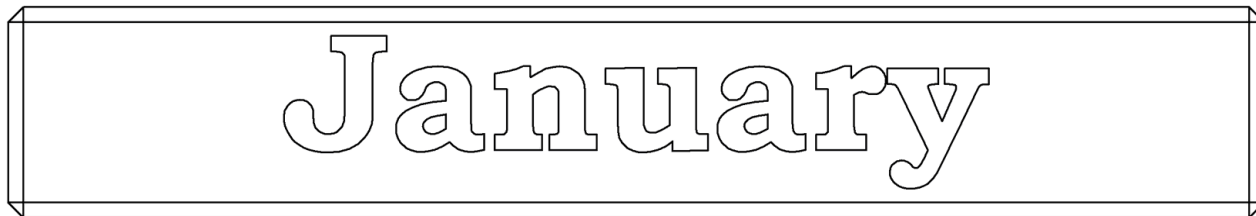
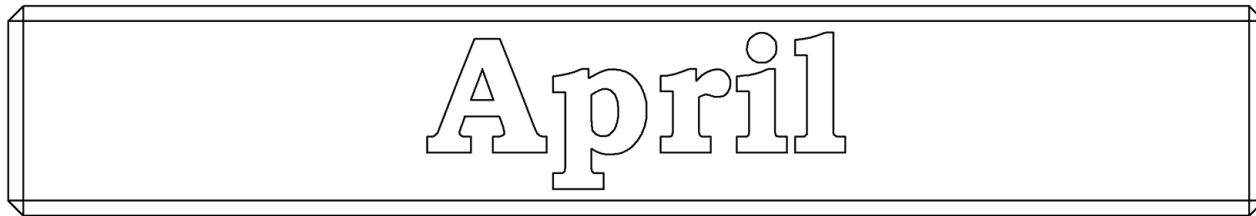


5. Months cuboid 2

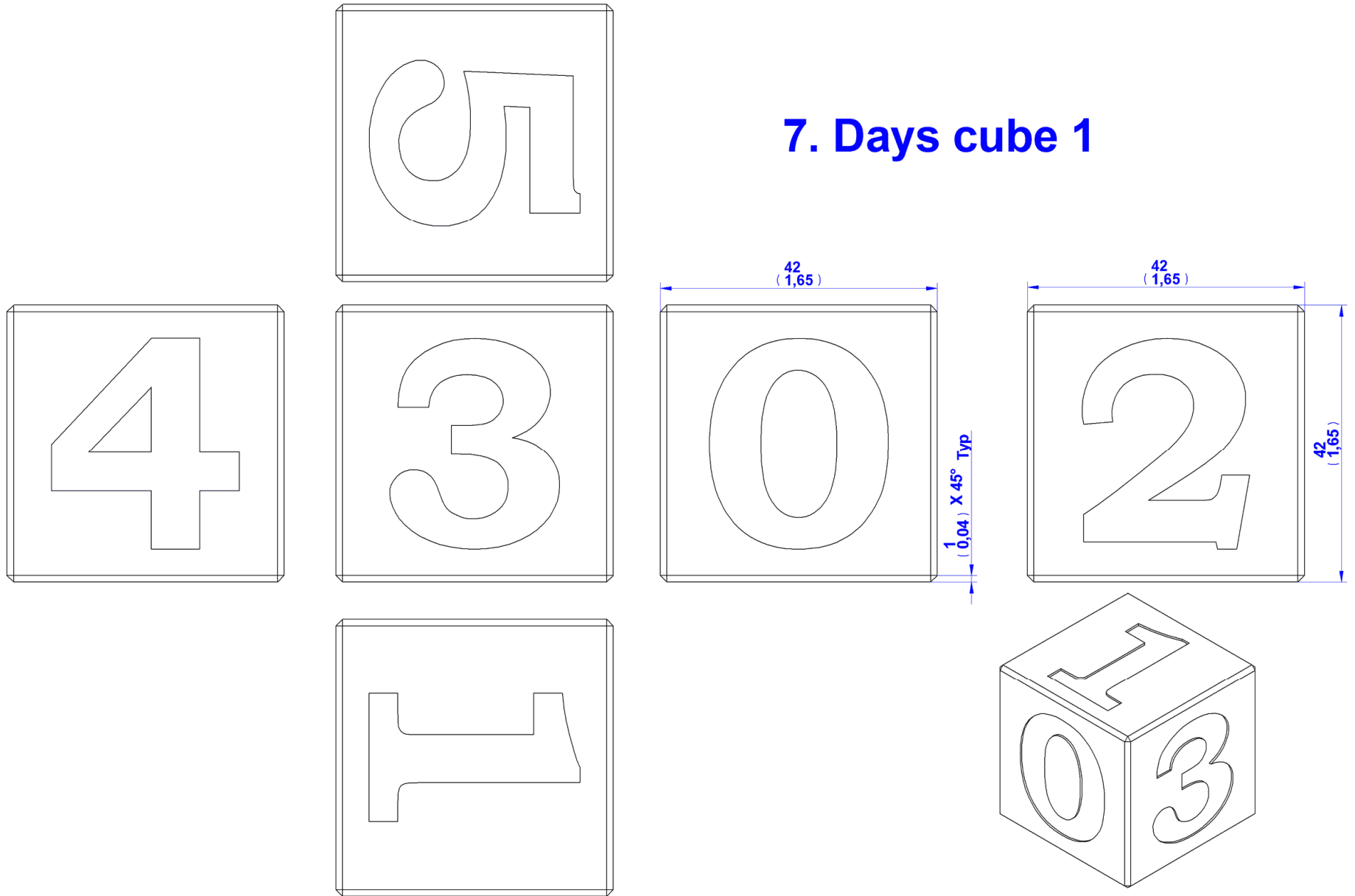




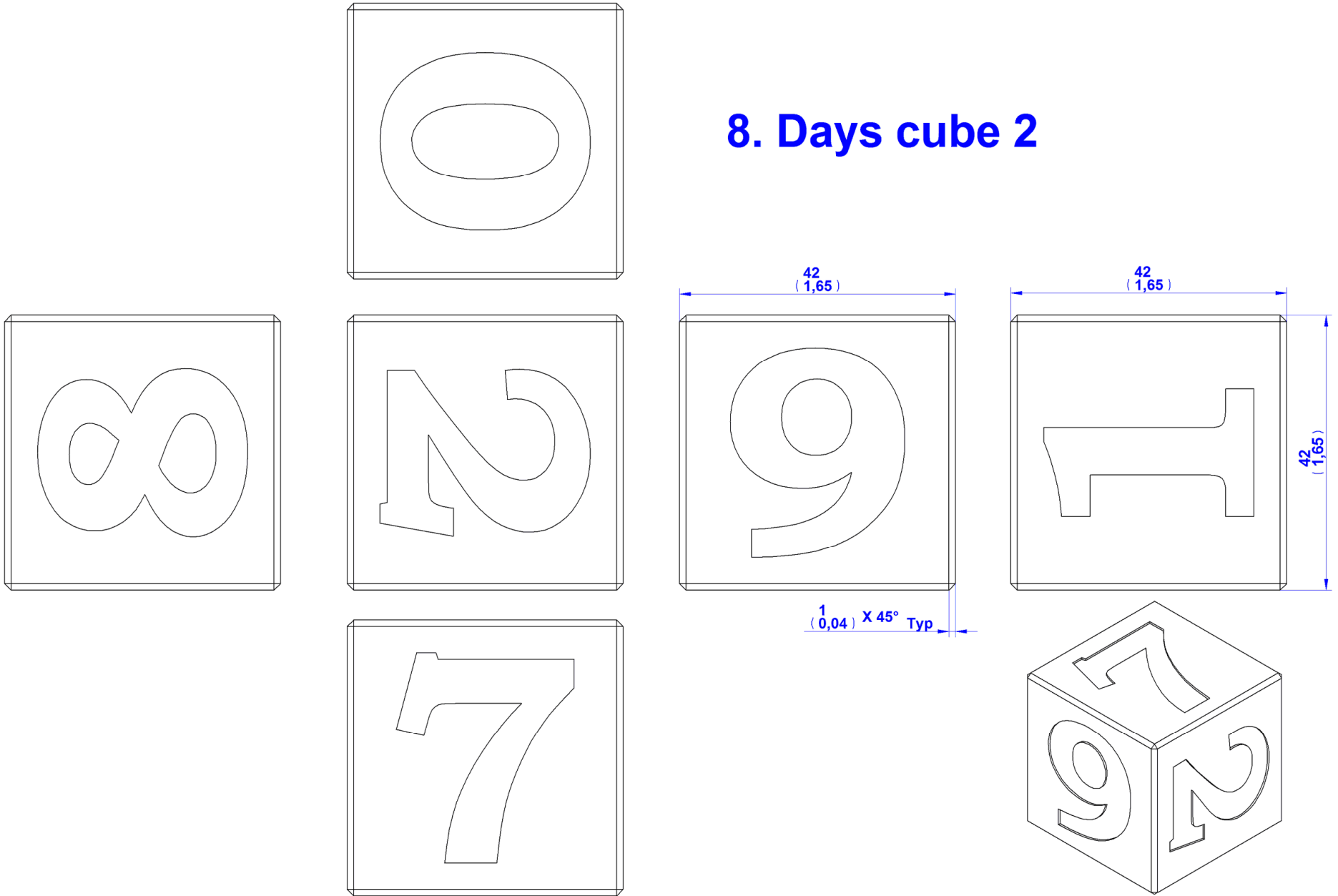
6. Months cuboid 1



7. Days cube 1

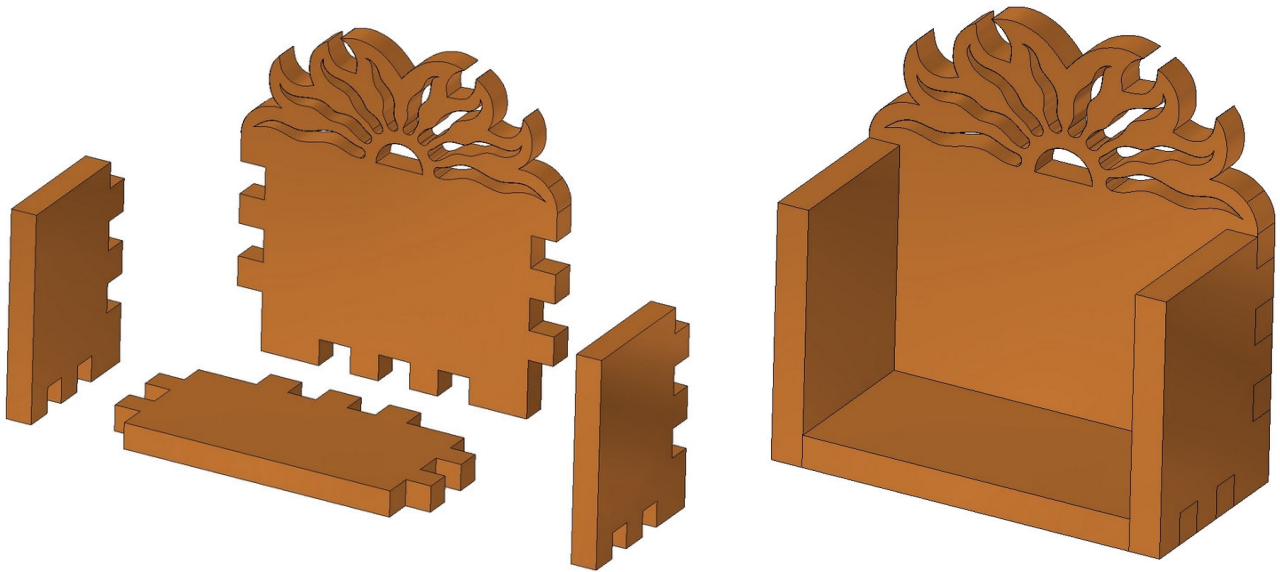


8. Days cube 2



Assemblage instructions

Join the Back (part 1), Bottom (part 2) and the Sides (part 3) together with glue.



Paint it, or cover with lacquer, after glue is dry. If you wish to give it as a present, you can add a family name, or a company name on the frame side.

Cut and sand three pieces of cuboids. These pieces will display the months of the year in your calendar.

Each cuboid will have four months on it. You should paint or write months January, February, March and April on the first one, May through August on the second, September, October, November and December on the last cuboid.

Cut two cubes. These cubes will display the date numbers of the month.

One cube should have numbers: 1, 2, 3, 4, 5 and 0 painted each on one side of the cube.

The second cube should have numbers: 1, 2, 6, 7, 8 and 0. Number 6 on this cube will serve also as 9 when needed.

When the numbers and month are in question, you can choose to simply draw or paint them, but the real vintage feel they will get, if you use the marquetry technique, carving technique or even a woodburning technique. Choice is up to you.

Now, put the months cuboids on the bottom of the frame, with current month in front, and choose the numbers on cubes with exact date, place them on top of months cuboids and enjoy. Of course, do not forget to flip cubes tomorrow, and each following day, so this beautiful perpetual calendar serves right its purpose.

